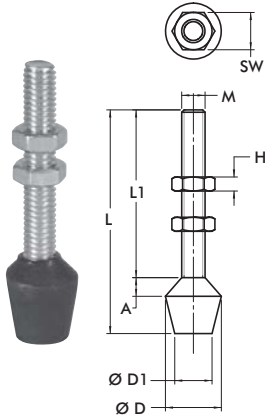




Spindeln

Andruckspindel Inch

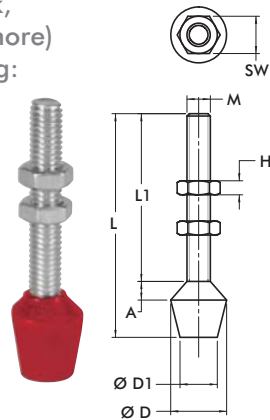
- Schwarzes, vulkanisiertes Neopren - Druckstück, labsfrei (Härte 70-80 Shore)
- Temperaturbeständig: -20°C bis 100°C [-22°F bis 212°F]
- Ölresistent, labs- (Silicon) frei
- Inkl. 2 Befestigungsmuttern



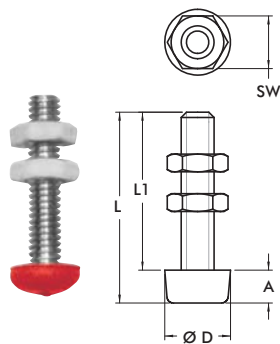
Art.Nr.	M	L	L1	SW	H	A	ØD	ØD1
▲ 102208	#8-32	[1.25] 31,8	[0.94] 23,8	[0.34]	[0.13] 3,2	[0.06] 1,6	[0.56] 14,3	[0.44] 11,1
▲ 105208		[1.00] 25,4	[0.69] 17,4	[0.38] 9,5		[0.13] 3,2	[0.56] 14,3	[0.44] 11,1
▲ 201208	#10-32	[1.38] 35,1	[1.01] 25,5	[0.38] 9,5	[0.16] 4	[0.12] 3	[0.63] 16	[0.47] 12
▲ 202208		[1.63] 41,4	[1.08] 27,4	[0.38] 9,5		[0.12] 3	[0.63] 16	[0.47] 12
▲ 215208	1/4-20	2.13 54,1	[1.58] 40,1	[0.44] 11,1	[0.16] 4	[0.13] 3,3	[0.66] 16,8	[0.50] 12,7
▲ 424208		[1.50] 38,1	[1.12] 28,5	[0.38] 9,5		[0.13] 3,3	[0.66] 16,8	[0.50] 12,7
▲ 431208	5/16-18	[1.00] 25,4	[0.62] 15,8	[0.50] 12,7	[0.19] 4,8	[0.20] 5	[0.83] 21	[0.55] 14
▲ 225208		[2.25] 57,2	[1.54] 39,1	[0.50] 12,7		[0.19] 4,8	[0.83] 21	[0.55] 14
▲ 507208	3/8-16	[3.00] 76,2	[2.29] 58,2	[0.56] 14,3	[0.22] 5,6	[0.20] 5	[1.02] 26	[0.79] 20
▲ 240208		[3.25] 82,6	[2.31] 58,5	[0.56] 14,3		[0.22] 5,6	[1.02] 26	[0.79] 20
▲ 527208	1/2-13	[3.50] 88,9	[2.50] 63,5	[0.75] 19,1	[0.31] 7,9	[0.28] 7	[1.02] 26	[0.79] 20
▲ 235208		[5.75] 146,1	[4.77] 121,1	[0.75] 19,1		[0.31] 7,9	[1.02] 26	[0.79] 20
▲ 247208	5/8-11	[3.87] 98,3	[2.73] 69,3	[0.94] 23,8	[0.38] 9,5	[0.28] 7	[1.18] 30	[0.95] 24
▲ 267208		[5.00] 127	[3.63] 92,1	[0.94] 23,8		[0.38] 9,5	[1.18] 30	[0.95] 24

Andruckspindel Metrisch

- Rotes, vulkanisiertes Neopren-Druckstück, labsfrei (Härte 85 Shore)
- Temperaturbeständig: -20°C bis 100°C [-22°F bis 212°F]
- Ölresistent, labs- (Silicon) frei
- Inkl. 2 Befestigungsmuttern



Art.Nr.	M	L	L1	SW	H	A	ØD	ØD1
● 431208-M	M6	[1.00] 25,4	[0.6] 15,8	[0.39] 10	[0.13] 3,2	[0.13] 3,3	[0.66] 16,8	[0.66] 16,8
● 424208-M		[1.63] 41,3	[1.25] 31,7			[0.13] 3,2	[0.66] 16,8	[0.66] 16,8
● 202208-M	M8	[1.73] 44	[1.18] 30	[0.51] 13	[0.16] 4	[0.12] 3	[0.63] 16	[0.47] 12
● 215208-M		[2.13] 54	[1.57] 40			[0.12] 3	[0.63] 16	[0.47] 12
● 225208-M	M10	[2.09] 53	[1.38] 35	[0.67] 17	[0.20] 5	[0.20] 5	[0.83] 21	[0.55] 14
● 2007208-M		[2.48] 63	[1.77] 45			[0.20] 5	[0.83] 21	[0.55] 14
● 507208-M	M12	[3.27] 83	[2.56] 65	[0.75] 19	[0.24] 6	[0.28] 7	[1.02] 26	[0.78] 20
● 240208-M		[3.11] 79	[2.17] 55			[0.28] 7	[1.02] 26	[0.78] 20
● 235208-M	M12	[4.72] 120	[3.74] 95	[0.75] 19	[0.24] 6	[0.28] 7	[1.18] 30	[0.94] 24
● 247208-M		[4.02] 102	[2.87] 73			[0.28] 7	[1.18] 30	[0.94] 24



Art.Nr.	M	L	L1	SW	H	A	ØD
● 205208-M	M4	[0.87] 22	[0.79] 20	[0.28] 7	[0.09] 2,2	[0.11] 2,8	[0.32] 8
● 201208-M		[1.26] 32	[1.18] 30	[0.28] 7	[0.09] 2,2	[0.11] 2,8	[0.32] 8
● 305208-M	M5	[1.14] 29	[0.98] 25	[0.32] 8	[0.11] 2,7	[0.39] 10	[0.39] 10
● 213208-M		[1.34] 34	[1.18] 30			[0.39] 10	[0.39] 10
● 2013208-M	M8	[1.54] 39	[1.38] 35	[0.51] 13	[0.16] 4	[0.75] 19	[0.75] 19
● 307208-M		[1.69] 43	[1.38] 35			[0.75] 19	[0.75] 19

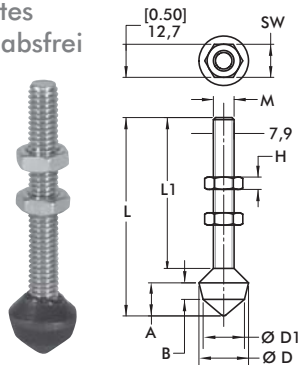
Art.Nr.	D	L	L1	ØG
● 213208-M-L①	[0.24] 6	[1.34] 34	[1.18] 30	M5

① Lieferzeit auf Anfrage

Bevorzugte Märkte: ▲ Nord- Amerika/Süd- Amerika ■ Europa ● Global

Andruckspindel Kegel Inch

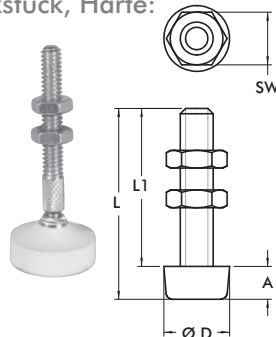
- Schwarzes, vulkanisiertes Neopren-Druckstück, labsfrei (Härte 70-80 Shore)
- Temperaturbeständig: -20°C bis 100°C [-22°F bis 212°F]
- Ölresistent, labs- (Silicon) frei
- Inkl. 2 Befestigungsmuttern



Art.Nr.	M	L	L1	SW	H	A	B	ØD	ØD1
▲ 305208	#10-32	[1.50] 38,1	[1.00] 25,4	[0.38] 9,5	[0.13] 3,3	[0.38] 9,5	[0.19] 4,8	[0.56] 14,2	[0.44] 11,2
▲ 213208	1/4-20	[2.25] 57,2	[1.56] 39,6	[0.44] 11,2	[0.16] 4,0				
▲ 509208	5/16-18	[3.00] 76,2	[2.28] 57,9	[0.50] 12,7	[0.19] 4,8	[0.50] 12,7	[0.25] 6,4	[0.75] 19,1	[0.63] 16
▲ 519208		[5.50] 139,7	[4.75] 120,7						
▲ 210208	3/8-16	[3.50] 88,9	[2.50] 63,5	[0.56] 14,2	[0.23] 5,8	[0.75] 19,1	[0.41] 10,4	[0.88] 22,4	[0.75] 19,1

Große Gelenk-Andruckspindel Inch

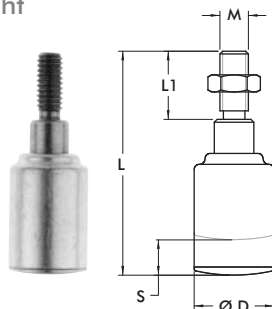
- Weißes Neopren-Druckstück, Härte: 70-80 Shore
- Temperaturbeständig: -40°C bis 105°C [-40°F bis 220°F]
- Neopren - Druckstück
- Inkl. 2 Befestigungsmuttern



Art.Nr.	M	L	L1	SW	H	A	ØD	Schwenkwinkel
▲ 207209	1/4-20	[2.56] 65	[1.56] 39,6	[0.44] 11,2	[0.16] 4		[1.00] 25,4	14°
▲ 507209	5/16-18	[2.98] 75,7	[1.94] 49,3	[0.50] 12,7	[0.19] 4,8	[0.31] 8	[1.50] 38,1	24°
▲ 210209	3/8-16	[3.56] 90,4	[2.44] 62	[0.56] 14,2	[0.23] 5,8		[2.00] 50,8	26°

Federnde Andruckspindel

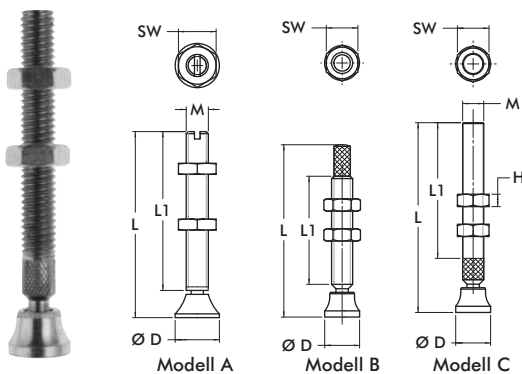
- Geeignet für Schubstangenspanner
- Interne Feder ermöglicht Toleranzausgleich in der Materialstärke
- Verzinkt
- Inkl. 1 Befestigungsmutter



Art.Nr.	M	L	L1	ØD	Max. Federweg S	Federkonstante [lbf./in] N/mm	Max. Kraft [lbf.] N
▲ 905	5/16-18	[2.50] 63,5	[0.75] 19,1	[0.88] 22,2	[0.19] 4,8	[750] 131	[135] 600
● 905-M	M8						
▲ 920	3/8-16	[3.63] 92,2	[1.13] 28,6		[0.38] [9,6]	[822] 144	[308] 1370
● 920-M	M10						

Gelenk-Andruckspindel

- Inkl. 2 Befestigungsmuttern



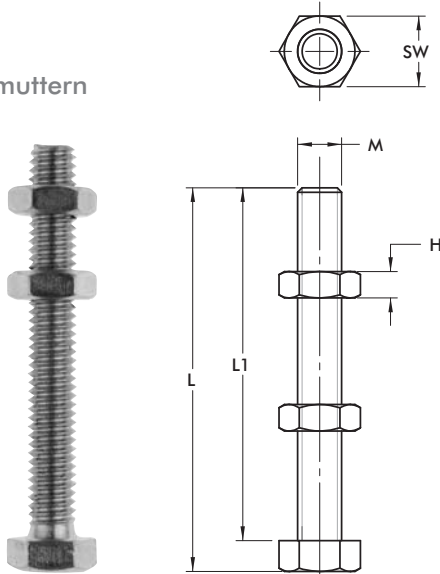
Art.Nr.	M	Modell	L	L1	SW	H	ØD	Schwenkwinkel
■ 207206-M	M6	A	[2.44] 62	[2.13] 54	[0.39] 10	[0.13] 3,2	[0.47] 12	30°
■ 507206-M	M8		[2.87] 73	[2.46] 62,5	[0.51] 13	[0.16] 4	[0.63] 16	
▲ 468206-M	M10	B	[3.00] 76,2	[2.00] 50,8	[0.67] 17	[0.20] 5	[0.79] 20	24°
■ 210206-M		A	[3.31] 84	[2.80] 71			[0.79] 20	
■ 250206-M	M12	A	[4.72] 120	[4.13] 105	[0.75] 19	[0.24] 6	[0.98] 25	30°
▲ 207206	1/4-20	C	[2.38] 60,5	[1.56] 39,6	[0.44] 11,2	[0.16] 4	[0.50] 12,7	14°
▲ 507206	5/16-18		[2.75] 69,9	[1.94] 49,3	[0.50] 12,7	[0.19] 4,8	[0.56] 14,2	
▲ 468206	3/8-16	B	[3.06] 77,7	[1.92] 48,8	[0.56] 14,2	[0.23] 5,8	[0.63] 16	24°
▲ 210206		C	[3.38] 85,9	[2.41] 61,2			[0.63] 16	
▲ 250206	1/2-13	C	[4.63] 117,6	[3.44] 87,4	[0.75] 19,1	[0.31] 7,9	[1.00] 25,4	24°

Bevorzugte Märkte: ▲ Nord- Amerika/Süd- Amerika ■ Europa ● Global

Spindeln

Spindel mit Sechskant-Kopf - Edelstahl

- Kopf ohne Prägung
- Vollgewinde
- Edelstahl
- Inkl. 2 Befestigungsmuttern



Art.Nr.	M	L	L1	SW	H
▲ 205943	#8-32	[0.86] 21,8	[0.75] 19,1	[0.25] 6,4	[0.13] 3,2
▲ 201943	#10-32	[1.37] 34,8	[1.37] 34,8	[0.31] 8	
▲ 202943	1/4-20	[1.67] 42,4	[1.50] 38,1	[0.44] 11,1	[0.16] 4
▲ 207943	5/16-18	[2.72] 69	[2.50] 63,5	[0.50] 12,7	[0.19] 4,8
▲ 237943	3/8-16	[2.75] 69,9		[0.56] 14,2	[0.22] 5,6
▲ 245943	1/2-13	[2.72] 69	[2.38] 60,5	[0.75] 19,1	[0.31] 8
▲ 207943-M	M8	[2.78] 70,6	[2.56] 65	[0.51] 13	[0.16] 4

Spindel mit Sechskant-Kopf

- Kopf ohne Prägung
- Vollgewinde
- Verzinkt
- Inkl. 2 Befestigungsmuttern

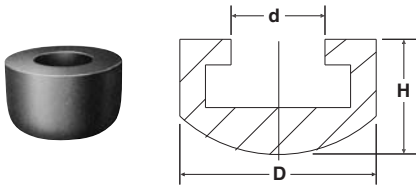
Art.Nr.	M	L	L1	SW	H	Art.Nr.	M	L	L1	SW	H
● 205203-M	M6	[1.93] 49	[1.77] 45	[0.39] 10	[0.13] 3,2	▲ 205203	1/4-20	[1.92] 48,8	[1.75] 44,5	[0.44] 11,2	[0.16] 4
▲ 461203-M	M8	[1.20] 30,5	[0.98] 25	[0.51] 13	[0.16] 4	▲ 202203		[3.17] 80,5	[3.00] 76,2		
● 207203-M			[2.97] 75,5	[2.76] 70			▲ 461203	[1.22] 31	[1.00] 25,4		
▲ 491203-M	M10	[1.85] 47	[1.57] 40			▲ 441203	5/16-18	[1.97] 50	[1.75] 44,5	[0.50] 12,7	[0.19] 4,8
● 210203-M			[3.03] 77	[2.76] 70	[0.67] 17	[0.20] 5		▲ 207203	[2.72] 69,1	[2.50] 63,5	
▲ 240203-M	M12	[4.21] 107	[3.94] 100			▲ 491203	3/8-16	[1.75] 44,5	[1.50] 38,1		
● 220203-M			[3.46] 88	[3.15] 80	[0.75] 19	[0.24] 6		▲ 210203	[3.00] 76,2	[2.75] 69,9	[0.56] 14,2
● 267203-M	M16	[5.12] 130	[4.72] 120	[0.94] 24	[0.28] 7	▲ 240203		[4.25] 108	[4.00] 101,6		
▲ 105203*	#8-32	[0.86] 21,8	[0.75] 19,1	[0.25] 6,4	[0.13] 3,3	▲ 527203		[5.25] 133,4	[5.00] 127		
▲ 305203	#10-32	[1.12] 28,4	[1.00] 25,4	[0.31] 8		▲ 325203	1/2-13	[2.84] 72,1	[2.50] 63,5	[0.75] 19,1	[0.31] 7,9
						▲ 220203			[3.34] 84,8	[3.00] 76,2	
						▲ 250203	5/8-11	[4.42] 101,6	[4.00] 101,6	[0.38] 9,5	[0.38] 9,5

*Material: Nylon

Bevorzugte Märkte: ▲ Nord- Amerika/Süd- Amerika ■ Europa ● Global

Neopren - Kappe

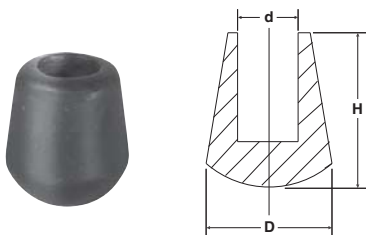
- Geeignet für Sechskant - Kopf
- Härte: 60-70 Shore
- Temperaturbeständig:
-40°C bis 105°C [-40°F bis 220°F]



Art.Nr.	D	d	H	Für Spindel Ø
● 215119	[0.63] 16	[2.50] 63,5	[0.44] 11,1	M6 oder 1/4
● 225119	[0.75] 19,1	[0.31] 8	[0.50] 12,7	M8 oder 5/16
● 235119	[0.88] 22,3	[0.38] 9,7	[0.53] 13,5	M10 oder 3/8

Spezielle Neopren – Kappe, rund

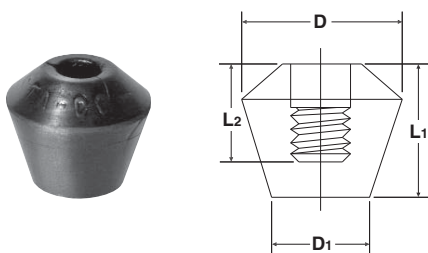
- Geeignet für Gewinde
- Härte: 60-70 Shore
- Temperaturbeständig:
-40°C bis 105°C [-40°F bis 220°F]



Art.Nr.	D	d	H	Für Spindel Ø
▲ 424107	[0.44] 11,1	[0.22] 5,6	[0.44] 11,1	M6 oder 1/4
▲ 235110	[0.72] 18,3	[0.34] 8,6	[0.88] 22,3	M10 oder 3/8

Polyurethan - Kappe, flach

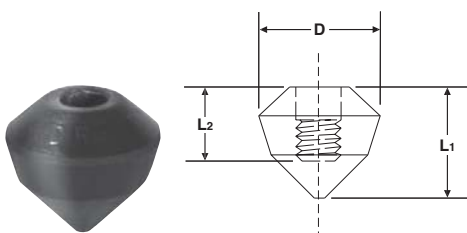
- Flache Auflage mit Innengewinde
- Härte: 80 Shore
- Temperaturbeständig:
-70°C bis 95°C [-90°F bis 200°F]



Art.Nr.	D	D1	L1	L2	Für Spindel Ø
▲ 215219	[0.79] 20	[0.50] 12,7	[0.69] 17,5	[0.50] 12,7	1/4
▲ 225219	[0.81] 20,5	[0.63] 16	[0.88] 22,3	[0.63] 16	5/16
▲ 235219	[0.81] 20,5	[0.63] 16	[0.88] 22,3	[0.63] 16	3/8

Polyurethan - Kappe, kegelförmig

- Spitze Auflage mit Innengewinde
- Härte: 80 Shore
- Temperaturbeständig:
-70°C bis 95°C [-90°F bis 200°F]



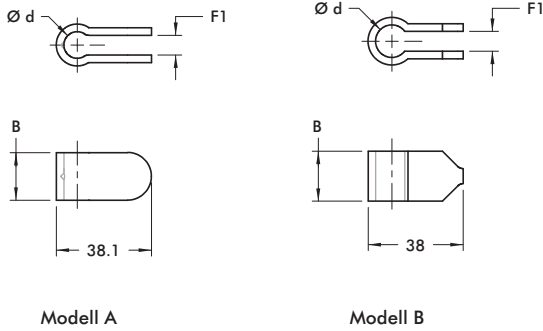
Art.Nr.	D	L1	L2	Für Spindel Ø
▲ 215319	[0.81] 20,5	[0.75] 19,1	[0.50] 12,7	1/4
▲ 225319	[0.81] 20,5	[0.94] 23,9	[0.63] 16	5/16
▲ 235319	[0.81] 20,5	[0.94] 23,9	[0.63] 16	3/8

Bevorzugte Märkte: ▲ Nord- Amerika/Süd- Amerika ■ Europa ● Global

Spindelhalter und Flankenscheiben

Spindelhalter

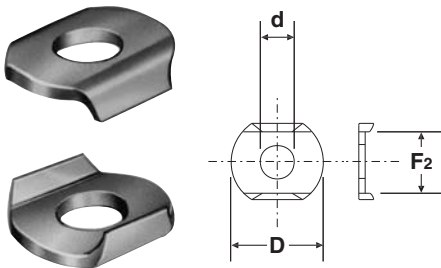
- Geeignet für Ausführung mit massivem Spannarm



Art.Nr.	A	B	Ød	F1	Für Spindel Ø	Modell
▲ 207105	[1.25] 31,8	[0.63] 16	[0.33] 8,4	[0.25] 6,4	M8 oder 5/16	A
■ 207105-M	[1.26] 32		[0.32] 8,2	[0.24] 6		B
▲ 210114	[1.50] 38,1	[0.75] 19,1	[0.53] 13,5	[0.31] 8	M10 oder 3/8	A
■ 210114-M	[1.49] 38	[0.78] 20	[0.51] 13			B
▲ 247110	[1.63] 41,4	[0.88] 22,3	[0.56] 14,2	[0.38] 9,7	M12 oder 1/2	A
■ 247110-M	[1.61] 41	[0.87] 22,2	[0.57] 14,4			B
● 110122	[1.88] 47,8	[1.25] 31,8	[0.64] 16,3	[0.23] 5,8	M16 oder 5/8	A
▲ 250121		[1.00] 25,4				M12 oder 1/2
● 2002115-E	[0.97] 24,6	[0.50] 12,7	[0.26] 6,6	[0.23] 5,8	M6 oder 1/4	B
● 2007115-E	[1.26] 32	[0.75] 19,1	[0.34] 8,6		M8 oder 5/16	
● 2010115-E	[1.58] 40,1	[1.13] 28,7	[0.41] 10,4		M10 oder 3/8	

Flankenscheiben

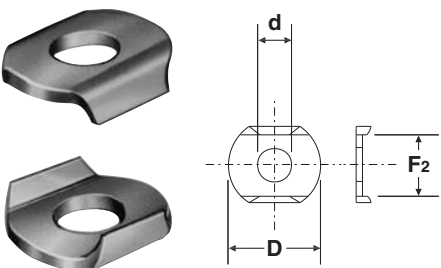
- Geeignet für Spanner mit U-Arm und offenem U-Arm
- Verzinkt



Art.Nr.	ØD	Ød	F2	Für Spindel Ø
● 105106	[0.44] 11,2	[0.17] 4,3	[0.33] 8,3	M4 oder #8
● 102111	[0.56] 14,2	[0.20] 5,1	[0.38] 9,6	M5 oder #10
● 215105	[0.69] 17,5	[0.26] 6,7	[0.50] 12,7	M6 oder 1/4
● 507107	[0.88] 22,4	[0.33] 8,4	[0.59] 15	M8 oder 5/16
● 235106	[1.00] 25,4	[0.41] 10,5	[0.75] 19,1	M10 oder 3/8
● 247109	[1.26] 32	[0.53] 13,5	[0.91] 23,2	M12 oder 1/2
● 267102	[1.44] 36,5	[0.66] 16,8	[1.03] 26,2	M16 oder 5/8

Flankenscheiben – Edelstahl

- Geeignet für Spanner mit U-Arm und offenem U-Arm



Art.Nr.	ØD	Ød	F2	Für Spindel Ø
● 105906	[0.44] 11,2	[0.17] 4,3	[0.33] 8,3	M4 or #8
● 102911	[0.56] 14,2	[0.20] 5,1	[0.38] 9,6	M5 or #10
● 215905	[0.69] 17,5	[0.26] 6,7	[0.50] 12,7	M6 or 1/4
● 507907	[0.88] 22,4	[0.33] 8,4	[0.60] 15,2	M8 or 5/16
● 235906	[1.00] 25,4	[0.41] 10,5	[0.75] 19,1	M10 or 3/8
● 247909	[1.26] 32	[0.53] 13,5	[0.91] 23,2	M12 or 1/2
● 267902	[1.25] 31,8	[0.53] 13,5	[0.91] 23,2	M16 or 5/8

Bevorzugte Märkte: ▲ Nord- Amerika/Süd- Amerika ■ Europa ● Global

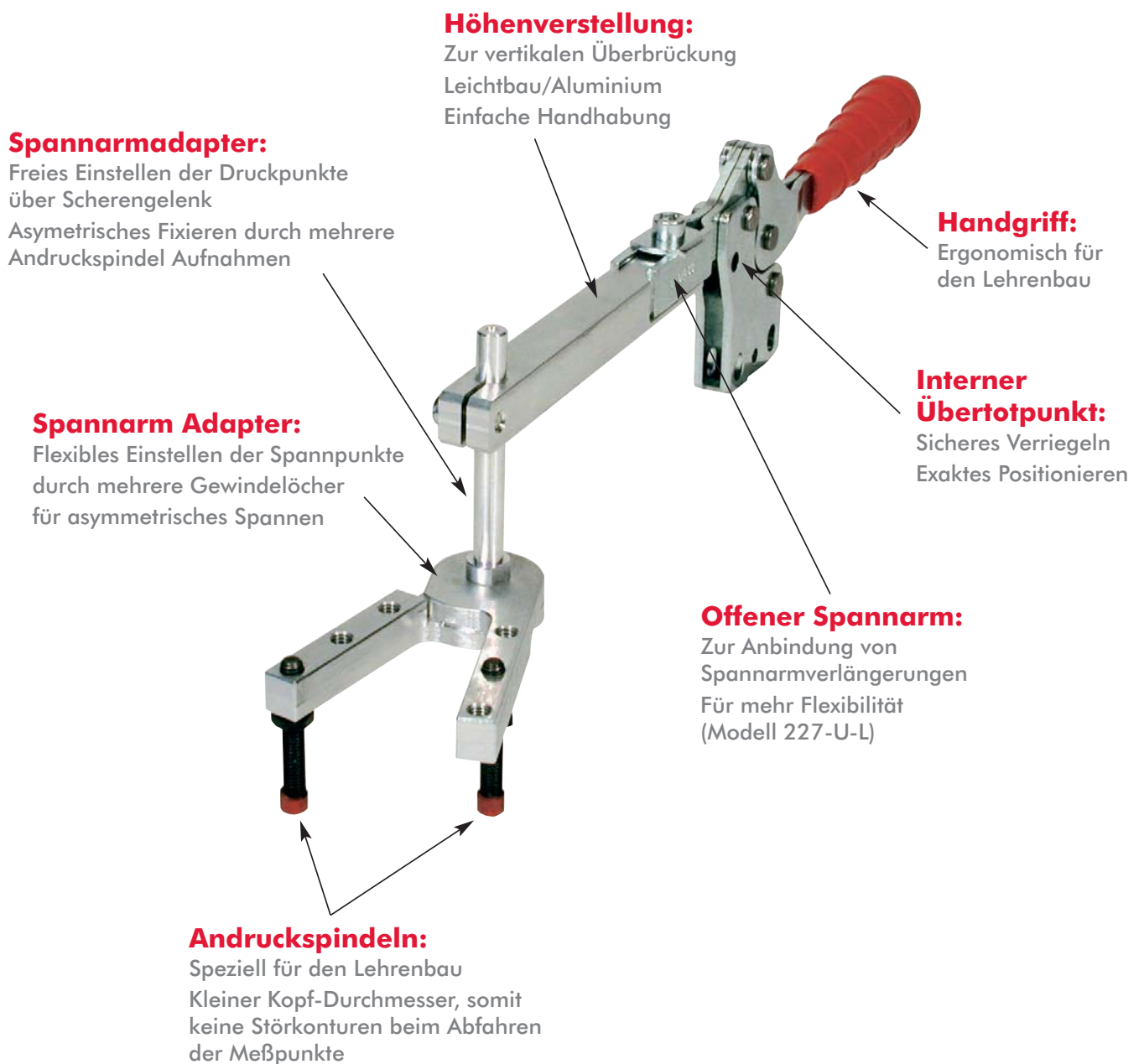
Adapter und Verlängerungen

Produktmerkmale:

- Flexibles Positionieren durch Verlängerung und Höhenverstellung
- Spannarme vorne offen zur Aufnahme von Verlängerungen
- Leichtbau/Aluminium

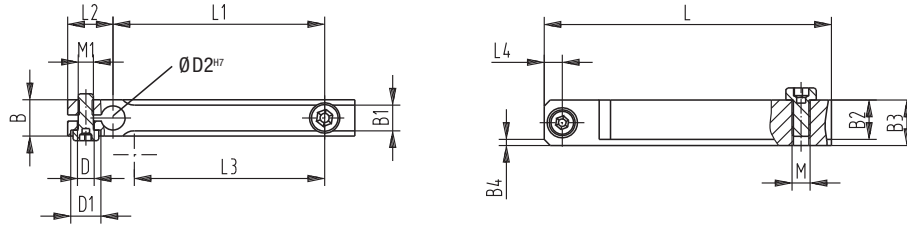
Anwendungsbereiche:

- Prüfen
- Lehren
- überall, wo 2-Punkt-Positionierung erforderlich ist



Adapter und Verlängerungen

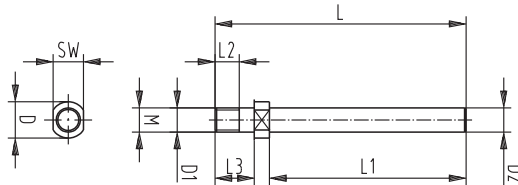
Verlängerungen



Modell	Verlängerungen	B	B1 +0, -1	B2	B3	B4	DØ	D1 Ø	D2 ^{H7}	L	L1 ±0,2	L2	L3	L4	M	M1
213-U-L / 213-UB-L	L-213-1-01	[0.39]	[0.22]	[0.31]	[0.39]	2x45°	[0.22]	--		[1.97]	[1.18]	[0.47]	[0.79]	[0.20]	M4	M5
2013-U / 2013-UB	L-213-1-02	10	5,5	8	10		5,5			[3.54]	[2.76]	12	20	5		
2013-UR / 2013-UBR	L-213-1-02									90	70					
202-U-L / 202-UB-L	L-217-1-01								[0.24]	[2.17]	[1.18]		[1.30]			
217-U-L / 217-UB-L	L-217-1-01								6	55	30		33			
2002-U-L / 2002-UB-L	L-217-1-02		[0.26]	[0.35]	[0.47]	2x45°	[0.22]			[3.74]	[2.76]				M5	M5
2017-U / 2017-UB	L-217-1-02		6,5	9	12		5,5			95	70					
2017-UR / 2017-UBR	L-217-1-03									[5.31]	[4.33]		[1.89]			
	L-217-1-03									135	110		48			
207-U-L / 207-UB-L	L-227-1-01	[0.47]						[0.39]		[2.17]	[1.18]	[0.59]	[1.30]	[0.24]		
227-U-L / 227-UB-L	L-227-1-01	12						10		55	30	15	33	6		
2007-U-LS / 2007-UB-LS	L-227-1-02		[0.33]	[0.51]	[0.59]	2x45°	[0.22]			[3.74]	[2.76]				M6	M5
2027-U / 2027-UB	L-227-1-02		8,5	13	15		5,5			95	70					
2027-UR / 2027-UBR	L-227-1-03									[5.31]	[4.33]		[2.87]			
	L-227-1-03									135	110		73			
	L-227-1-04									[6.89]	[5.91]					
	L-227-1-04									175	150					

ⓘ Lieferzeit auf Anfrage

Höhenverstellung

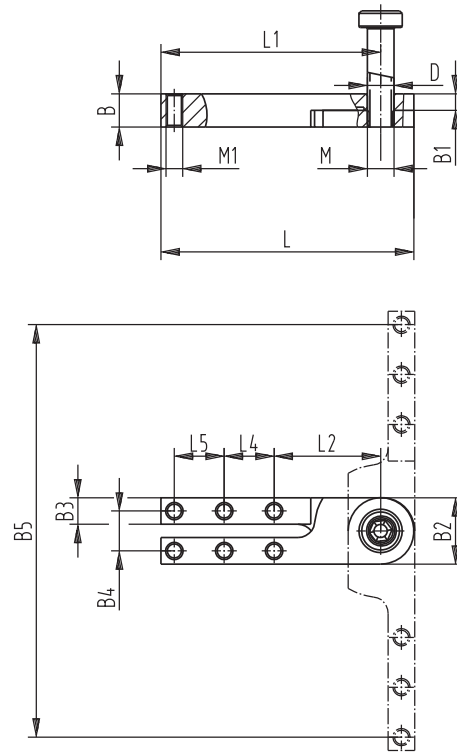


Modell	Höhenverstellung	DØ	D1 Ø f7	D2 f7	L	L1	L2	L3	SW	M
213-U-L / 213-UB-L	L-213-2-01		[0.20]	[0.24]	[2.05]	[1.38]				M5
2013-U / 2013-UB	L-213-2-01		5	6	52	35				
2013-UR / 2013-UBR	L-213-2-02				[3.23]	[2.56]				
	L-213-2-02				82	65				
202-U-L / 202-UB-L	L-217-2-01	[0.39]			[2.05]	[1.38]		[0.47]	[0.31]	
217-U-L / 217-UB-L	L-217-2-01	10			52	35		12	8	
2002-U-LS / 2002-UB-LS	L-217-2-01		[0.24]	[0.24]	[3.23]	[2.56]				M6
2017-U / 2017-UB	L-217-2-01		6	6	82	65				
2017-UR / 2017-UBR	L-217-2-02						[0.31]			
	L-217-2-02						8			
207-U-L / 207-UB-L	L-227-2-01				[2.09]	[1.38]				
227-U-L / 227-UB-L	L-227-2-01				53	35				
2007-U-LS / 2007-UB-LS	L-227-2-01	[0.31]	[0.31]	[0.31]	[3.23]	[2.56]		[0.51]	[0.39]	M8
2027-U / 2027-UB	L-227-2-01	8	8	88	82	65		13	10	
2027-UR / 2027-UBR	L-227-2-02									

ⓘ Lieferzeit auf Anfrage

Adapter und Verlängerungen

Spannarm Adapter



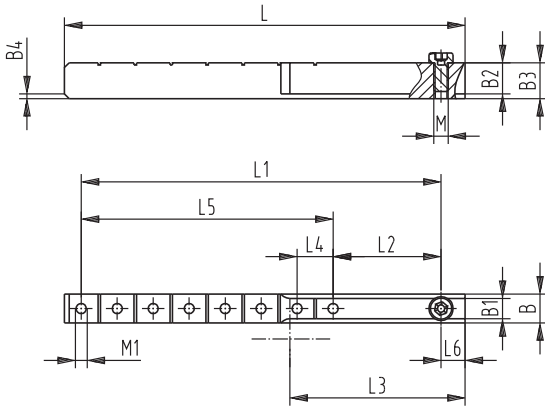
Modell	Spannarm Adapter	B	B1	B2	B3	B4	B5	D \varnothing _{H7}	L	L1	L2	L4	L5	L6	M	M1
213-U-L / 213-UB-L 2013-U / 2013-UB 2013-UR / 2013-UBR	L-213-3-01 ⓘ							[0.20] 5							M5	M5
202-U-L / 202-UB-L 217-U-L / 217-UB-L 2002-U-LS / 2002-UB-LS 2017-U / 2017-UB 2017-UR / 2017-UBR	L-217-3-01 ⓘ	[0.39] 10	[0.20] 5	[0.79] 20	[0.31] 8	[0.47] 12	[3.70] 94	[0.24] 6	[2.40] 61	[2.01] 51	[1.26] 32	[0.59] 15		[0.39] 10	M6	M5
207-U-L / 207-UB-L 227-U-L / 227-UB-L 2007-U-LS / 2007-UB-LS 2027-U / 2027-UB 2027-UR / 2027-UBR	L-227-3-01 ⓘ						4.88] 124	[0.31] 8	[2.99] 76	[2.60] 66			[0.59] 15		M8	M5

ⓘ Lieferzeit auf Anfrage

Adapter und Verlängerungen

Verlängerungsleiste:

- Einfaches Ablängen
- Mit Gewindebohrungen zur Aufnahme von Andruckspindeln



Modell	Verlängerungsleiste	B +0, -1	B1	B2	B3	B4	L ±0,2	L1	L2	L3	L4	L5	L6	M	M1	
213-U-L / 213-UB-L 2013-U / 2013-UB 2013-UR / 2013-UBR	L-213-4-01 ⓘ	[0.39] 10	[0.22] 5,5	[0.31] 8	[0.39] 10	2x45°	[2.95] 75	[2.36] 60	[0.94] 24	[0.79] 20	[0.47] 12	[1.42] 36	[0.31] 8	M4	M5	
202-U-L / 202-UB-L 217-U-L / 217-UB-L 2002-U-LS / 2002-UB-LS 2017-U / 2017-UB 2017-UR / 2017-UBR	L-217-4-01 ⓘ		[0.26] 6,5	[0.35] 9	[0.47] 12	2x45°	[5.00] 127	[4.33] 110	[1.38] 35	[1.89] 48		[2.95] 75	[0.39] 10	M5	M5	
207-U-L / 207-UB-L 227-U-L / 227-UB-L 2007-U-LS / 2007-UB-LS 2027-U / 2027-UB 2027-UR / 2027-UBR	L-227-4-01 ⓘ	[0.47] 12		[0.33] 8,5	[0.51] 13	[0.59] 15	2x45°	[6.57] 167	[5.91] 150	[1.77] 45	[2.87] 73		[4.13] 105	[0.39] 10	M6	M5

ⓘ Lieferzeit auf Anfrage