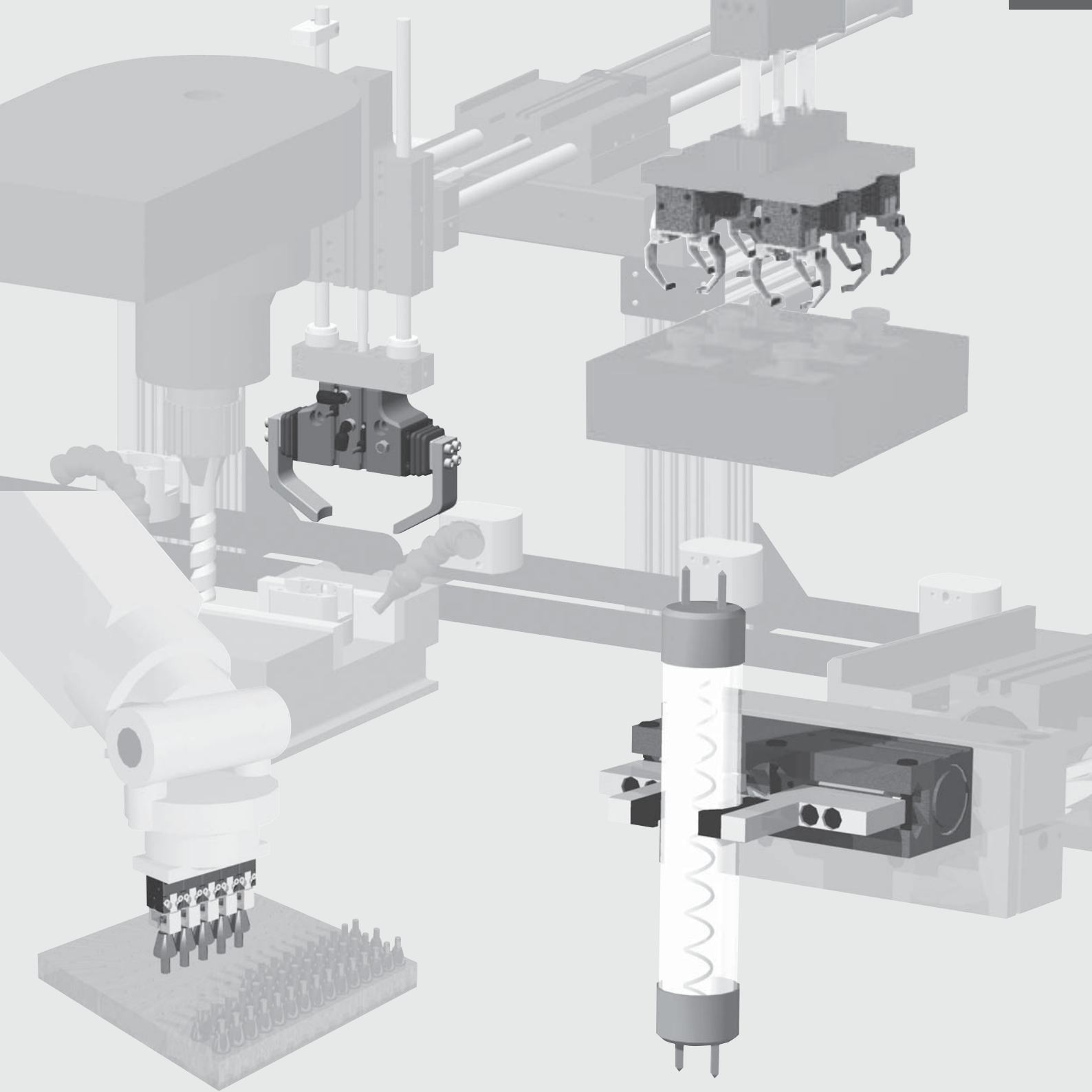


Parallel Grippers



Parallel Motion Gripper

DPE/RPE Electric Gripper

- Clean room class 100, class 10 with scavenge
- Cost comparable to pneumatic systems
- Eliminates need for pneumatics
- Utilizes 24VDC signal
- No programming or software required
- 60 parts per minute—no problem!
- Compact, lightweight design

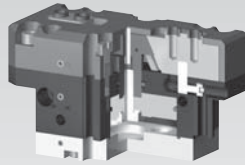


See Page **1.8**

Preferred Market: ● Global

RDH Series Two Jaw Parallel Gripper

- Shielded design deflects chips and other particulate away from the internal components
- Large surface area of the jaws allows for use of long fingers
- All gripper sizes are available in 2 strokes sizes.



See Page **1.20**

Preferred Market: ● Global

2P Series Precision Two Jaw Parallel Gripper

- Precision operation
- Cylindrical design
- Optional springs for failsafe operation or for increased grip forces
- Side or rear airports
- Tandem piston for double grip force
- Optional Protective Boot for harsh environments
- All gripper sizes are available in 2 strokes sizes

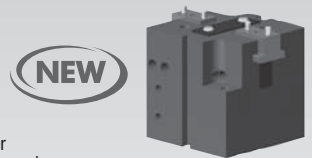


See Page **1.40**

Preferred Market: ■ EU ◆ SA

CP Series Compact Two Jaw Parallel Gripper

- Rugged, compact design
- Shielded design deflects chips and other particulate away from the internal components
- Optional springs for failsafe operation or for increased grip forces
- Side or rear airports
- Multi-sensor capable design
- All gripper sizes are available in 2 strokes sizes

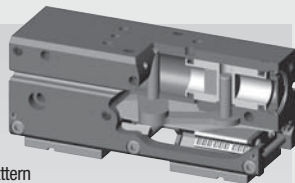


See Page **1.58**

Preferred Market: ■ EU

DPP Series DIRECTCONNECT Precision Gripper

- Featuring our DIRECTCONNECT™ mounting pattern
- “Dual-V” precision roller bearing design provides zero side play for excellent part position repeatability
- Optional double acting spring assist for increased force or failsafe operation
- Low friction design allows for delicate part handling
- Synchronized and non-synchronized versions available

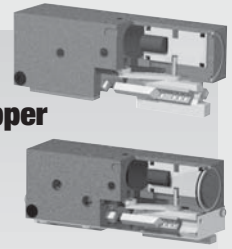


See Page **1.74**

Preferred Market: ● Global

RPL/RPLC Series Low Profile/Clean Room Gripper

- Lightweight, Compact
- Patented Dual “V” Roller Bearing System
- Excellent accuracy and repeatability
- Synchronized and non-synchronized versions available
- Designed for use in Class 10 clean rooms as well as in harsh environments
- Stainless Steel hardware and covers for durability
- Vacuum/Pressure port

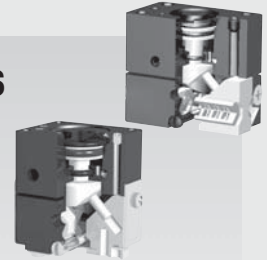


See Page **1.90**

Preferred Market: ● Global

RPM/RPMC Series Micro/Clean Room Gripper

- Extremely small size—as small as 5/8" wide!
- Compact design allows for gripping small parts in small spaces
- Top air manifold eliminates the need for air fittings and allows grippers to be mounted in close array
- Ultra low friction mechanism allows for consistent, repeatable gripping forces
- Shielded with purge port

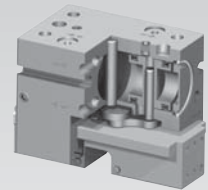


See Page **1.106**

Preferred Market: ● Global

DPG Series DIRECTCONNECT Modular Gripper

- Multiple DIRECTCONNECT™ mounting locations
- Multiple air port locations
- Spring assisted design for failsafe operation or increased grip force
- Shielded design repels contaminants
- Synchronized and non-synchronized versions

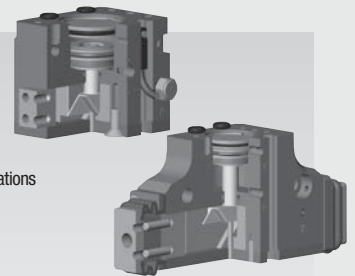


See Page **1.122**

Preferred Market: ● Global

DPDS & DPDL DIRECTCONNECT Modular Gripper

- Multiple DIRECTCONNECT™ mounting locations
- Multiple air port locations
- Multiple strokes per size
- Front-to-back thru-body mounting
- Extended strokes (DPDL)
- Purge/scavenge ports for harsh environments
- Optional corrosion resistant hardware, high temperature seals, and sealed jaw boot (DPDL)

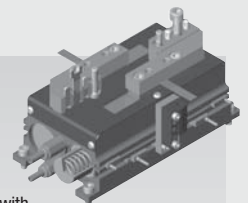


See Page **1.134**

Preferred Market: ● Global

DPL Series DIRECTCONNECT Long Stroke Gripper

- For use in confined spaces, combining long strokes with the high gripping force provided by two simultaneously acting pistons.
- Offers wide range of options and accessories (safety springs, in-line jaws, magneto resistive or inductive sensors).
- Enclosed, shielded design repels chips and other particulate from internal drive mechanism.



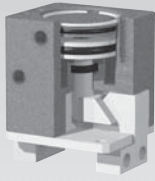
See Page **1.158**

Preferred Market: ● Global

Products Overview

RP Series Miniature Double Wedge Gripper

- Compact size, high gripping force, and extended jaw design facilitates finger attachment for smaller parts.
- High grip force to weight ratio make these grippers very popular on small robots.
- Miniature size allows banks of grippers to be mounted in close proximity for multiple part picking and placing.
- Internally sealed for use in hostile environments

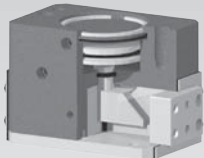


See Page **1.170**

Preferred Market: ● Global

RP Series Double Wedge Gripper

- Patented "Double Wedge Design" for extreme high grip force to size ratio
- Internally sealed for use in hostile environments
- Superior accuracy and repeatability
- Made from 7075-T6 aircraft quality aluminum hardcoat anodized to RC60 with Teflon® impregnation
- Highest grip force to weight/size ratio in the industry

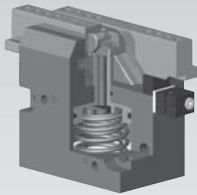


See Page **1.176**

Preferred Market: ● Global

GC Series Precision Parallel Gripper

- Precision operation
- Spring assist
- Grippers are fitted with 2 sensor holders (sensor available separately)
- Side or rear airports
- Optional 3rd sensor for part sensing, Viton® seals for high temperature applications, and encoder available

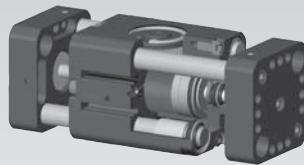


See Page **1.186**

Preferred Market: ● Global

DPW Series DIRECTCONNECT™ Wide Body Gripper

- Features our DIRECTCONNECT™ mounting pattern
- Excellent jaw support through the full body of the gripper
- Highly configurable gripper featuring multiple options and accessories
- Synchronized and non-synchronized versions available
- Each gripper is offered in 2 different strokes

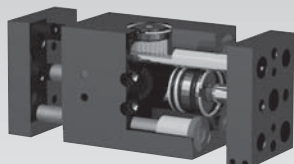


See Page **1.196**

Preferred Market: ● Global

RPW Series Large Format Wide Body Gripper

- Excellent jaw support through the full body of the gripper
- High gripping forces utilizing two opposing pistons
- Synchronized and non-synchronized versions available
- Superior accuracy and repeatability
- Sealed design for harsh environments

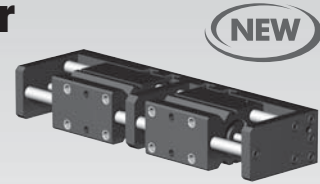


See Page **1.214**

Preferred Market: ● Global

RPR Gladiator Heavy Duty Parallel Gripper

- Wide body, long stroke design
- Designed for machining and foundry applications
- Rigid design and full body support of jaws allows for longer finger lengths
- High temperature design available



See Page **1.222**

Preferred Market: ▲ NA ◆ SA

B-Series Industrial Grippers

- For large and wide parts in machining and foundry applications
- Heavy duty, rugged designs
- Extremely high grip forces and moment loads



See Page **1.228**

Preferred Market: ▲ NA ◆ SA

RTH Series Three Jaw Centering Gripper

- Shielded design (DTH) deflects chips and other particulate away from the internal components
- Large surface area of the jaws allows for use of long fingers

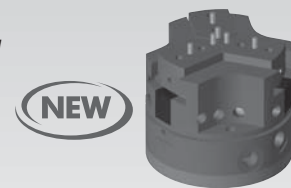


See Page **1.230**

Preferred Market: ● Global

3P Series Precision Three Jaw Parallel Gripper

- Precision operation
- Cylindrical design
- Optional springs for failsafe operation or for increased grip forces
- Side or rear airports
- Tandem piston for double grip force
- Optional Protective Boot for harsh environments
- All gripper sizes are available in 2 strokes sizes

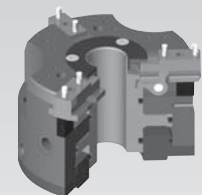


See Page **1.252**

Preferred Market: ■ EU ◆ SA

PPC Series Through Hole Gripper

- Unique through hole design
- 3 jaw concentric parallel gripper
- Shielded design protects internal components for increased life in harsh environments
- Optional safety springs, extended strokes, sensors, and high temperature seals



See Page **1.268**

Preferred Market: ● Global

Destaco-Robohand Parallel Gripper Product Selector

Model #	Stroke Range	Total Grip Force Range	Maximum Finger Length @ 60 PSI (4 bar)	Actuation Time	Operating Pressure	Environment	Features	Options	
Two Jaws 0 - 0.25 in. [0 - 6.3mm] 0.25 - 0.50 in. [6.3 - 12.7mm] 0.50 - 0.75 in. [12.7 - 19.1mm] 0.75 - 1.00 in. [19.1 - 25.4mm] 1.00 - 1.25 in. [25.4 - 31.8mm] 1.25 - 1.50 in. [31.8 - 38.1mm] 1.50 - 1.75 in. [38.1 - 44.5mm] 1.75 - 2.00 in. [44.5 - 50.8mm] 2.00 - 2.25 in. [50.8 - 57.1mm] 2.25 - 2.50 in. [57.1 - 63.5mm] 2.50 - 2.75 in. [63.5 - 69.8mm] 2.75 - 3.00 in. [69.8 - 76.2mm] 3.00+ [76.2mm+]									
Three Jaws 1 - 10 lbs. [0.45 - 45N] 10 - 25 lbs. [45 - 111N] 25 - 50 lbs. [111 - 223N] 50 - 100 lbs. [223 - 445N] 100 - 500 lbs. [445 - 2225N] 500 - 3000 lbs. [2225 - 13350N]									
0 - 2 in. [0 - 50.8mm] 2 - 4 in. [50.8 - 102mm] 4 - 6 in. [102 - 152mm] 6 - 8 in. [152 - 203mm] 8 - 10 in. [203 - 254mm] 10 - 12 in. [254 - 305mm] 12 - 14 in. [305 - 356mm] 14 - 16 in. [356 - 406mm] 16 - 18 in. [406 - 457mm] 18 - 20 in. [457 - 508mm] 20 in.+ [508mm+]									
0.05 - 0.1 sec. 0.1 - 0.5 sec. 0.5 - 0.75 sec. 0.75 - 1 sec.									
5 - 100 psi [0.3 - 7 bar] 20 - 100 psi [1.5 - 7 bar] 40 - 100 psi [3 - 7 bar] 50 - 100 psi [3.5 - 7 bar]									
24VDC Electric Actuation Clean Room Environment Normal Environment Harsh/Dirty Environment									
Failsafe Operation Inductive Sensors Magneto Resistive Sensors									
Double Acting Cylinder Single Acting/Spring Return Double Acting/Spring Assist Non-Synchronous Option									
DPE ELECTRIC GRIPPER									
DPE-200-25									
RPE ELECTRIC GRIPPER									
RPE-100									
RPE-101									
RDW/DDH SHIELDED 2 JAW DESIGN									
RDH-1									
RDH-1-L									
RDH-2									
RDH-2-L									
RDH-3									
RDH-3-L									
RDH-4									
RDH-4-L									
RDH-5									
RDH-5-L									
RDH-6									
RDH-6-L									
RDH-7									
RDH-7-L									
RDH-8									
RDH-8-L									
2P PRECISION DESIGN									
6002P									
6002P-C									
8002P									
8002P-C									
11002P									
11002P-C									
14002P									
14002P-C									
16502P									
16502P-C									
16502PGR									
CP SQUARE DESIGN									
CP-1									
CP-1-C									
CP-2									
CP-2-C									
CP-3									
CP-3-C									
CP-4									
CP-4-C									
CP-5									
CP-5-C									
CP-6									
CP-6-C									
DIRECTCONNECT PRECISION "DUAL-V" DESIGN									
DPP-10M-06									
DPP-10M-12									
DPP-14M-15									
DPP-14M-25									
DPP-20M-25									
DPP-20M-38									
LOW PROFILE DESIGN									
RPL-1									
RPL-2									
RPL-3									
RPL-4									
LOW PROFILE CLEAN ROOM DESIGN									
RPLC-1									
RPLC-2									
RPLC-3									
RPLC-4									
MICRO DESIGN									
RPM-1									
RPM-2									
RPM-3									
MICRO CLEAN ROOM DESIGN									
RPMC-1									
RPMC-2									
RPMC-3									

Continued on next page

Destaco-Robohand Parallel Gripper Product Selector

Model #	Two Jaws		Three Jaws		Total Grip Force Range	Maximum Finger Length @ 60 PSI [4 bar]	Actuation Time	Operating Pressure	Environment	Inductive Sensors	Magneto Resistive Sensors	Double Acting Cylinder	Single Acting/Spring Return	Double Acting/Spring Assist	Non-Synchronous Option
	0 - 0.25 in. [0 - 6.3mm]	0.25 - 0.50 in. [6.3 - 12.7mm]	0.50 - 0.75 in. [12.7 - 19.1mm]	0.75 - 1.00 in. [19.1 - 25.4mm]											
DIRECTCONNECT GIB DESIGN															
DPG-10-1	•														
DPG-10-2	•														
DPG-10-3	•														
DPG-10-4	•														
DIRECTCONNECT DOUBLE WEDGE DESIGN															
DPDS-047	•														
DPDS-056	•														
DPDS-088	•														
DPDS-125	•														
DPDL-047	•														
DPDL-056	•														
DPDL-088	•														
DPDL-125	•														
DIRECTCONNECT LONG STROKE DESIGN															
DPL-2520	•														
DPL-2535	•														
DPL-3230	•														
DPL-3250	•														
DPL-4040	•														
DPL-4070	•														
DOUBLE WEDGE DESIGN															
RP-5	•														
RP-10	•														
RP-11	•														
RP-12	•														
RP-15	•														
RP-17	•														
RP-18	•														
RP-19	•														
PRECISION DESIGN															
DGC-25	•														
DGC-45	•														
DGC-65	•														
GC-85	•														
GC-105	•														
DIRECTCONNECT WIDE BODY DESIGN															
DPW-250M-1	•														
DPW-250M-2	•														
DPW-375M-1	•														
DPW-375M-2	•														
DPW-500M-1	•														
DPW-500M-2	•														
LARGE FORMAT WIDE BODY DESIGN															
RPW-625-1	•														
RPW-625-2	•														
RPW-750	•														
GLADIATOR GRIPPER															
RPR-57-200	•														
"B-SERIES" INDUSTRIAL GRIPPERS															
BPW-1600	•														
BPW-2000	•														
BRP-20	•														
BRP-21	•														
BRP-21-D	•														
BPG-160	•														
RTH/DTH SHIELDED 3 JAW DESIGN															
RTH/DTH-1	•														
RTH/DTH-1-L	•														
RTH/DTH-2	•														
RTH/DTH-2-L	•														
RTH/DTH-3	•														
RTH/DTH-3-L	•														
RTH/DTH-4	•														
RTH/DTH-4-L	•														
RTH/DTH-5	•														
RTH/DTH-5-L	•														
RTH/DTH-6	•														
RTH/DTH-6-L	•														
RTH/DTH-7	•														
RTH/DTH-7-L	•														
RTH/DTH-8	•														
RTH/DTH-8-L	•														

Continued on next page

Destaco-Robohand Parallel Gripper Product Selector

Model #	Stroke Range		Total Grip Force Range	Maximum Finger Length @ 60 PSI (4 bar)	Actuation Time	Operating Pressure	Environment											
	Two Jaws	Three Jaws					Clean Room Environment	Normal Environment	Harsh/Dirty Environment	Failsafe Operation	Inductive Sensors	Magneto Resistive Sensors	Double Acting Cylinder	Single Acting/Spring Return	Double Acting/Spring Assist	Non-Synchronous Option		
3P PRECISION DESIGN																		
6003P	•					•	•	•	•	•	•	•	•	•	•	•	•	•
6003P-C	•					•	•	•	•	•	•	•	•	•	•	•	•	•
8003P	•					•	•	•	•	•	•	•	•	•	•	•	•	•
8003P-C	•					•	•	•	•	•	•	•	•	•	•	•	•	•
11003P	•					•	•	•	•	•	•	•	•	•	•	•	•	•
11003P-C	•					•	•	•	•	•	•	•	•	•	•	•	•	•
14003P	•					•	•	•	•	•	•	•	•	•	•	•	•	•
14003P-C	•					•	•	•	•	•	•	•	•	•	•	•	•	•
16503P	•					•	•	•	•	•	•	•	•	•	•	•	•	•
16503P-C	•					•	•	•	•	•	•	•	•	•	•	•	•	•
PPC THROUGH HOLE DESIGN																		
PPC-12	•					•	•	•	•	•	•	•	•	•	•	•	•	•
PPC-12-C	•					•	•	•	•	•	•	•	•	•	•	•	•	•
PPC-25	•					•	•	•	•	•	•	•	•	•	•	•	•	•
PPC-25-C	•					•	•	•	•	•	•	•	•	•	•	•	•	•
PPC-34	•					•	•	•	•	•	•	•	•	•	•	•	•	•
PPC-34-C	•					•	•	•	•	•	•	•	•	•	•	•	•	•

