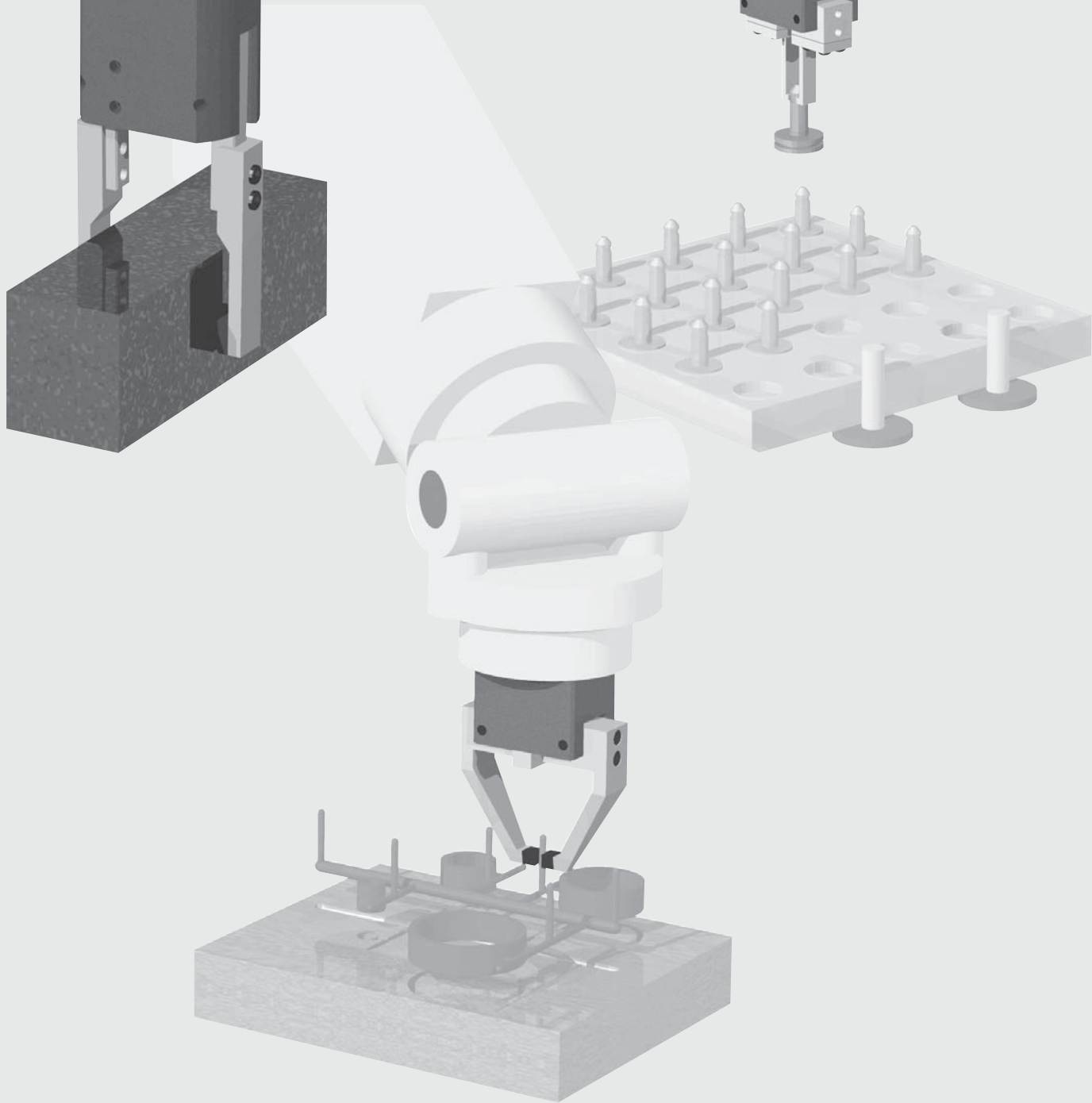


Angular Grippers

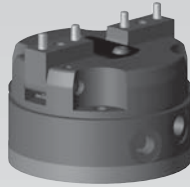


Angular Motion Gripper Product Overview

RUA Series Angular Gripper

- 2-Jaw Angular Gripper
- Spring Assist
- Pneumatic or Hydraulic Operation

Preferred Market: ● Global



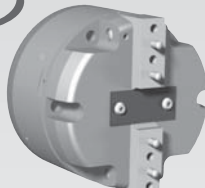
See Page **2.4**



Vulcan Series Hi-Temp Angular Gripper

- Air Top or Lateral Blowing Port
- Optional Kelvar® Boot, metal seals, or stainless heat shield
- Optional stainless steel jaws and hardware

Preferred Market: ▲ NA ◆ SA



See Page **2.16**

RA Series Cam Driven Gripper

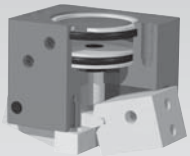
RA-5 & 6 DESIGN ADVANTAGES

- Inexpensive
- Adjustable stroke
- Rugged design

RA-10 DESIGN ADVANTAGES

- Extremely small (1in.) and lightweight (1 oz.)
- Inexpensive

Preferred Market: ● Global



See Page **2.22**

DCT/CT Series *DIRECTCONNECT* 180° Angular Gripper

- 180° of travel (Optional Adjustable Stop)
- Features DIRECTCONNECT mounting (sizes 12-25)
- Sealed design protects internal components from chips and other particulate
- Optional Resistive or Inductive Sensors

Preferred Market: ● Global



See Page **2.32**

DCT-RE/CT-RE Series *DIRECTCONNECT* 180° Failsafe Angular Gripper

- 180° of travel (Optional Adjustable Stop)
- Spring Assist
- Features DIRECTCONNECT mounting (sizes 12-25)
- Sealed design protects internal components from chips and other particulate
- Optional Magneto Resistive or Inductive Sensors

Preferred Market: ● Global



See Page **2.44**

FUA Series Food Gripper



- Designed for direct product contact in the food zone, according to the food industry standard (EN 1672-2)
- All parts are corrosion resistant, non-toxic, non-contaminating, non-porous, non-absorbent and non-reactive
- Stainless steel design resists chemical cleaning procedures

Preferred Market: ● Global



See Page **2.56**

Destaco-Robohand Angular Gripper Product Selector

Model #	Stroke Range	Total Grip Force Range	Maximum Finger Length @ 60 PSI [4 bar]	Actuation Time	Operating Pressure	Environment	Fail-safe Operation	Inductive Sensors	Magnetic Resistive Sensors	Double Acting Cylinder	Single Acting/Spring Return	Double Acting/Spring Assist	Non-Synchronous Option
CYLINDRICAL DESIGN													
RUA-62	•	•	•	•	•	•	•	•	•	•	•	•	•
RUA-82	•	•	•	•	•	•	•	•	•	•	•	•	•
RUA-112	•	•	•	•	•	•	•	•	•	•	•	•	•
RUA-142	•	•	•	•	•	•	•	•	•	•	•	•	•
RUA-162	•	•	•	•	•	•	•	•	•	•	•	•	•
HI-TEMP DESIGN													
VULCAN-112	•	•	•	•	•	•	•	•	•	•	•	•	•
VULCAN-142	•	•	•	•	•	•	•	•	•	•	•	•	•
VULCAN-162	•	•	•	•	•	•	•	•	•	•	•	•	•
CAM DRIVEN DESIGN													
RA-5	•	•	•	•	•	•	•	•	•	•	•	•	•
RA-6	•	•	•	•	•	•	•	•	•	•	•	•	•
RA-10	•	•	•	•	•	•	•	•	•	•	•	•	•
180° DESIGN													
DCT-12	•	•	•	•	•	•	•	•	•	•	•	•	•
DCT-16	•	•	•	•	•	•	•	•	•	•	•	•	•
DCT-20	•	•	•	•	•	•	•	•	•	•	•	•	•
DCT-25	•	•	•	•	•	•	•	•	•	•	•	•	•
CT-32	•	•	•	•	•	•	•	•	•	•	•	•	•
CT-40	•	•	•	•	•	•	•	•	•	•	•	•	•
CT-50	•	•	•	•	•	•	•	•	•	•	•	•	•
180° FAILSAFE DESIGN													
DCT-12-RE	•	•	•	•	•	•	•	•	•	•	•	•	•
DCT-16-RE	•	•	•	•	•	•	•	•	•	•	•	•	•
DCT-20-RE	•	•	•	•	•	•	•	•	•	•	•	•	•
DCT-25-RE	•	•	•	•	•	•	•	•	•	•	•	•	•
CT-32-RE	•	•	•	•	•	•	•	•	•	•	•	•	•
CT-40-RE	•	•	•	•	•	•	•	•	•	•	•	•	•
CT-50-RE	•	•	•	•	•	•	•	•	•	•	•	•	•
FOOD GRIPPER DESIGN													
FUA-63	•	•	•	•	•	•	•	•	•	•	•	•	•