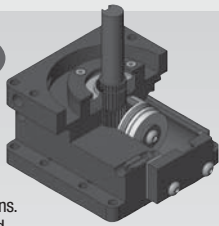


# Rotary Actuators

## DRG DIRECTCONNECT™ Shaft Output

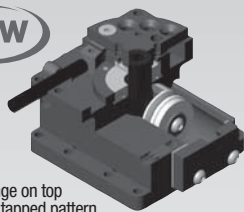


- For use in applications where low precision end stop positioning and backlash are acceptable
- Great for inverter gates, escapements, ejection stations.
- Provides rotational torque for payloads positioned and decelerated by customer supplied shocks and stops.
- End stop positioning for built-in precision end stop positioning and zero backlash see our DRF Rotary Actuator Series.
- Multiple Body Mounting Locations: Tapped and thru flange on top and bottom mounting surfaces, DIRECTCONNECT tapped pattern on bottom surface.

See Page **3.2**

Preferred Market: ● Global

## DRF DIRECTCONNECT™ Flange Output

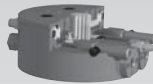


- For use in applications where precision end stop position and zero backlash are required.
- Multiple Mounting Locations: Tapped and thru flange on top and bottom mounting surfaces, DIRECTCONNECT tapped pattern on bottom flange.
- Turntable has DIRECTCONNECT mounting pattern.

See Page **3.14**

Preferred Market: ● Global

## RR-18/28 Light Duty Rack and Pinion

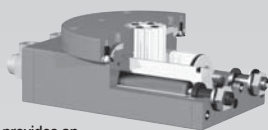


- Designed for small or lightweight
- Low profile and bearing supported turn table provides an extremely compact package for tight space applications
- Payload can be connected directly to the turn table. Eliminates the need for a bearing block.
- Zero backlash, preloaded ball bearings, and slip fit dowel pins make this a very precise and repeatable rotary actuator

See Page **3.26**

Preferred Market: ● Global

## RR-36/46 Medium Duty Rack and Pinion



- Low profile and bearing supported turn table provides an extremely compact package for tight space applications
- Payload can be connected directly to the turn table. Eliminates the need for a bearing block.
- Zero backlash, preloaded ball bearings, and slip fit dowel pins make this a very precise and repeatable rotary actuator
- Air manifold option available
- Midstop position available

See Page **3.32**

Preferred Market: ● Global

## Optional Mid Stop Model RR-36M Model RR-46M

See Page **3.35**

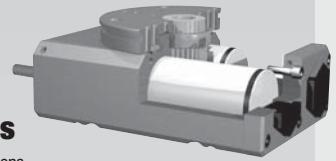
See Page **3.37**

## Optional Rotary Manifold Model RR-36M Model RR-46M

See Page **3.35**

See Page **3.37**

## RR-56/66/76 Heavy Duty Rack and Pinion Rotary Actuator Series



- Designed for large or heavy-duty applications
- Low profile and bearing supported turn table provides an extremely compact package for tight space applications
- Payload can be connected directly to the turn table. Eliminates the need for a bearing block.
- Zero backlash, preloaded ball bearings, and slip fit dowel pins make this a very precise and repeatable rotary actuator
- Air manifold option available
- Midstop position available

See Page **3.42**

Preferred Market: ● Global

## Optional Mid Stop Model RR-56M Model RR-66M Model RR-76M

See Page **3.45**

See Page **3.47**

See Page **3.53**

## Optional Rotary Manifold Model RR-56M Model RR-66M Model RR-76M

See Page **3.45**

See Page **3.47**

See Page **3.53**