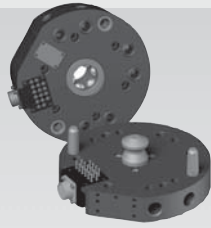


Robotic End Effectors

QC Robot Tool Changer

- Heavy duty, spring loaded locking mechanism prevents separation in the event of loss of air pressure
- Support for optional pneumatic, fluid or electrical interface modules

Preferred Market: ● Global



See Page **6.2**

KA/CH Series Horizontal Compliance

- Compensate for misalignment relative to the robot axis or handling arm
- Pneumatic or hydraulic operation
- Optional tool re-centering or tool release, sensor probe, adaption interface, and Viton® seals for high temperature operation

KA Preferred Market: ▲ NA ◆ SA
CH Preferred Market: ● Global

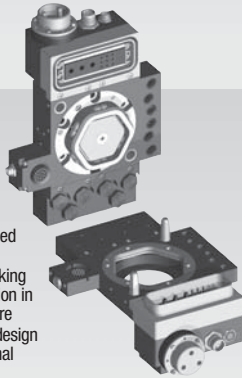


See Page **6.70, 6.80**

RQC Modular Tool Changer

- ISO bolt patterns eliminate need for adapter plates
- Heavy duty, spring loaded locking mechanism prevents separation in the event of loss of air pressure
- Highly configurable modular design accommodates up to 4 optional modular interfaces

Preferred Market: ● Global

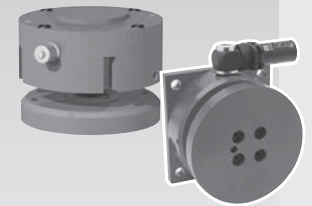


See Page **6.22**

ULS/AU Series Emergency Stop Module

- Detects abnormal forces or shocks and aborts operation
- Provides protection to robot, tooling, and it's surroundings
- Manual re-adjustment is required except for vertical collision

ULS Preferred Market: ▲ NA ◆ SA
AU Preferred Market: ● Global

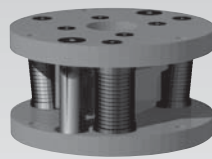


See Page **6.90, 6.100**

RCW Lateral & Angular Alignment Series

- Compensate for inaccuracy or misalignment between parts and machine in both lateral and angular axis
- Increases assembly speed while reducing wear and parts jamming
- Improves quality and reduces costs by avoiding damage of parts

Preferred Market: ▲ NA ◆ SA

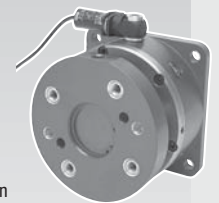


See Page **6.58**

AUR Series Resettable Emergency Stop Module

- Detects abnormal forces or shocks and aborts operation
- Provides protection to robot, tooling, and it's surroundings
- Pneumatically assisted to facilitate repositioning after collision

Preferred Market: ▲ NA ◆ SA



See Page **6.110**