

# Index

## Introduction

- I New Products
- III Table of Contents
- IV Terms and Conditions
- V Terms and Conditions
- VI Applications Form

## Parallel Grippers

- 1.3 Product Overview
- 1.4 Product Selector

## DPE SERIES

- 1.8 DPE Family Page
- 1.10 DPE-200-25
- 1.12 DPE Maintenance

## RPE SERIES

- 1.14 RPE Family Page
- 1.16 RPE-100, -101
- 1.18 RPE Maintenance

## RDH SERIES

- 1.20 RDH Family Page
- 1.22 RDH-1M
- 1.24 RDH-2M
- 1.26 RDH-3M
- 1.28 RDH-4M
- 1.30 RDH-5M
- 1.32 RDH-6M
- 1.34 RDH-7M
- 1.36 RDH-8M
- 1.38 RDH Maintenance

## 2P SERIES

- 1.40 2P Family Page
- 1.42 6002P
- 1.43 6002P-C
- 1.44 8002P
- 1.45 8002P-C
- 1.46 11002P
- 1.47 11002P-C
- 1.48 14002P
- 1.49 14002P-C
- 1.50 16502P
- 1.51 16502P-C
- 1.52 1650PGR
- 1.53 2P Maintenance

## CP SERIES

- 1.58 CP Family Page
- 1.60 CP-1
- 1.61 CP-1-C
- 1.62 CP-2
- 1.63 CP-2-C
- 1.64 CP-3
- 1.65 CP-3-C
- 1.66 CP-4
- 1.67 CP-4-C
- 1.68 CP-5
- 1.69 CP-5-C
- 1.70 CP-6
- 1.71 CP-6-C
- 1.72 CP Maintenance

## DPP SERIES

- 1.74 DPP Family Page
- 1.76 DPP-10M-06
- 1.78 DPP-10M-12
- 1.80 DPP-14M-15
- 1.82 DPP-14M-25
- 1.84 DPP-20M-25
- 1.86 DPP-20M-38
- 1.88 DPP Maintenance

## RPL SERIES

- 1.90 RPL Family Page
- 1.92 RPL-1
- 1.93 RPL-2
- 1.94 RPL-3
- 1.95 RPL-4
- 1.96 RPL Maintenance

## RPLC SERIES

- 1.98 RPLC Family Page
- 1.100 RPLC-1
- 1.101 RPLC-2
- 1.102 RPLC-3
- 1.103 RPLC-4
- 1.104 RPLC Maintenance

## RPM SERIES

- 1.106 RPM Family Page
- 1.108 RPM-1M
- 1.109 RPM-2M
- 1.110 RPM-3M
- 1.111 RPM Maintenance

## RPMC SERIES

- 1.114 RPMC Family Page
- 1.116 RPMC-1M
- 1.117 RPMC-2M
- 1.118 RPMC-3M
- 1.119 RPMC Maintenance

## DPG SERIES

- 1.122 DPG Family Page
- 1.124 DPG-10-1
- 1.126 DPG-10-2
- 1.128 DPG-10-3
- 1.130 DPG-10-4
- 1.132 DPG Maintenance

## DPDS SERIES

- 1.134 DPDS Family Page
- 1.136 DPDS-047
- 1.138 DPDS-056
- 1.140 DPDS-088
- 1.142 DPDS-125
- 1.144 DPDS Maintenance

## DPDL SERIES

- 1.146 DPDL Family Page
- 1.148 DPDL-047
- 1.150 DPDL-056
- 1.152 DPDL-088
- 1.154 DPDL-125
- 1.156 DPDL Maintenance

## DPL SERIES

- 1.158 DPL Family Page
- 1.160 DPL-2520
- 1.161 DPL-2535
- 1.162 DPL-3230
- 1.163 DPL-3250
- 1.164 DPL-4040
- 1.165 DPL-4070
- 1.167 DPL Maintenance

## RP-5&10 SERIES

- 1.170 RP-5&10 Family Page
- 1.172 RP-5
- 1.173 RP-10
- 1.174 RP 5&10 Maintenance

## RP SERIES

- 1.176 RP Family Page
- 1.178 RP-11
- 1.179 RP-12
- 1.180 RP-15
- 1.181 RP-17
- 1.182 RP-18
- 1.183 RP-19
- 1.184 RP Maintenance

## GC SERIES

- 1.186 GC Family Page
- 1.188 GC-25
- 1.189 GC-45
- 1.190 GC-65
- 1.191 GC-85
- 1.192 GC-105
- 1.193 GC Maintenance

## DPW SERIES

- 1.196 DPW Family Page
- 1.198 DPW-250M-1
- 1.190 DPW-250M-2
- 1.192 DPW-375M-1
- 1.194 DPW-375M-2
- 1.196 DPW-500M-1
- 1.198 DPW-500M-2
- 1.200 DPW Maintenance

## RPW SERIES

- 1.214 RPW Family Page
- 1.216 RPW-625-1
- 1.217 RPW-625-2
- 1.218 RPW-750
- 1.219 RPW Maintenance

## RPR "GADIATOR" SERIES

- 1.222 RPR Family Page
- 1.224 RPR-63
- 1.226 RPR Maintenance

## "B" SERIES

- 1.228 BPW Series
- 1.228 BRP Series
- 1.228 BPG Series

## RTH/DTH SERIES

- 1.230 RTH Family Page
- 1.232 RTH/DTH-1M
- 1.234 RTH/DTH-2M
- 1.236 RTH/DTH-3M
- 1.238 RTH/DTH-4M
- 1.240 RTH/DTH-5M
- 1.242 RTH-6M
- 1.244 RTH-7M
- 1.246 RTH-8M
- 1.248 RTH Maintenance

## 3P SERIES

- 1.252 2P Family Page
- 1.254 6003P
- 1.255 6003P-C
- 1.256 8003P
- 1.257 8003P-C
- 1.258 11003P
- 1.259 11003P-C
- 1.260 14003P
- 1.261 14003P-C
- 1.262 16503P
- 1.263 16503P-C
- 1.264 Options/Accessories

## PPC SERIES

- 1.268 PPC Family Page
- 1.270 PPC-12
- 1.271 PPC-12-C
- 1.272 PPC-25
- 1.273 PPC-25-C
- 1.274 PPC-34
- 1.275 PPC-34-C
- 1.276 PPC Sensors
- 1.277 PPC Maintenance

## Angular Grippers

- 2.2 Product Overview
- 2.3 Product Selector

## RUA/DUA SERIES

- 2.4 RUA/DUA Family Page
- 2.6 RUA/DUA-62M
- 2.8 RUA/DUA-82M
- 2.10 RUA/DUA-112M
- 2.12 RUA-142M
- 2.14 RUA-162M
- 2.16 VULCAN-112M
- 2.17 VULCAN-142M
- 2.18 VULCAN-162M
- 2.19 RUA/DUA/VULCAN Maintenance

## RA 5-10 SERIES

- 2.22 RA-5, 6 & 10 Family Page
- 2.24 RA-5
- 2.25 RA-6
- 2.26 RA-5 & 6 Maintenance
- 2.28 RA-10
- 2.29 RA-10 Maintenance

## DCT/CT SERIES

- 2.32 DCT/CT Family Page
- 2.34 DCT-12
- 2.35 DCT-16
- 2.36 DCT-20
- 2.37 DCT-25
- 2.38 CT-32
- 2.39 CT-40
- 2.40 CT-50
- 2.41 DCT/CT Maintenance

## DCT-RE/CT-RE SERIES

- 2.44 DCT-RE/CT-RE Family Page
- 2.46 DCT-12-RE
- 2.47 DCT-16-RE
- 2.48 DCT-20-RE
- 2.49 DCT-25-RE
- 2.50 CT-32-RE
- 2.51 CT-40-RE
- 2.52 CT-50-RE
- 2.53 DCT-RE/CT-RE Maintenance

## FUA SERIES

- 2.56 FUA Family Page
- 2.57 FUA-63M

## Rotary Motion Actuators

- 3.1 Product Overview

## DRG SERIES

- 3.2 DRG Family Page
- 3.4 DRG-075
- 3.6 DRG-094
- 3.8 DRG-106
- 3.10 DRG-131
- 3.12 DRG Maintenance

## DRF SERIES

- 3.14 DRF Family Page
- 3.16 DRF-075
- 3.18 DRF-094
- 3.20 DRF-106
- 3.22 DRF-131
- 3.24 DRF Maintenance

(con't on next page)

**RR SERIES**

- 3.26 RR-18 & 28 Family Page
- 3.28 RR-18
- 3.29 RR-28
- 3.30 RR-18 & 28 Maintenance
- 3.32 RR-36 & 46 Family Page
- 3.34 RR-36
- 3.35 RR-36 Options
- 3.36 RR-46
- 3.37 RR-46 Options
- 3.38 RR-36 & 46 Maintenance
- 3.40 RR-36 & 46 Opt. Maintenance
- 3.42 RR-56, 66 & 76 Family Page
- 3.44 RR-56
- 3.45 RR-56 Options
- 3.46 RR-66
- 3.47 RR-66 Options
- 3.48 RR-56 & 66 Maintenance
- 3.50 RR-56 & 66 Opt. Maintenance
- 3.52 RR-76
- 3.53 RR-76 Options
- 3.54 RR-76 Maintenance
- 3.56 RR-76 Options Maintenance

**Linear Slides**

- 4.1 Product Overview
- 4.2 Product Selector

**DIRECTCONNECT SERIES**

- 4.4 DIRECTCONNECT Overview
- 4.6 Application Concepts

**DLB-B&L SERIES**

- 4.8 DLB-B&L Family Page
- 4.10 DLB-10-16B
- 4.12 DLB-20-25B
- 4.14 DLB-10-16L
- 4.16 DLB-20-25L
- 4.18 DLB-B&L Maintenance

**DLB-TANRU SERIES**

- 4.20 DLB-TANRU Family Page
- 4.22 DLB-10-16TA
- 4.24 DLB-20-25TA
- 4.26 DLB-10-16NU
- 4.28 DLB-20-25NRU
- 4.30 DLB-TANRU Maintenance

**DLT-B SERIES**

- 4.32 DLT-B Family Page
- 4.34 DLT-06-08B
- 4.36 DLT-10-16B
- 4.38 DLT-20-25B

**DLT-E&L SERIES**

- 4.40 DLT-E&L Family Page
- 4.42 DLT-06-08E
- 4.44 DLT-10-16E
- 4.46 DLT-20-25E
- 4.48 DLT-06-08L
- 4.50 DLT-10-16L
- 4.52 DLT-20-25L
- 4.54 DLT-B,E,L Maintenance

**DLT-TANRU SERIES**

- 4.56 DLT-TANRU Family Page
- 4.58 DLT-06-08TU
- 4.60 DLT-10-16TA
- 4.62 DLT-20-25TA
- 4.64 DLT-10-16NU
- 4.66 DLT-20-25NRU
- 4.68 DLT-TANRU Maintenance

**DLM SERIES**

- 4.70 DLM Family Page
- 4.72 DLM -07M-12
- 4.74 DLM -07M-25
- 4.76 DLM -07M-38
- 4.78 DLM -07M-50
- 4.80 DLM -09M-25
- 4.82 DLM -09M-50
- 4.84 DLM -12M-25
- 4.86 DLM -12M-50
- 4.88 DLM Maintenance

**Feed Escapements**

- 5.1 Product Overview

**RFE SERIES**

- 5.2 RFE Family Page
- 5.4 RFE-11
- 5.5 RFE-12
- 5.6 RFE-13
- 5.7 RFE Maintenance

**Robotic Tool Changers & Compliance/Overload Devices**

- 6.1 Product Overview

**QC SERIES**

- 6.2 QC Family Page
- 6.4 QC-30
- 6.5 TP-30
- 6.6 QC-60
- 6.7 TP-60
- 6.8 QC-60 10-Port
- 6.9 TP-60 10-Port
- 6.10 QC-150
- 6.11 TP-150
- 6.12 QC Modules
- 6.18 QC Maintenance
- 6.20 QC Cross-Reference

**RQC SERIES**

- 6.22 RQC Family Page
- 6.24 RQC-200
- 6.26 RTP-200
- 6.28 RQC-400
- 6.30 RTP-400
- 6.32 RQC-800
- 6.34 RTP-800
- 6.36 RQC-1200
- 6.38 RTP-1200
- 6.40 RQC Options/Modules
- 6.54 RQC Maintenance
- 6.56 Tool Changer Terminology

**RCW SERIES**

- 6.58 RCW Family Page
- 6.60 RCW-50-3
- 6.61 RCW-80-3
- 6.62 RCW-100-4
- 6.63 RCW-100-6
- 6.64 RCW-125-6
- 6.65 RCW-160-6
- 6.66 RCW-160-8
- 6.67 RCW-200-12
- 6.68 RCW-300-12
- 6.69 RCW Maintenance

**KA SERIES**

- 6.70 KA Family Page
- 6.72 KA-80
- 6.73 KA-100
- 6.74 KA-125
- 6.75 KA-160
- 6.76 KA-200
- 6.77 KA-300
- 6.78 KA Maintenance

**CH SERIES**

- 6.80 CH Family Page
- 6.82 CH-50
- 6.83 CH-80
- 6.84 CH-110
- 6.85 CH-140
- 6.86 CH-165
- 6.87 CH Maintenance

**ULS SERIES**

- 6.90 ULS Family Page
- 6.92 ULS-80
- 6.93 ULS-100
- 6.94 ULS-125
- 6.95 ULS-160
- 6.96 ULS-200
- 6.97 ULS-250
- 6.98 ULS-300
- 6.99 ULS Maintenance

**AU SERIES**

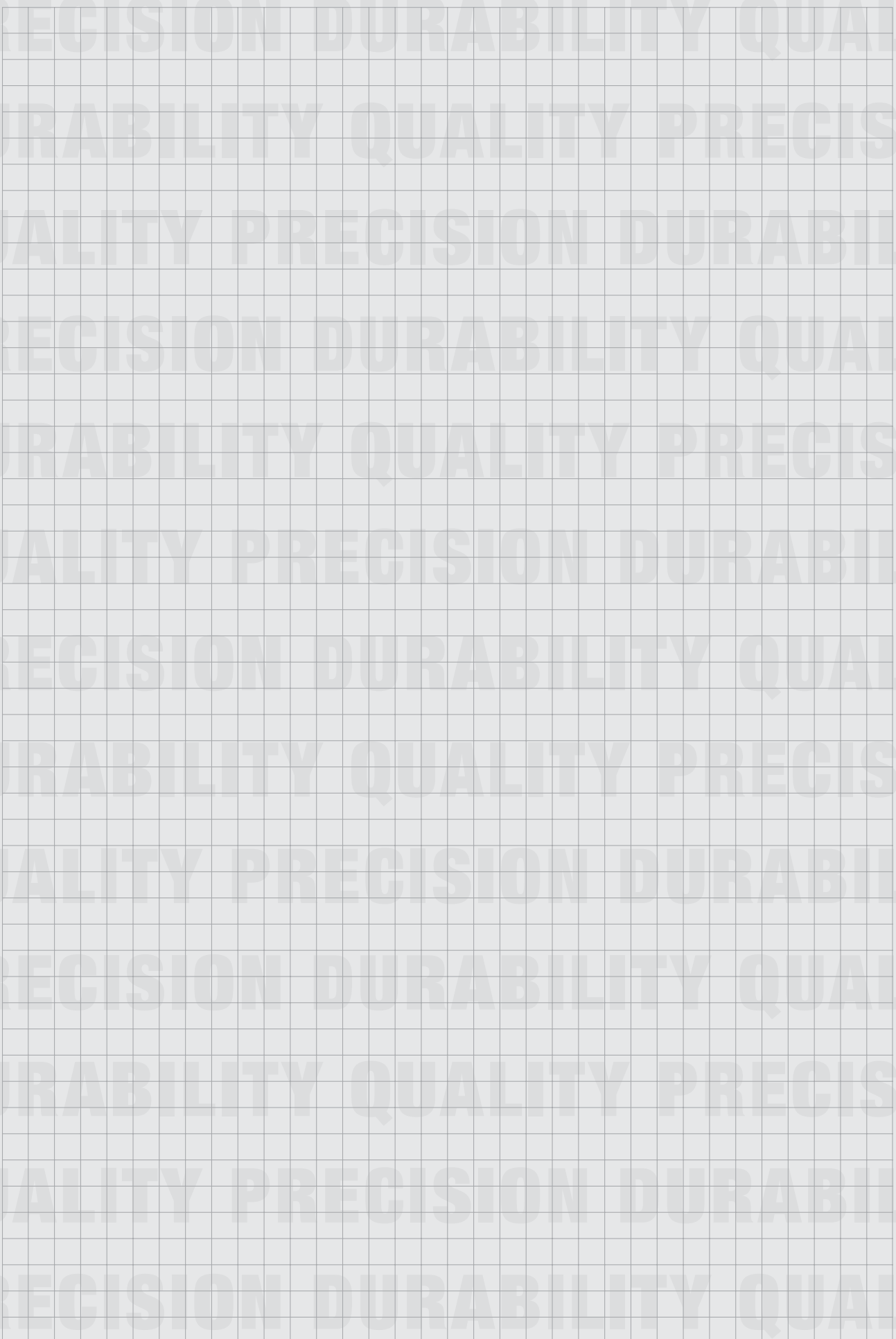
- 6.100 AU Family Page
- 6.102 AU-60
- 6.103 AU-80
- 6.104 AU-110
- 6.105 AU-140
- 6.106 AU-165
- 6.107 AU Maintenance

**AU-R SERIES**

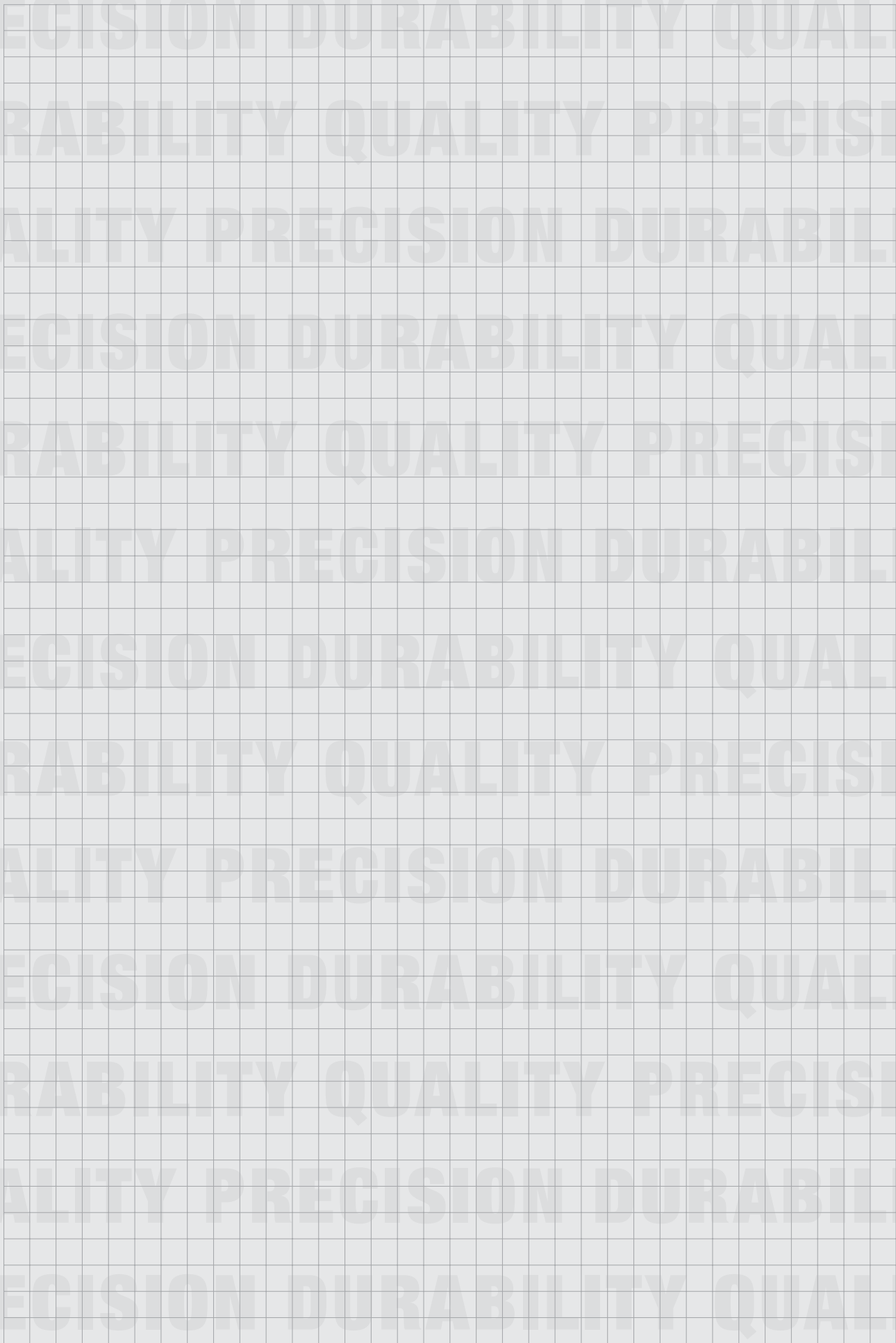
- 6.110 AU-R Family Page
- 6.112 AU-110R
- 6.113 AU-140R
- 6.114 AU-R Maintenance



# DESIGN NOTES



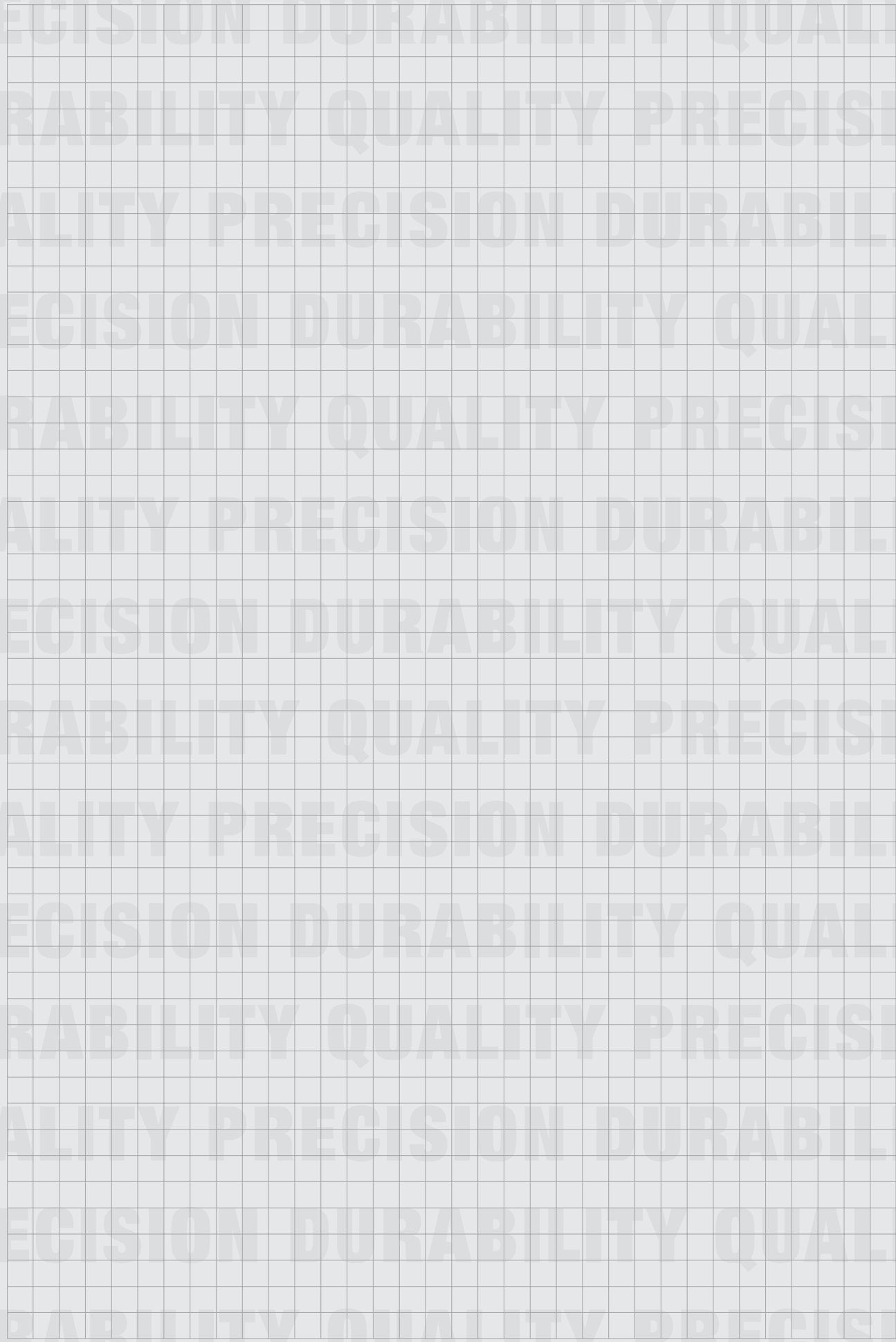
# DESIGN NOTES



INDEX  
7.4



# DESIGN NOTES



INDEX  
7.6

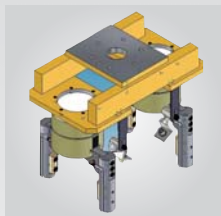
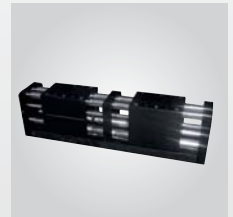
# Engineering Resources

## from DE-STA-CO Robohand

### SPECIALS

- Receive custom solutions for your unique applications with our Custom Product program
- Speak directly with one of our highly trained engineers that understands your specific needs
- Custom capabilities range, from adding a simple dowel hole to developing a solution from the beginning
- A minimum order quantity is not required, and for most special requests, receive a quote within 24 hours
- DE-STA-CO Robohand offers a level of expertise unmatched in the industry

- All custom solutions are priced competitively and delivered with complete CAD files
- Receive a unique part number for complete convenience of future orders
- Nearly all custom solutions will be delivered within two to five weeks of your request



### 3D LIBRARY & CAD CONFIGURATOR

- Receive online viewing of both automation and workholding products
- Compatible with virtually any CAD language in many output formats
- Graphically configure components with the sizes, features and options you require

- Rotate, zoom and pan your models online
- Experience extremely user-friendly digital content
- Receive high-quality, native CAD data, including a DE-STA-CO part number



www.destaco.com 1.888.DESTACO



Precisely positioning our customers for productivity.

# Fax



**Your data**

Company _____	Company _____
Phone _____	Dept. _____
Fax _____	Name _____
Email _____	Phone _____
	Fax _____
	Email _____
	Address _____
	_____

# Order

Your order code: \_\_\_\_\_

Model no.	Qty	Description	Unitprice	Total

# Catalog Order

	Quantity
<b>Clamping Technology</b>	
<b>Automation Solutions</b>	
<b>Grinders and Burs</b>	
<b>End Effector Visual Selection Guide</b>	

\_\_\_\_\_  
City, Date

\_\_\_\_\_  
Signature

DE-STA-CO  
Europe GmbH  
Hiroshimastraße 2  
D-61440 Oberursel

europa@destaco.com  
**www.destaco.com**