

DE-STA-CO Pneumatic Clamps use air-actuated cylinders to operate the clamping action. They are ideal for quick and repetitive production operations, and yet are portable and economical to use on short run jobs with temporary fixturing

	Series	Section. Page	Max. Holding Capacity N[lbf.]							Max. Exerting Force at 5bar[72PSI] N[lbf.]						
			0 to 1000 [0 to 225]	1000 to 2000 [225 to 450]	2000 to 3000 [450 to 675]	3000 to 5000 [675 to 1125]	5000 to 7000 [1125 to 1575]	7000 to 10000 [1575 to 2250]	10000+ [2250+]	0 to 1000 [0 to 225]	1000 to 2000 [225 to 450]	2000 to 3000 [450 to 675]	3000 to 4000 [675 to 900]	4000 to 5000 [900 to 1125]	5000 to 6000 [1125 to 1350]	6000 to 8000 [1350 to 1800]
	812	10.3	■							■						
	802	10.5	■								■					
	807	10.7			■						■					
	810	10.9				■						■				
	846	10.11				■						■				
	847	10.15				■							■			
	8007	10.13				■						■				
	858	10.17							■							■
	8021	10.19		■						■						
	8071	10.19		■							■					
	8101	10.19				■						■				
	817	10.21		■							■					
	827	10.21				■						■				
	868	10.23								■						■
	816	10.25	■								■					
	803	10.26			■							■				
	8031	10.27						■					■			
	830	10.29							■				■			
	850	10.30								■					■	
	800	10.31									■					
	1200	10.31									■					



Overall Height mm [inch]		Overall Length mm [inch]		Overall Width mm [inch]		Suitable Application Area				Arm Style		Service Environment													
0 to 50 [0 to 1.97]	50 to 75 [1.97 to 2.95]	75 to 100 [2.95 to 3.94]	100 to 125 [3.94 to 4.92]	125 to 150 [4.92 to 5.91]	150 to 175 [5.91 to 6.89]	175 to 200 [6.89 to 7.87]	200 to 225 [7.87 to 8.86]	225 to 250 [8.86 to 9.84]	250 to 300 [9.84 to 11.81]	300 to 400 [11.81 to 15.75]	400+ [15.75+]	20 to 40 [0.78 to 1.57]	40 to 60 [1.57 to 2.36]	60 to 80 [2.36 to 3.15]	80 to 100 [3.15 to 3.94]	100 to 120 [3.94 to 4.72]	Welding	Assembly	Light Machining	Duty Cycle	Accommodates Workpiece Variation	U-Bar Version	Solid Arm Version	Normal	Harsh/Dirty
█												█					●	●	●	●		✓		✓	
	█												█				○	●	●	○		✓		✓	
		█											█				○	●	○	○		✓	✓	✓	
			█										█				○	●	○	○		✓	✓	✓	
				█									█				●	●	○	○		✓	✓	✓	
					█								█				●	●	○	○		✓	✓	✓	
						█							█				○	○	○	○		✓	✓	✓	
							█						█				○	○	○	○		✓	✓	✓	
								█					█				○	○	○	○		✓	✓	✓	
									█				█				○	○	○	○		✓	✓	✓	
										█			█				○	○	○	○	✓				✓
											█		█				○	○	○	○	✓				✓

● Excellent/High ○ Fair/Medium ● Poor/Low ⊗ Not Recommended



## Series 812 Product Overview

## Features:

- Smallest of the pneumatic hold down series
- Pneumatic version of Model 201-U

## Applications:

- Assembly
- Welding

## Also Available:

See page 8.1 for spindle accessories  
See page 13.1 for sensing options  
High temperature version available  
Upon Request as Model 812-**U-HT**

## 812-U



## Series 812 Technical Information, Holding Capacities

Model	Maximum Holding Capacity		Max. Exerting Force @ 5bar [72PSI]		Weight	Port Size	Spindle Accessory (Supplied)
	Inner	Outer	Inner	Outer			
812-U	[100 lbf] 440 N	[55 lbf] 245 N	[136 lbf] 613 N	[92 lbf] 413 N	[0.46lb] 0,21kg	M5	305208-M

See Technical Appendix Section for details.

**Max. Cylinder Pressure:** 17bar [250psig]\*

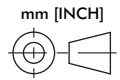
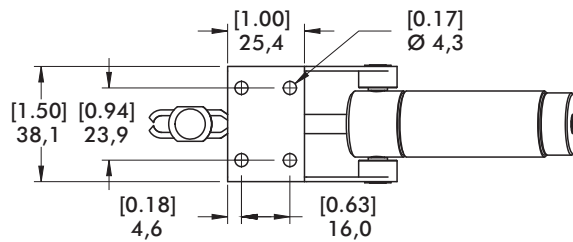
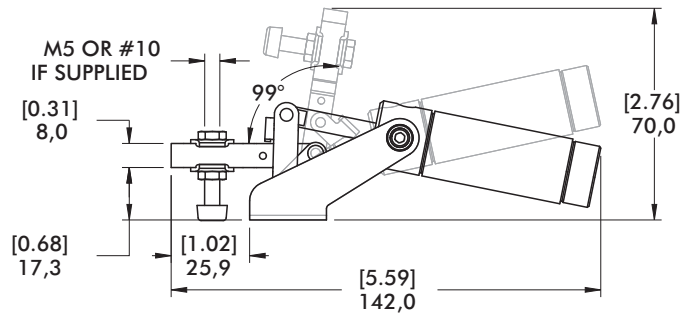
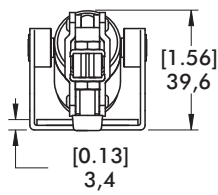
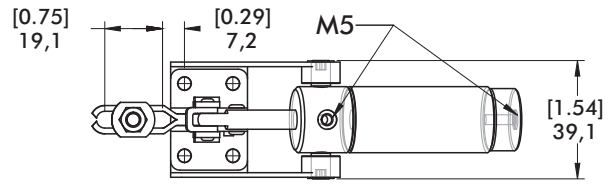
**Max. Operating Temp:** -23°C to 74°C [-10°F to 165°F]

**Optional Sensors:** 810156, 810158

\*In no case should the inlet pressure be high enough to create an exerting force that exceed's the clamps' holding capacity.

Series 812 Standard Clamp Dimensions

812-U



Series 802 Product Overview

Features:

- Pneumatic version of Model 202-U
- Sensor ready for T-slot or round sensors

Applications:

- Assembly
- Welding

Also Available:

See page 8.1 for spindle accessories  
 See page 13.1 for sensing options  
 High temperature version available  
 Upon Request, add **-HT** to model number. Example: 802-U-**HT**

- ▲ 802-U
- 802-UE



Series 802 Technical Information, Holding Capacities

Model	Maximum Holding Capacity		Max. Exerting Force @ 5bar [72PSI]		Weight	Port Size	Spindle Accessory (Supplied)
	Inner	Outer	Inner	Outer			
▲ 802-U	[200 lbf] 890 N	[110 lbf] 490 N	[450 lbf] 2010 N	[234 lbf] 1045 N	[1.60lb] 0,73kg	1/8 NPT G-1/8	202208-M
■ 802-UE							

See Technical Appendix Section for details. Preferred Market: ▲ NA ■ Europe/SA ● Global

**Max Cylinder Pressure:** 10bar [145psig]\*  
**Max Operating Temp:** -10°C to 90°C [-14°F to 194°F]  
**Replacement Seal Kit:** 802450-32-1-00

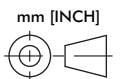
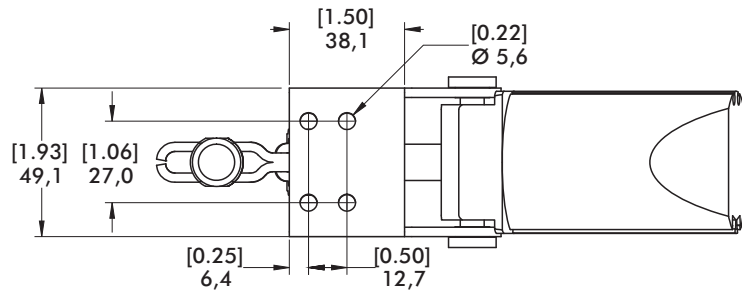
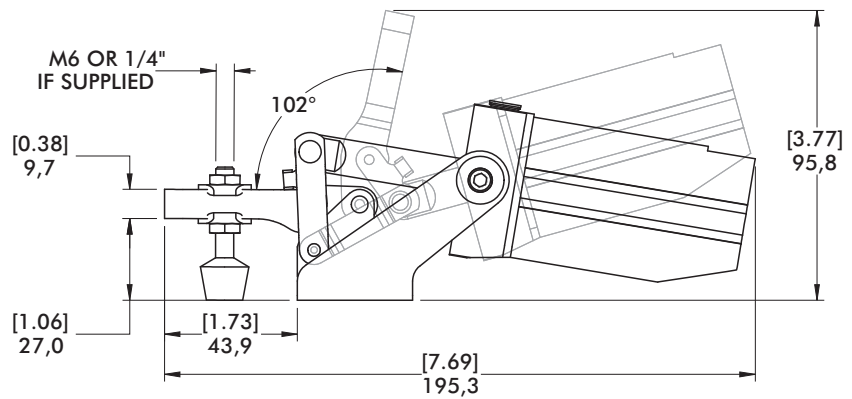
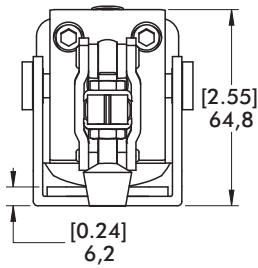
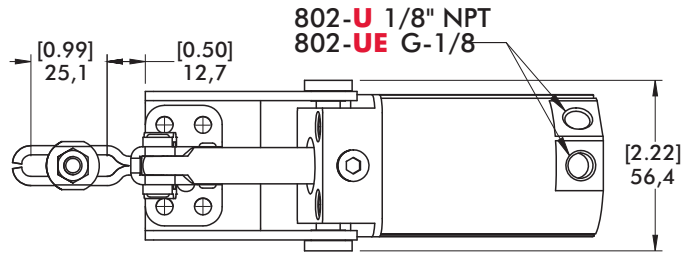
\*In no case should the inlet pressure be high enough to create an exerting force that exceed's the clamps' holding capacity.

Sensor Accessories	Item Number
Round Reed Switch with Quick Disconnect	810169
T-slot Reed Switch with Quick Disconnect	8EA-109-1
Quick Disconnect 2M Extension Cable	CABL-010
Quick Disconnect 5M Extension Cable	CABL-013

See Pneumatic Accessories section for more options

Series **802** Standard Clamp Dimensions  
-U/-UE

▲ 802-**U**  
■ 802-**UE**



Series 807 Product Overview

Features:

- Pneumatic version of Series 207 manual clamps
- Sensor ready for round or T-slot sensors.
- Built-in flow restriction eliminates need for external flow controls

Applications:

- Assembly
- Welding

Also Available:

See page 8.1 for spindle accessories  
 See page 13.1 for sensing options  
 High temperature version available  
 Upon Request, add **-HT** to model number. Example: 807-U-**HT**

▲ 807-U  
 ■ 807-UE



▲ 807-S  
 ■ 807-SE



Series 807 Technical Information, Holding Capacities

Model	Maximum Holding Capacity		Max. Exerting Force @ 5bar [72PSI]		Weight	Port Size	Spindle Accessory (Supplied)
	Inner	Outer	Inner	Outer			
▲ 807-U	[375 lbf]	[275 lbf]	[576 lbf]	[297 lbf]	[1.66lb] 0,75kg	1/8 NPT	507107 (Flanged Washers)
■ 807-UE	1670 N	1220 N	2573 N	1327 N		G-1/8	
▲ 807-S	[500 lbf]	[260 lbf]	[540 lbf]	[180 lbf]	0,75kg	1/8 NPT	207107 (Bolt Retainer)
■ 807-SE	2220 N	1160 N	2412 N	804 N		G-1/8	

See Technical Appendix Section for details. Preferred Market: ▲ NA ■ Europe/SA ● Global

**Max Cylinder Pressure:** 10bar [145psig]\*  
**Max Operating Temp:** -10°C to 90°C [-14°F to 194°F]  
**Replacement Seal Kit:** 802450-32-1-00

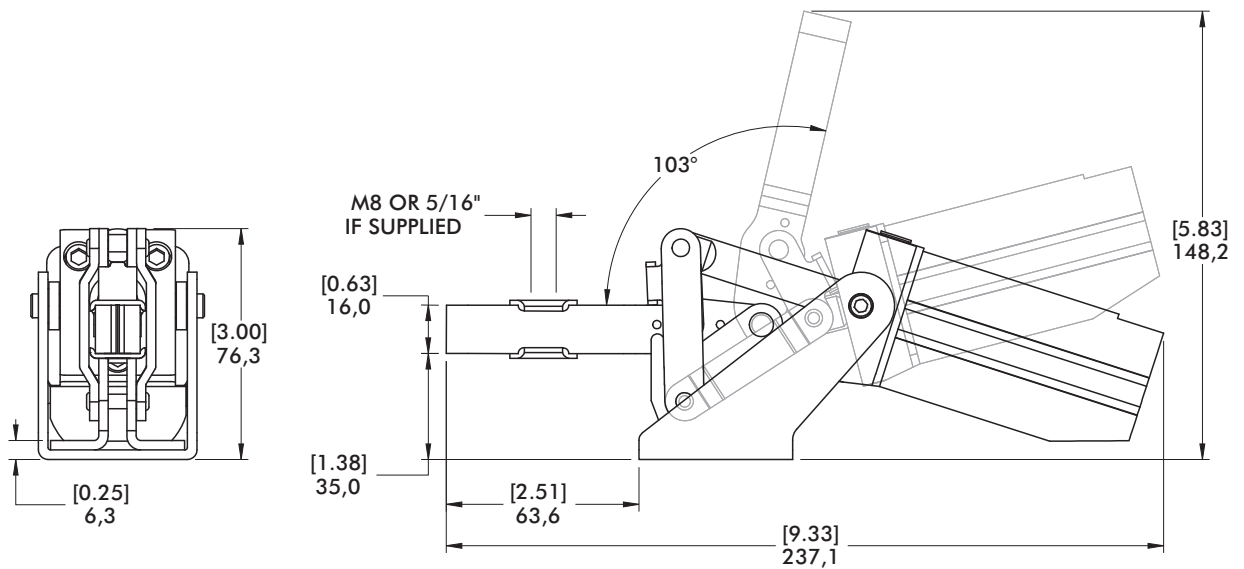
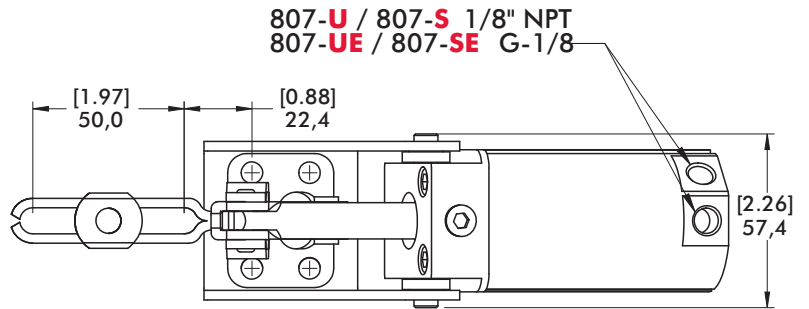
\*In no case should the inlet pressure be high enough to create an exerting force that exceed's the clamps' holding capacity.

Sensor Accessories	Item Number
Round Reed Switch with Quick Disconnect	810169
T-slot Reed Switch with Quick Disconnect	8EA-109-1
Quick Disconnect 2M Extension Cable	CABL-010
Quick Disconnect 5M Extension Cable	CABL-013

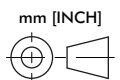
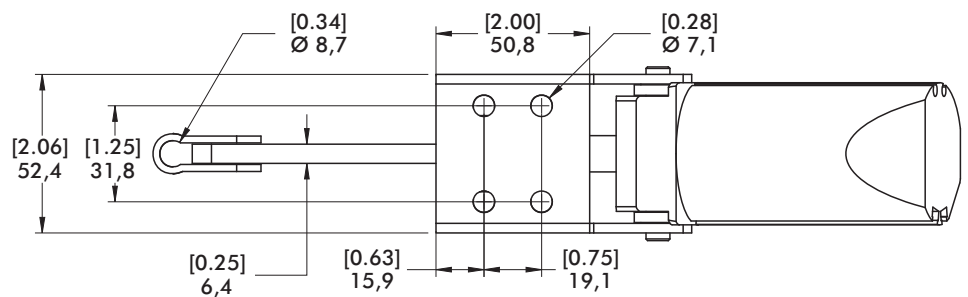
See Pneumatic Accessories section for more options

Series 807 Standard Clamp Dimensions  
-U/-UE/-S/-SE

▲ 807-U  
■ 807-UE



▲ 807-S  
■ 807-SE



Series 810 Product Overview

Features:

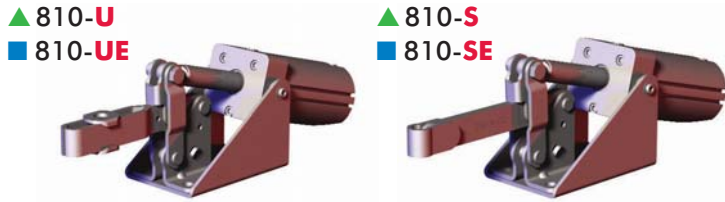
- Pneumatic version of Series 210 manual clamps
- Sensor ready for round or T-slot style sensors
- Built-in flow restriction eliminates need for external flow controls

Applications:

- Assembly
- Welding

Also Available:

See page 8.1 for spindle accessories  
 See page 13.1 for sensing options  
 High temperature version available  
 Upon Request, add **-HT** to model number. Example: 810-U-**HT**



Series 810 Technical Information, Holding Capacities

Model	Maximum Holding Capacity		Max. Exerting Force @ 5bar [72PSI]		Weight	Port Size	Spindle Accessory (Supplied)
	Inner	Outer	Inner	Outer			
▲ 810-U	[600 lbf]	[290 lbf]	[856 lbf]			1/8 NPT	507107
■ 810-UE	2670 N	1290 N	3834 N	[407 lbf]	[4.07lb]	G-1/8	(Flanged Washers)
▲ 810-S	[750 lbf]	[500 lbf]	[702 lbf]		1,85kg	1/8 NPT	207107
■ 810-SE	3340 N	2220 N	3143 N			G-1/8	(Bolt Retainer)

See Technical Appendix Section for details. Preferred Market: ▲ NA ■ Europe/SA ● Global

**Max Cylinder Pressure:** 10bar [145psig]\*

**Replacement Seal Kit:** 810450-40-1-00

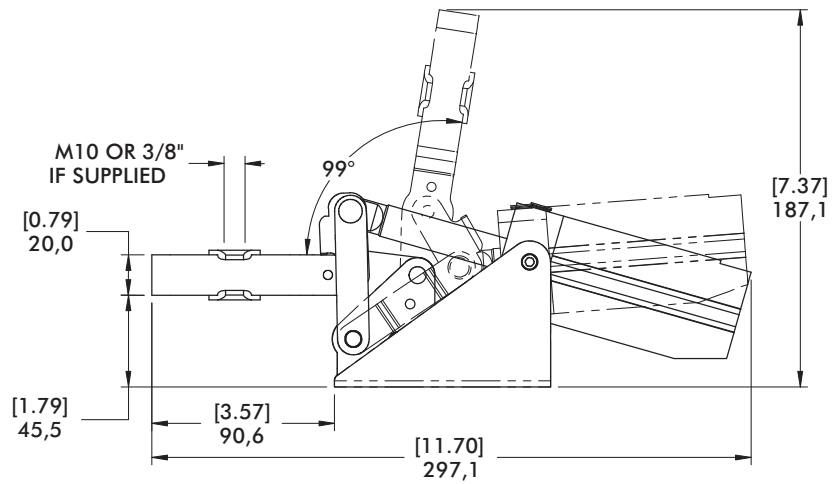
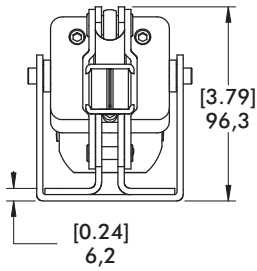
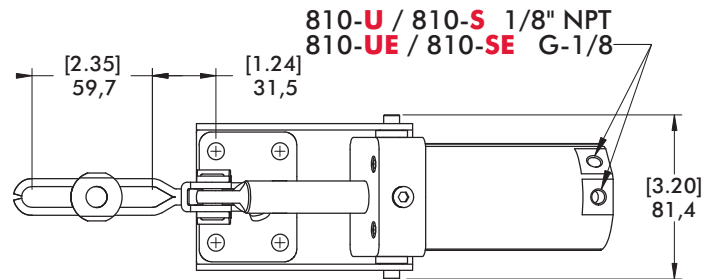
\*In no case should the inlet pressure be high enough to create an exerting force that exceed's the clamps' holding capacity.

Sensor Accessories	Item Number
Round Reed Switch with Quick Disconnect	810169
T-slot Reed Switch with Quick Disconnect	8EA-109-1
Quick Disconnect 2M Extension Cable	CABL-010
Quick Disconnect 5M Extension Cable	CABL-013

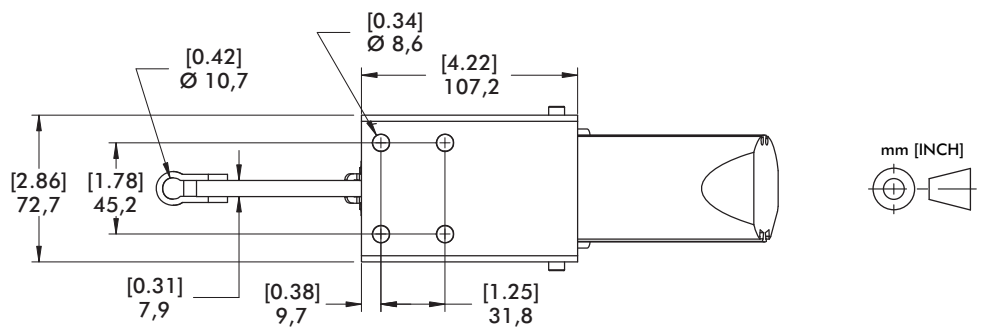
See Pneumatic Accessories section for more options

Series 810 Standard Clamp Dimensions  
-U/-UE/-S/-SE

▲ 810-U  
■ 810-UE



▲ 810-S  
■ 810-SE





## Series 846 Product Overview

## Features:

- Similar in size to 807 but with higher holding capacity
- Large, solid clamping arm is easily modified to suit application requirements
- Sensor ready for round or T-slot style sensors

## Applications:

- Assembly
- Welding

## Also Available:

See page 13.1 for sensing options  
High temperature version available  
Upon Request, add **-HT** to model number. Example: 846-U-**HT**

846



## Series 846 Technical Information, Holding Capacities

Model	Maximum Holding Capacity		Max. Exerting Force @ 5bar [72PSI]		Weight	Port Size
	Inner	Outer	Inner	Outer		
846	[750 lbf] 3340 N	[520 lbf] 2310 N	[786 lbf] 3520 N	[491 lbf] 2200 N	[4.18lb] 1,90kg	1/8 NPT

See Technical Appendix Section for details.

**Max Cylinder Pressure:** 10bar [145psig]\*

**Max Operating Temp:** -10°C to 90°C [-14°F to 194°F]

**Replacement Seal Kit:** 810450-40-1-00

\*In no case should the inlet pressure be high enough to create an exerting force that exceed's the clamps' holding capacity.

## Sensor Accessories

- Round Reed Switch with Quick Disconnect
- T-slot Reed Switch with Quick Disconnect
- Quick Disconnect 2M Extension Cable
- Quick Disconnect 5M Extension Cable

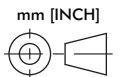
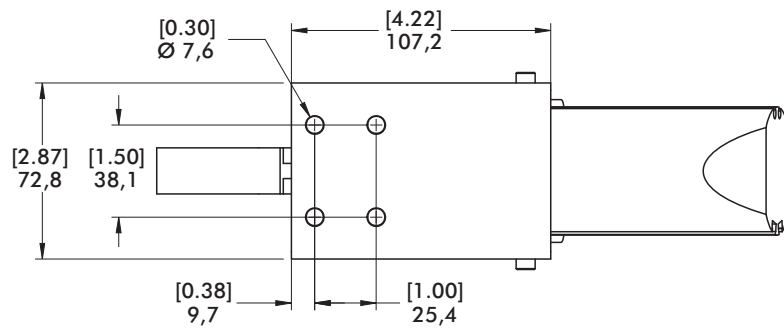
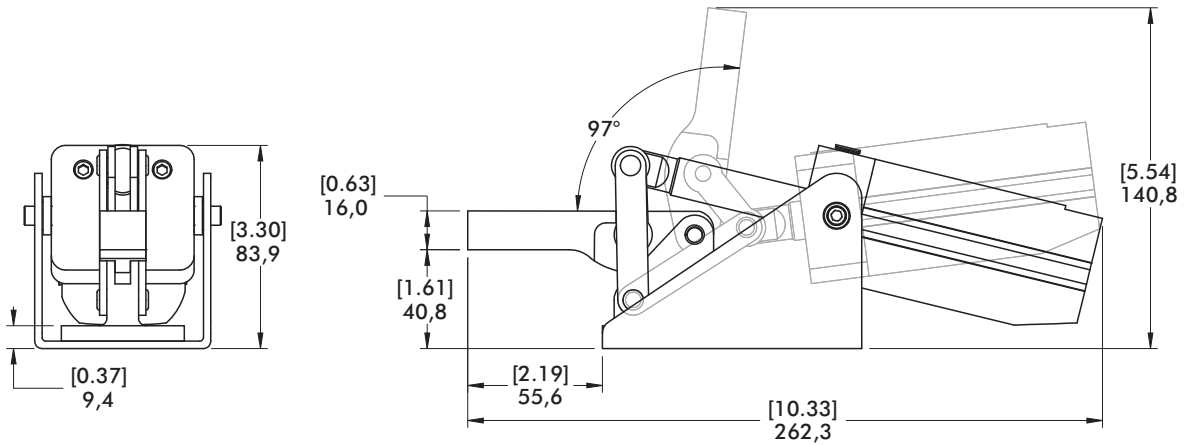
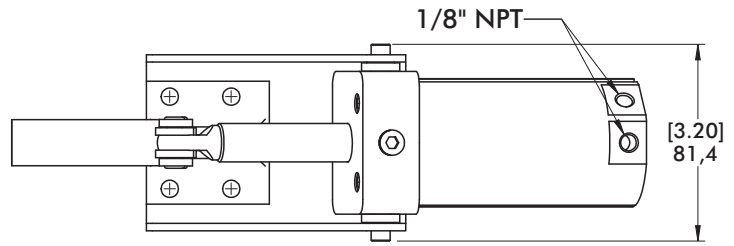
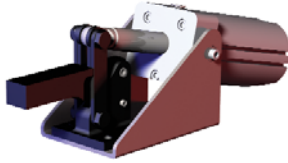
## Item Number

- 810169
- 8EA-109-1
- CABL-010
- CABL-013

See Pneumatic Accessories section for more options

Series 846 Standard Clamp Dimensions

846



Series 8007 Product Overview

Features:

- Hardened pins and bushing at all pivot points for long life cycle
- Solid clamping bar may be modified to suit application requirements
- Sensor ready for round or T-slot style sensors

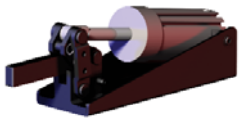
Applications:

- Assembly
- Welding

Also Available:

See page 13.1 for sensing options

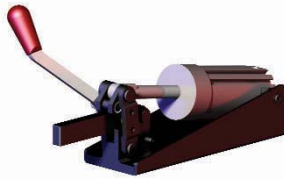
8007-E



8007-EHL



8007-EHR



Series 8007 Technical Information, Holding Capacities

Model	Maximum Holding Capacity		Max. Exerting Force @ 5bar [72PSI]		Weight	Port Size
	Inner	Outer	Inner	Outer		
8007-E					1,6kg [3.53lb]	G-1/8
8007-EHL	[830 lbf] 3700 N	[405 lbf] 1800 N	[606 lbf] 2700 N	[405 lbf] 1800 N	1,7kg [3.75lb]	
8007-EHR						

See Technical Appendix Section for details.

**Max Cylinder Pressure:** 10bar [145psig]\*

**Max Operating Temp:** -10°C to 90°C [-14°F to 194°F]

\*In no case should the inlet pressure be high enough to create an exerting force that exceed's the clamps' holding capacity.

Sensor Accessories

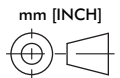
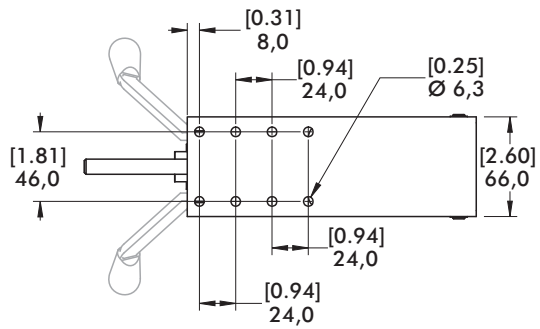
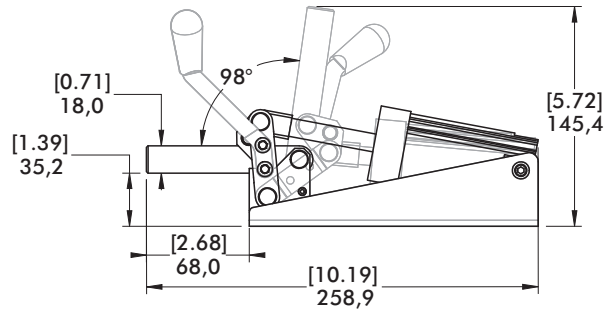
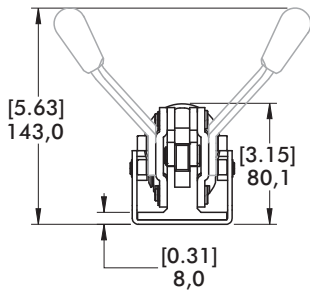
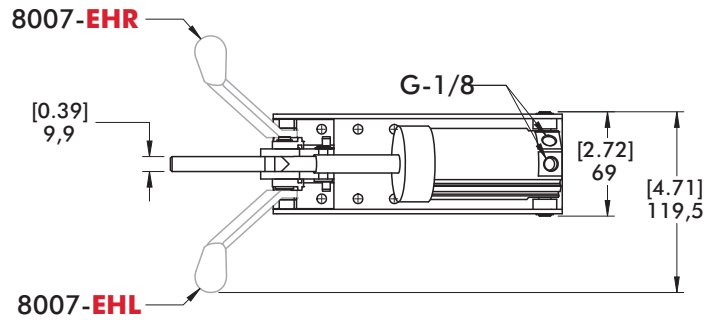
- Round Reed Switch with Quick Disconnect
- T-slot Reed Switch with Quick Disconnect
- Quick Disconnect 2M Extension Cable
- Quick Disconnect 5M Extension Cable

Item Number

- 810169
- 8EA-109-1
- CABL-010
- CABL-013

See Pneumatic Accessories section for more options

Series 8007 Standard Clamp Dimensions  
-E/-EHL/-EHR



Series 847 Product Overview

Features:

- Pneumatic version of Series 247 manual clamps
- Switch ready for Ø4mm or 6,5mmX5mm sensors
- Built-in flow restriction eliminates need for external flow controls

Applications:

- Assembly
- Welding

Also Available:

See page 8.1 for spindle accessories  
 See page 13.1 for sensing options  
 High temperature version available  
 Upon Request, add **-HT** to model number. Example: 847-U-**HT**

847-U



847-S



Series 847 Technical Information, Holding Capacities

Model	Maximum Holding Capacity		Max. Exerting Force @ 5bar [72PSI]		Weight	Port Size	Spindle Accessory (Supplied)
	Inner	Outer	Inner	Outer			
847-U	[1000 lbf] 4450 N	[480 lbf] 2135 N	[948 lbf] 4248 N	[450 lbf] 2018 N	[8.93lb] 4,05kg	1/4 NPT	247109 (Flanged Washers)
847-S	[1000 lbf] 4450 N	[650 lbf] 2890 N		[426 lbf] 1912 N		1/4 NPT	247110 (Bolt Retainer)

See Technical Appendix Section for details.

**Max Cylinder Pressure:** 10bar [145psig]\*

**Max Operating Temp:** -10°C to 90°C [-14°F to 194°F]

**Replacement Seal Kit:** 847450-50-1-00

\*In no case should the inlet pressure be high enough to create an exerting force that exceed's the clamps' holding capacity.

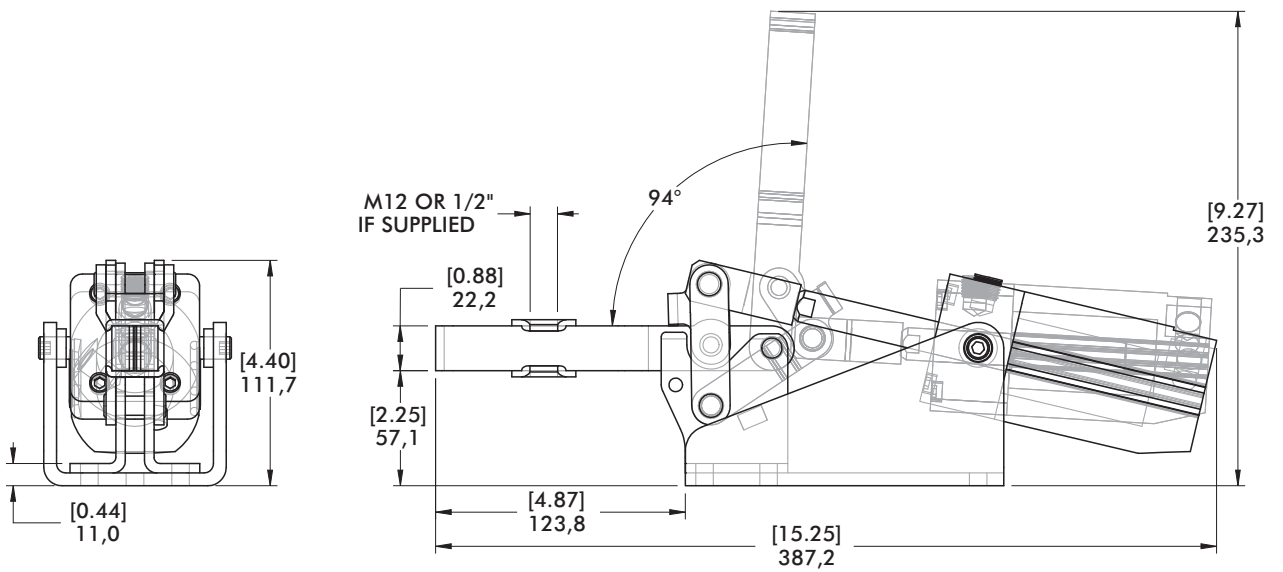
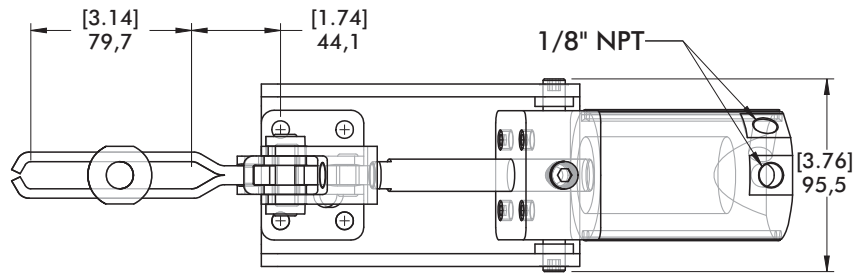
**Sensor Accessories**

	Item Number
Round Reed Switch with Quick Disconnect	810169
T-slot Reed Switch with Quick Disconnect	8EA-109-1
Quick Disconnect 2M Extension Cable	CABL-010
Quick Disconnect 5M Extension Cable	CABL-013

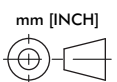
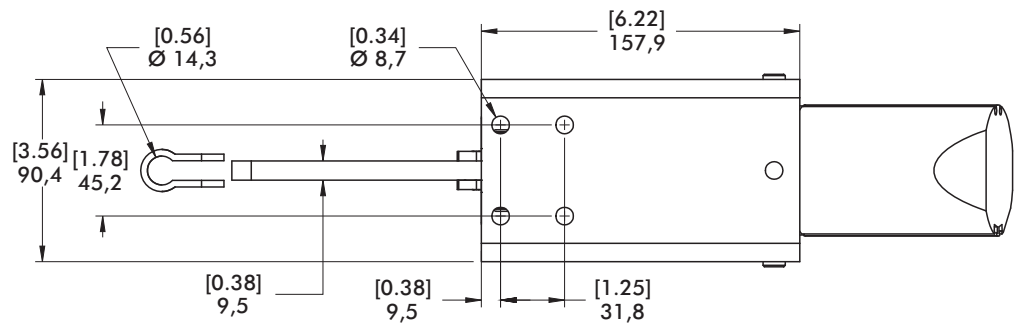
See Pneumatic Accessories section for more options

Series 847 Standard Clamp Dimensions  
-U/-S

847-U



847-S





## Series 858 Product Overview

## Features:

- Hardened pins and bushing at all pivot points for long lifecycle
- Large, solid clamping arm is easily modified to suit application requirements
- Sensor ready for round or T-slot style sensors

## Applications:

- Assembly
- Welding

## Also Available:

See page 13.1 for sensing options  
High temperature version available  
Upon Request, add **-HT** to model number. Example: 858-U-**HT**

▲ 858

■ 858-E



## Series 858 Technical Information, Holding Capacities

Model	Maximum Holding Capacity		Max. Exerting Force @ 5bar [72PSI]		Max. Pressure at Max. Mechanical Advantage† bar [PSI]		Weight	Port Size
	Inner	Outer	Inner	Outer	Inner	Outer		
▲ 858	[4,000 lbf] 17800 N	[2,000 lbf] 8900 N	[1,530 lbf] 6857 N	[800 lbf] 3585 N	10 [145]	5,3 [77]	[16.11lb] 7.31kg	1/4 NPT
■ 858-E								G-1/4

See Technical Appendix Section for details. Preferred Market: ▲ NA ■ Europe/SA ● Global

**Max Cylinder Pressure:** 10bar [145psig]\*

**Max Operating Temp:** -10°C to 90°C [-14°F to 194°F]

**Replacement Seal Kit:** 850450-63-1-00

\*In no case should the inlet pressure be high enough to create an exerting force that exceed's the clamps' holding capacity.

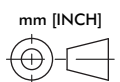
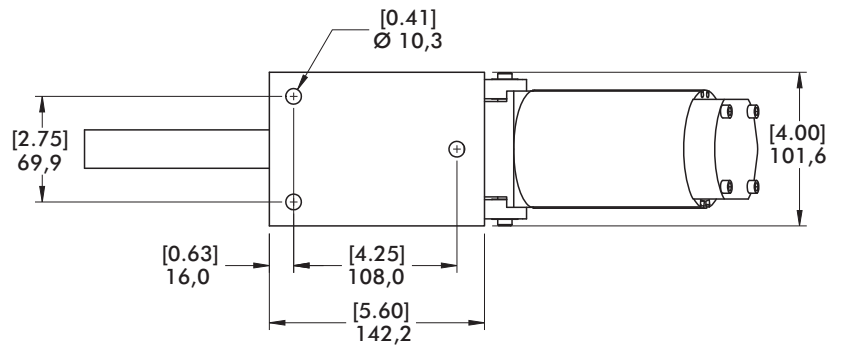
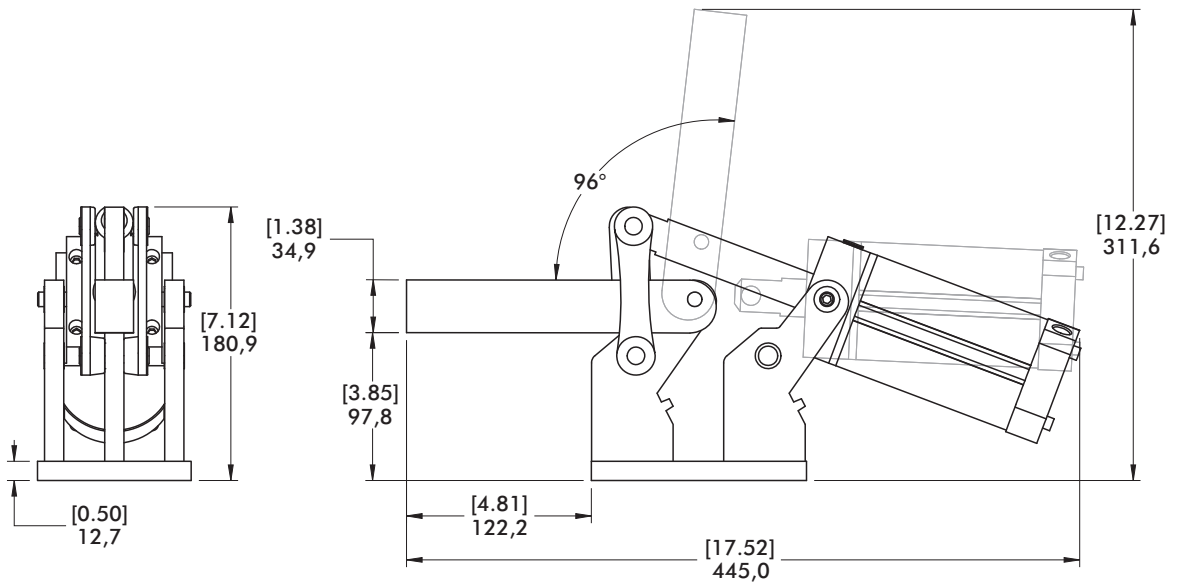
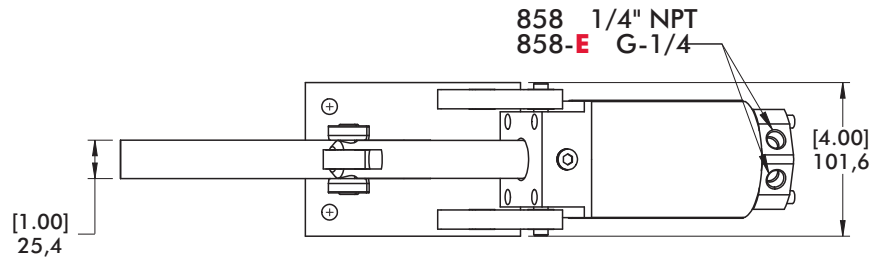
## Sensor Accessories

	Item Number
Round Reed Switch with Quick Disconnect	810169
T-slot Reed Switch with Quick Disconnect	8EA-109-1
Quick Disconnect 2M Extension Cable	CABL-010
Quick Disconnect 5M Extension Cable	CABL-013

See Pneumatic Accessories section for more options

Series 858 Standard Clamp Dimensions

▲ 858  
■ 858-E



Series 8021, 8071, 8101 Product Overview

Features:

- Enclosed clamp for dirty environments such as spot and MIG welding
- Non-pivoting cylinder can be hard-piped into fixtures
- Sensor ready for round or T-slot style sensors

Applications:

- Assembly
- Welding

Also Available:

See page 8.1 for spindle accessories  
 See page 13.1 for sensing options  
 High temperature version available  
 Upon Request, add **-HT** to model number. Example: 8071-U-**HT**

▲ 8021  
 ■ 8021-UE



▲ 8071  
 ■ 8071-UE



▲ 8101 ⓘ  
 ■ 8101-UE ⓘ



Series 8021, 8071, 8101 Technical Information, Holding Capacities

Model	Maximum Holding Capacity		Max. Exerting Force @ 5bar [72PSI]		Weight	Port Size	Spindle Accessory (Supplied)
	Inner	Outer	Inner	Outer			
▲ 8021	[390 lbf]	[255 lbf]	[169 lbf]	[100 lbf]	[2.30lb]	1/8 NPT	8021122 (Flanged Washers)
■ 8021-UE	1735 N	1135 N	760 N	449 N	1,04kg	G-1/8	
▲ 8071	[450 lbf]	[310 lbf]	[496 lbf]	[283 lbf]	[2.80lb]	1/8 NPT	507107 (Bolt Retainer)
■ 8071-UE	2000 N	1380 N	2218 N	1267 N	1,27kg	G-1/8	
▲ 8101 ⓘ	[700 lbf]	[370 lbf]	[491 lbf]	[253 lbf]	[7.30lb]	1/8 NPT	8101122 (Flanged Washers)
■ 8101-UE ⓘ	3110 N	1645 N	2202 N	1153 N	3,31kg	G-1/8	

See Technical Appendix Section for details. Preferred Market: ▲ NA ■ Europe/SA ● Global

ⓘ This item is available upon request

**Max Cylinder Pressure:** 10bar [145psig]\*

**Max Operating Temp:** -10°C to 90°C [-14°F to 194°F]

**Replacement Seal Kit:** 801450-40-1-00

\*In no case should the inlet pressure be high enough to create an exerting force that exceed's the clamps' holding capacity.

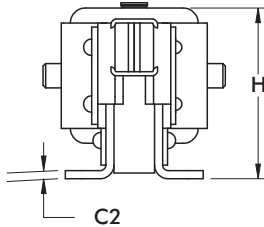
**Sensor Accessories**

	Item Number
Round Reed Switch with Quick Disconnect	810169
T-slot Reed Switch with Quick Disconnect	8EA-109-1
Quick Disconnect 2M Extension Cable	CABL-010
Quick Disconnect 5M Extension Cable	CABL-013

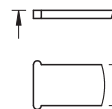
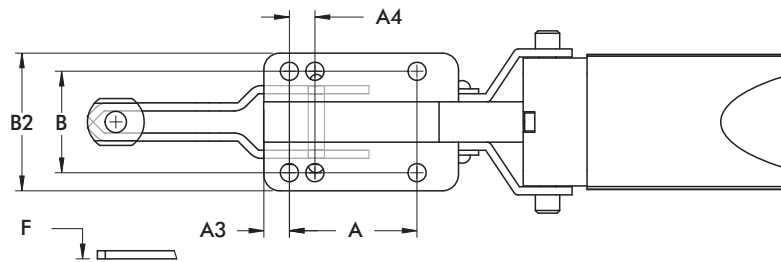
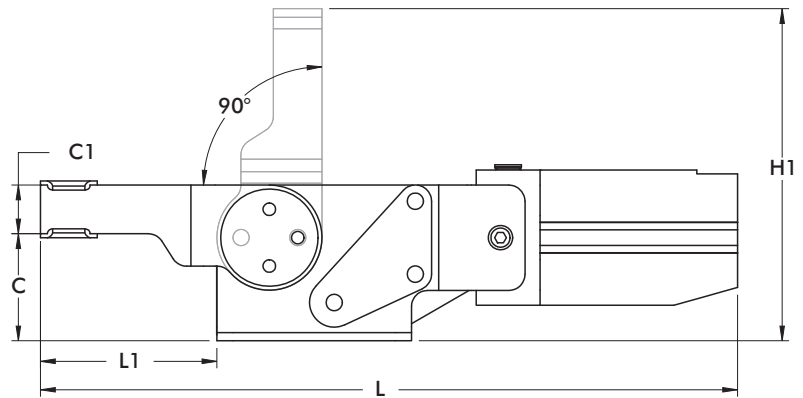
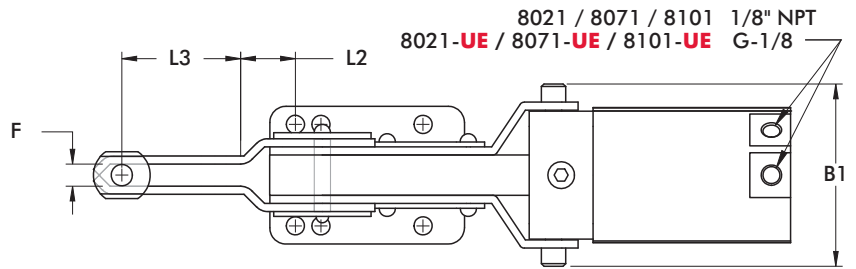
See Pneumatic Accessories section for more options

Series **8021, 8071, 8101** Standard Clamp Dimensions  
8021/8071/8101/-UE

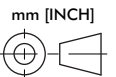
▲ 8021  
■ 8021-UE



▲ 8071  
■ 8071-UE



CLAMPING BAR  
8021 / 8021-UE  
8101 / 8101-UE



Model	A	A1	A3	A4	B	B1	B2	C	C1	C2	ØD	F
8021	[0.79]	[1.97]	[0.47]	-	[1.50]	[2.26]	[1.88]	[1.56]	[0.63]	[0.13]	[0.21]	[0.56]
8021-UE	20	50	12	-	38,2	57,4	47,9	39,6	16	3,2	5,3	14,3
8071	[1.97]	[3.00]	[0.39]	[0.39]	[1.56]	[2.81]	[2.12]	[1.65]	[0.75]	[0.13]	[0.28]	[0.34]
8071-UE	50	76,2	10	10	39,7	71,4	53,9	41,9	19,1	3,2	7,1	8,7
8101	[3.54]	[4.75]	[0.59]	-	[2.20]	[3.53]	[2.86]	[2.50]	[1.00]	[0.12]	[0.34]	[0.75]
8101-UE	90	120,7	15	-	55,9	89,8	72,6	63,5	25,4	3,1	8,7	19,0

Model	H	H1	L	L1	L2	L3	M
8021	[2.40]	[4.44]	[9.86]	[2.25]	[0.44]	[1.31]	1/4
8021-UE	60,9	112,8	250,4	57,2	11	33,2	M6
8071	[2.63]	[5.12]	[10.74]	[2.72]	[0.40]	[1.83]	5/16
8071-UE	66,9	130	272,9	69	10,1	46,5	M8
8101	[3.53]	[7.50]	[14.72]	[4.00]	[0.59]	[2.53]	3/8
8101-UE	89,7	190,5	373,9	101,6	14,9	64,3	M10

Series 817, 827 Product Overview

Features:

- Dual mounting surfaces for maximum flexibility
- Sensor ready for round or T-slot style sensors
- Built-in flow restriction eliminates need for external flow controls

Applications:

- Assembly
- Welding

Also Available:

See page 8.1 for spindle accessories  
 See page 13.1 for sensing options  
 High temperature version available  
 Upon Request, add **-HT** to model number. Example: 827-U-**HT**

▲ 817-U  
 ■ 817-UE



▲ 817-S  
 ■ 817-SE



▲ 827-U  
 ■ 827-UE



▲ 827-S  
 ■ 827-SE



Series 817, 827 Technical Information, Holding Capacities, Mounting Options

Model	Maximum Holding Capacity		Max. Exerting Force @ 5bar [72PSI]		Weight	Port Size	Spindle Accessory (Supplied)
	Inner	Outer	Inner	Outer			
▲ 817-U ■ 817-UE	[375 lbf] 1670 N		[369 lbf] 1648 N		1,05kg [2.31lb]	1/8 NPT	507107 (Flanged Washers)
		[200 lbf] 890 N		[225 lbf] 1005 N		G-1/8	
▲ 817-S ■ 817-SE	[450 lbf] 2000 N		[360 lbf] 1608 N		2,14kg [4.71lb]	1/8 NPT	207107 (Bolt Retainer)
		[390 lbf] 1735 N		[309 lbf] 1383 N		G-1/8	
▲ 827-U ■ 827-UE	[600 lbf] 2670 N		[491 lbf] 2200 N			1/8 NPT	235106 (Flanged Washers)
		[330 lbf] 1470 N		[281 lbf] 1257 N		G-1/8	
▲ 827-S ■ 827-SE	[700 lbf] 3110 N					1/8 NPT	210114 (Bolt Retainer)
						G-1/8	

See Technical Appendix Section for details. Preferred Market: ▲ NA ■ Europe/SA ● Global

**Max Cylinder Pressure:** 10bar [145psig]\*  
**Max Operating Temp:** -10°C to 90°C [-14°F to 194°F]  
**Replacement Seal Kit:** 801450-40-1-00

\*In no case should the inlet pressure be high enough to create an exerting force that exceed's the clamps' holding capacity.

Sensor Accessories	Item Number
Round Reed Switch with Quick Disconnect	810169
T-slot Reed Switch with Quick Disconnect	8EA-109-1
Quick Disconnect 2M Extension Cable	CABL-010
Quick Disconnect 5M Extension Cable	CABL-013

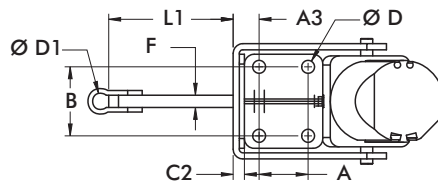
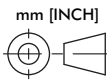
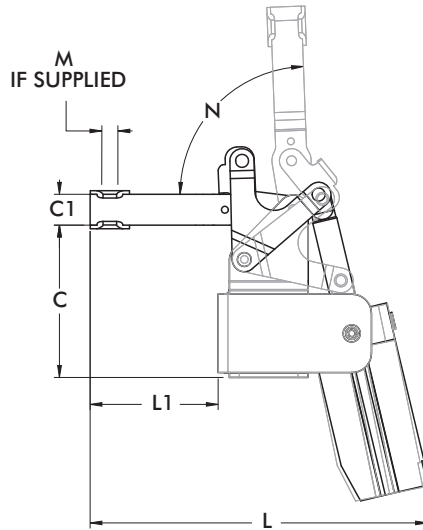
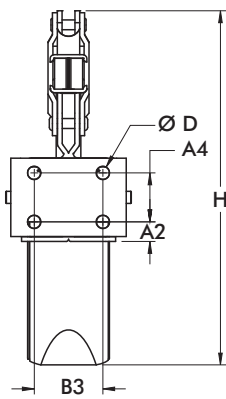
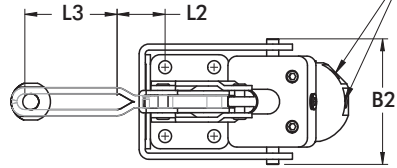
See Pneumatic Accessories section for more options

Series 817, 827 Standard Clamp Dimensions  
-U/-UE/-S/-SE

▲ 817-U  
■ 817-UE

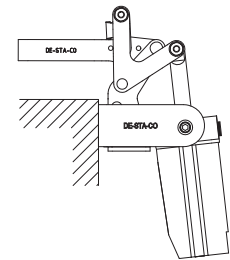
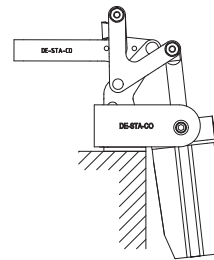
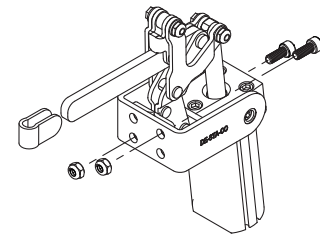


817-U / 817-S / 827-U / 827-S 1/8" NPT  
817-UE / 817-SE / 827-UE / 827-SE G-1/8



**Mounting Options:**

Use two bolts in the "side" mounting holes, to secure mounting bracket, when "top" mounting.



Top Mounting

Side Mounting

Model	A	A2	A3	A4	B	B2	B3	C	C1	C2	C3	C4
817-U												
817-UE	[0.63]	[0.44]	[0.60]	[0.63]	[1.00]	[2.44]	[1.00]	[2.69]	[0.63]	[0.12]	[1.25]	[1.31]
817-S	16	11,2	15,1	16	25,4	62	25,4	68,3	16	3,1	31,8	33,3
817-SE												
827-U								[3.89]	[0.79]			[1.76]
827-UE	827-U	[1.25]	[0.50]	[0.66]	[1.25]	[1.76]	[3.20]	98,8	20	[0.12]	[2.00]	44,8
827-S		31,8	12,7	16,8	31,8	44,7	81,4			3,1	50,8	
827-SE								[3.91]	[0.75]			[1.78]
								99,2	19,1			45,3

Model	ØD	ØD1	F	H	L	L1	L2	L3	M	N
817-U					[6.24]	[2.37]	[0.19]	[1.90]		
817-UE	[0.27]	-	-	[7.51]	158,6	60,3	4,8	48,4	5/16	95°
817-S	6,7			190,7					M8	
817-SE		[0.34]	[0.25]		[0.34]	[0.25]	-	-		
		8,7	6,4		8,7	6,4				
827-U					[8.61]	[3.27]	[1.23]	[2.35]		
827-UE	[0.33]	-	-	[9.04]	218,7	83,1	31,2	59,7	3/8	88°
827-S	8,4			229,7					M10	
827-SE		[0.42]	[0.31]		[8.49]	[3.18]	-	-		
		10,7	7,9		215,6	80,7				



## Series 868 Product Overview

## Features:

- Hardened pins and bushing at all pivot points for long lifecycle
- Large, solid clamping arm is easily modified to suit application requirements
- Sensor ready for round or T-slot style sensors

## Applications:

- Assembly
- Welding

## Also Available:

See page 13.1 for sensing options  
High temperature version available  
Upon Request, add **-HT** to model number. Example: 868-U-**HT**

▲ 868

■ 868-E



## Series 868 Technical Information, Holding Capacities

Model	Maximum Holding Capacity		Max. Exerting Force @ 5bar [72PSI]		Weight	Port Size
	Inner	Outer	Inner	Outer		
▲ 868	[4000 lbf] 17800 N	[2400 lbf] 10675 N	[1704 lbf] 7637 N	[800 lbf] 3585 N	[17.0lb] 7,71kg	1/4 NPT
■ 868-E						G-1/4

See Technical Appendix Section for details. Preferred Market: ▲ NA ■ Europe/SA ● Global

**Max Cylinder Pressure:** 10bar [145psig]\*

**Max Operating Temp:** -10°C to 90°C [-14°F to 194°F]

**Replacement Seal Kit:** 850450-63-1-00

\*In no case should the inlet pressure be high enough to create an exerting force that exceed's the clamps' holding capacity.

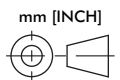
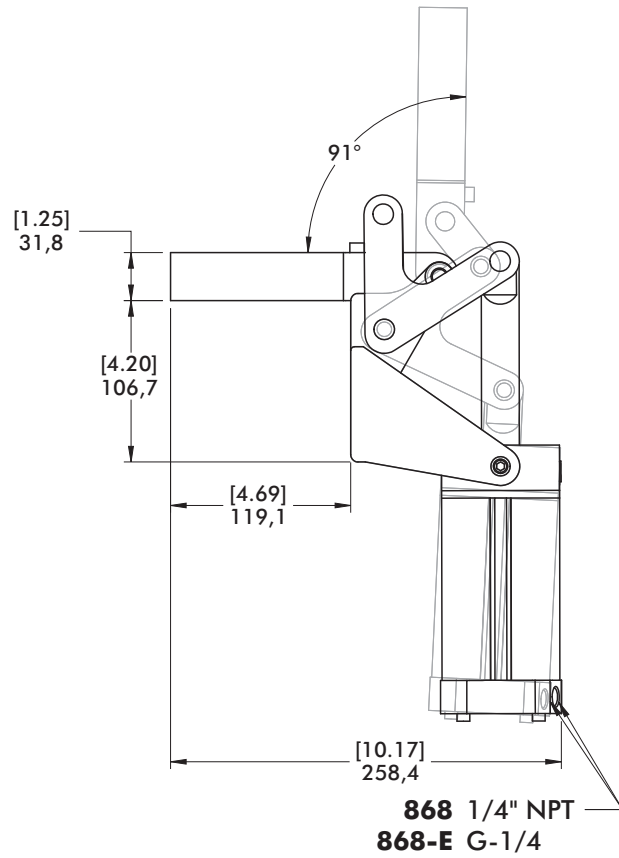
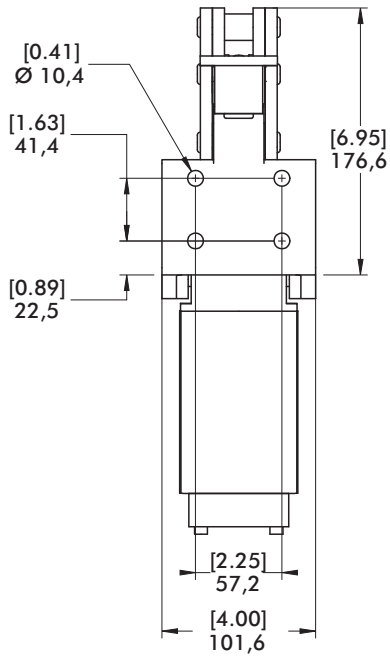
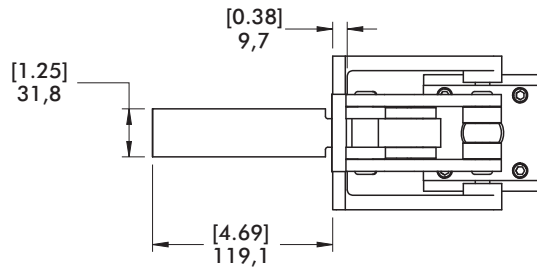
## Sensor Accessories

	Item Number
Round Reed Switch with Quick Disconnect	810169
T-slot Reed Switch with Quick Disconnect	8EA-109-1
Quick Disconnect 2M Extension Cable	CABL-010
Quick Disconnect 5M Extension Cable	CABL-013

See Pneumatic Accessories section for more options

Series 868 Standard Clamp Dimensions

▲ 868  
■ 868-E



Series 816 Product Overview

Features:

- Smallest of the pneumatic straight line action series
- Pneumatic version of Model 601

Applications:

- Assembly

Also Available:

See page 13.1 for sensing options

816 ⓘ  
816-M ⓘ



Series 816 Technical Information, Holding Capacities, Standard Clamp Dimensions

Model	Maximum Holding Capacity	Max. Exerting Force @ 5bar [72PSI]	Plunger Travel	Plunger Thread	Weight	Port Size	Spindle Accessory
816 ⓘ	[200 lbf] 890 N	[244 lbf] 1097 N	[0.44] 11,2	#8-32	[0.43lb] 0,20kg	M5	105203
816-M ⓘ				M4			205208-M

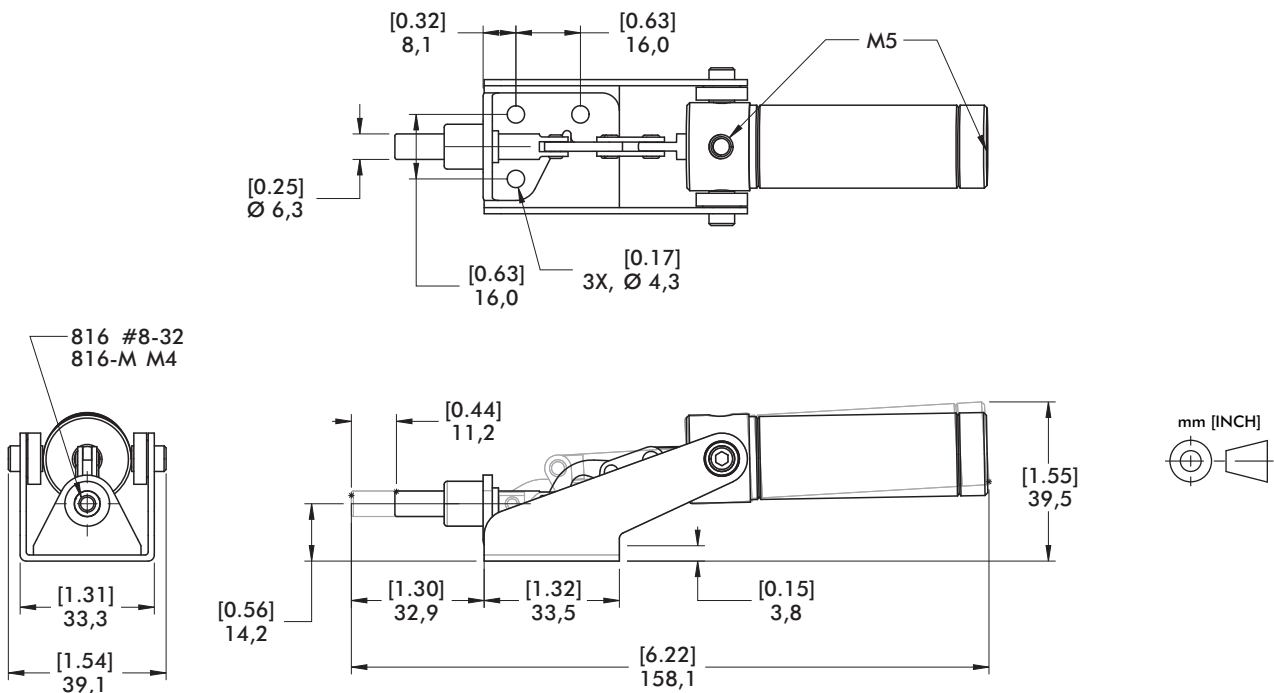
See Technical Appendix Section for details. ⓘ This item is available upon request

**Max Cylinder Pressure:** 17bar [250psig]\*

**Max Operating Temp:** -23°C to 74°C [-10°F to 165°F]

**Optional Sensors:** 810156, 810158

\*In no case should the inlet pressure be high enough to create an exerting force that exceed's the clamps' holding capacity.



## Series 803 Product Overview

### Features:

- Pneumatic version of Model 603 manual straight line action clamp
- Sensor ready for round or T-slot style sensors

### Applications:

- Assembly
- Welding

### Also Available:

See page 8.1 for spindle accessories

See page 13.1 for sensing options

High temperature version available  
Upon Request, add **-HT** to model number. Example: 803-U-**HT**

▲ 803

■ 803-ME



## Series 803 Technical Information, Holding Capacities, Standard Clamp Dimensions

Model	Maximum Holding Capacity	Max. Exerting Force @ 5bar [72PSI]	Plunger Travel	Plunger Thread	Weight	Port Size	Spindle Accessory (Not Supplied)
▲ 803	[600 lbf] 2670 N	[675 lbf] 3015 N	[0.75] 19,1	5/16-18	[1.86lb] 0,84kg	1/8 NPT	225208
■ 803-ME				M8		G-1/8	225208-M

See Technical Appendix Section for details. Preferred Market: ▲ NA ■ Europe/SA ● Global

**Max Cylinder Pressure:** 10bar [145psig]

**Max Operating Temp:** -10°C to 90°C [-14°F to 194°F]

**Replacement Seal Kit:** 802450-32-1-00

\*In no case should the inlet pressure be high enough to create an exerting force that exceed's the clamps' holding capacity.

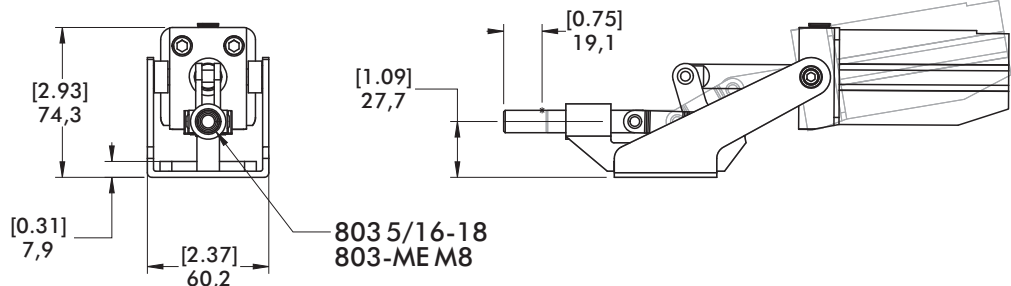
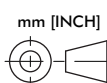
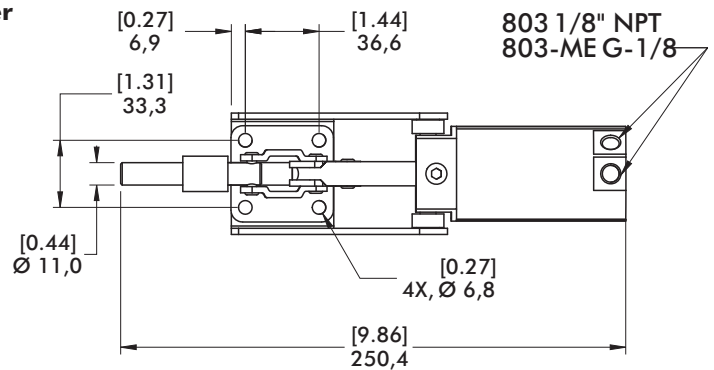
### Sensor Accessories

- Round Reed Switch with Quick Disconnect
- T-slot Reed Switch with Quick Disconnect
- Quick Disconnect 2M Extension Cable
- Quick Disconnect 5M Extension Cable

### Item Number

- 810169
- 8EA-109-1
- CABL-010
- CABL-013

See Pneumatic Accessories section for more options



Series 8031 Product Overview

Features:

- Fully enclosed straight line action clamp for the dirtiest environments
- Compact design with high holding capacity
- Sensor ready for round style sensors

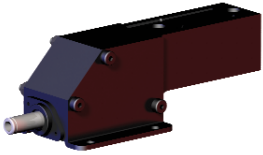
Applications:

- Assembly
- Welding

Also Available:

See page 8.1 for spindle accessories  
See page 13.1 for sensing options

8031 ⓘ



Series 8031 Technical Information, Holding Capacities, Standard Clamp Dimensions

Model	Maximum Holding Capacity	Max. Exerting Force @ 5bar [72PSI]	Plunger Travel	Plunger Thread	Weight	Port Size	Spindle Accessory (Not Supplied)
8031 ⓘ	[2000 lbf] 8900 N	[731 lbf] 3285 N	[0.75] 19,1	M8	[1.17lb] 2,58kg	1/8 NPT	225208-M

See Technical Appendix Section for details. ⓘ This item is available upon request

**Max Cylinder Pressure:** 10bar [145psig]\*

**Max Operating Temp:** -10°C to 90°C [-14°F to 194°F]

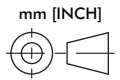
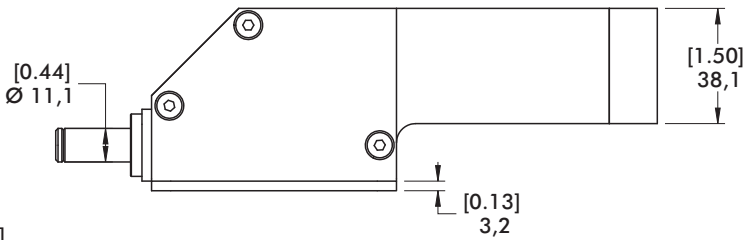
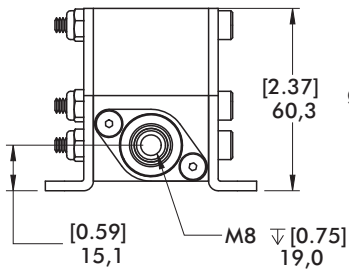
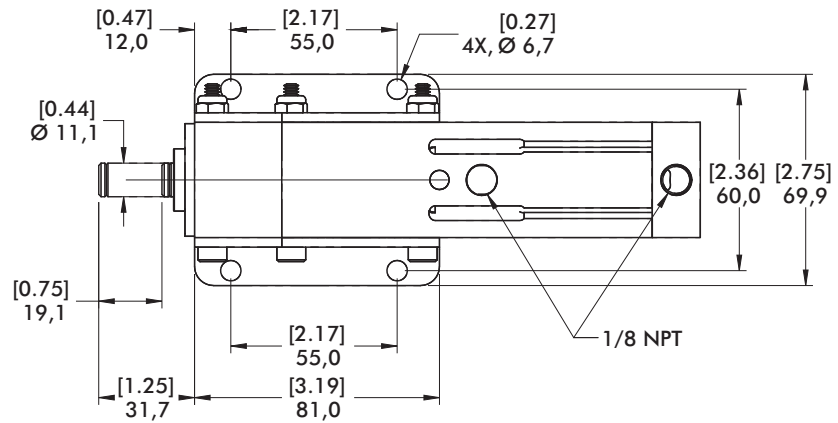
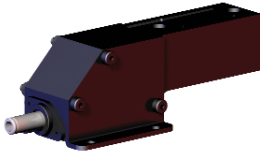
\*In no case should the inlet pressure be high enough to create an exerting force that exceed's the clamps' holding capacity.

Sensor Accessories	Item Number
Round Reed Switch with Quick Disconnect	810169
Quick Disconnect 2M Extension Cable	CABL-010
Quick Disconnect 5M Extension Cable	CABL-013

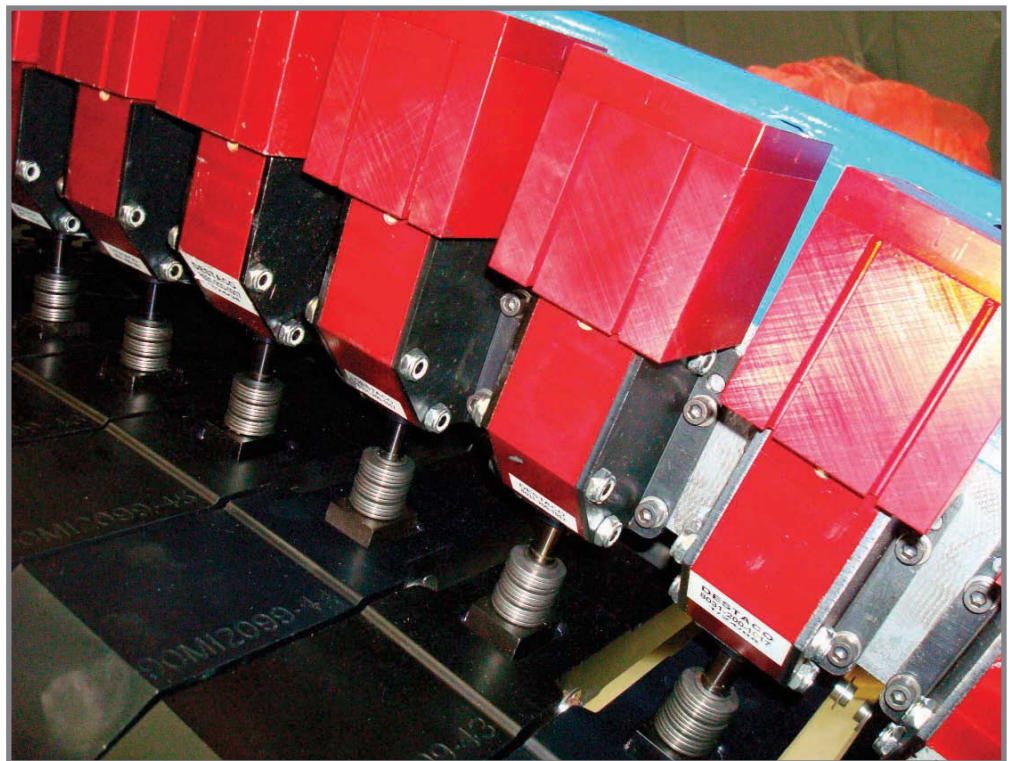
See Pneumatic Accessories section for more options

Series 8031 Standard Clamp Dimensions

8031 ⓘ



Model 8031 shown being used in a stir friction welding fixture



Series 830 Product Overview

Features:

- Pneumatic version of Model 630 manual straight line action clamp
- Sensor ready for round or T-slot style sensors
- Built-in flow restriction eliminates need for external flow controls

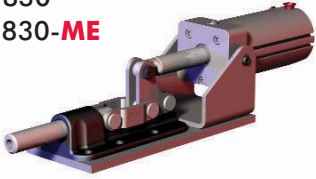
Applications:

- Assembly
- Welding

Also Available:

See page 8.1 for spindle accessories  
 See page 13.1 for sensing options  
 High temperature version available  
 Upon Request, add **-HT** to model number. Example: 830-U-**HT**

- ▲ 830
- 830-ME



Series 830 Technical Information, Holding Capacities, Standard Clamp Dimensions

Model	Maximum Holding Capacity	Max. Exerting Force @ 5bar [72PSI]	Plunger Travel	Plunger Thread	Weight	Port Size	Spindle Accessory (Not Supplied)
▲ 830	[2500 lbf] 11100 N	[800 lbf] 3582 N	31,8 [1.25]	5/16-18 M8	2,79kg [6.14lb]	1/8 NPT G-1/8	210203 210203-M

See Technical Appendix Section for details. Preferred Market: ▲ NA ■ Europe/SA ● Global

**Max Cylinder Pressure:** 10bar [145psig]  
**Max Operating Temp:** -10°C to 90°C [-14°F to 194°F]  
**Replacement Seal Kit:** 810450-40-1-00  
 \*In no case should the inlet pressure be high enough to create an exerting force that exceed's the clamps' holding capacity.

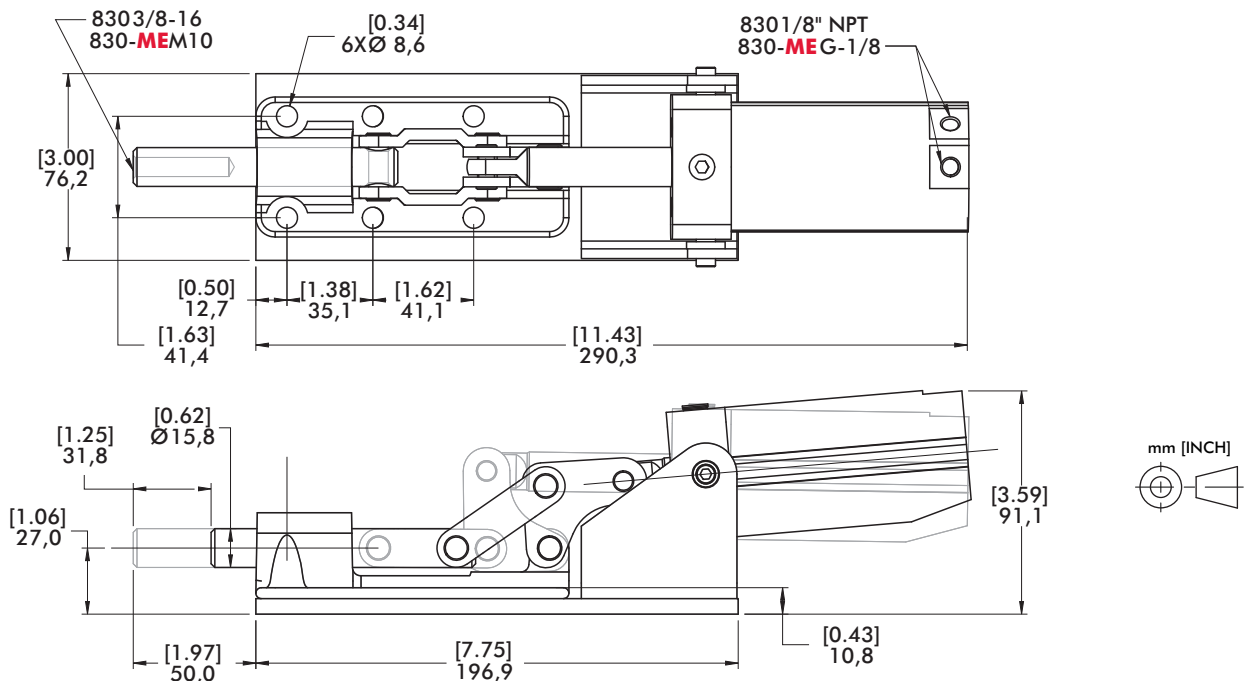
Sensor Accessories

- Round Reed Switch with Quick Disconnect
- T-slot Reed Switch with Quick Disconnect
- Quick Disconnect 2M Extension Cable
- Quick Disconnect 5M Extension Cable

Item Number

- 810169
- 8EA-109-1
- CABL-010
- CABL-013

See Pneumatic Accessories section for more options



Series 850 Product Overview

Features:

- Pneumatic version of Model 650 manual straight line action clamp
- Sensor ready for round or T-slot style sensors
- Built-in flow restriction eliminates need for external flow controls

Applications:

- Assembly
- Welding
- Light press operations

Also Available:

See page 8.1 for spindle accessories  
 See page 13.1 for sensing options  
 High temperature version available  
 Upon Request, add **-HT** to model number. Example: 850-U-**HT**

- ▲ 850 ⓘ
- 850-ME ⓘ



Series 850 Technical Information, Holding Capacities, Standard Clamp Dimensions

Model	Maximum Holding Capacity	Max. Exerting Force @ 5bar [72PSI]	Plunger Travel	Plunger Thread	Weight	Port Size	Spindle Accessory (Supplied)
▲ 850 ⓘ	[1,600 lbf] 71200 N	[1232 lbf] 5522 N	50,8 [2.00]	5/8-11 M16	7,56kg [16.66lb]	1/4 NPT G-1/4	225203 250203-M

See Technical Appendix Section for details. Preferred Market: ▲ NA ■ Europe/SA ● Global

ⓘ This item is available upon request

**Max Cylinder Pressure:** 10bar [145psig]  
**Max Operating Temp:** -10°C to 90°C [-14°F to 194°F]  
**Replacement Seal Kit:** 850450-63-1-00

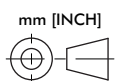
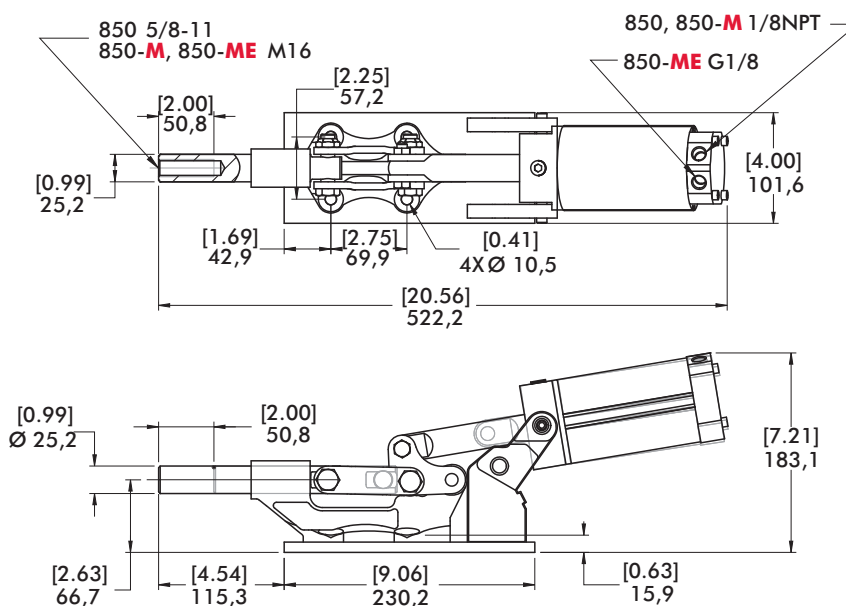
Sensor Accessories

- Round Reed Switch with Quick Disconnect
- T-slot Reed Switch with Quick Disconnect
- Quick Disconnect 2M Extension Cable
- Quick Disconnect 5M Extension Cable

Item Number

- 810169
- 8EA-109-1
- CABL-010
- CABL-013

See Pneumatic Accessories section for more options



Series 800, 1200 Product Overview

Features:

- Low profile and compact for mounting in tight spaces
- Uniform clamping force throughout full stroke
- Accommodates variable workpiece thickness
- Single acting

Applications:

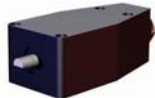
- Assembly
- Welding
- Light machining

How it Works:

1. Clamp arm retracts fully for loading and unloading.
2. Clamp arm moves straight forward.
3. Clamp arm pivots down to hold workpiece.

800  
800-E

1200 ⓘ  
1200-E ⓘ



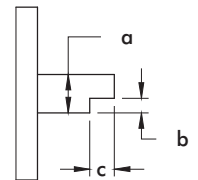
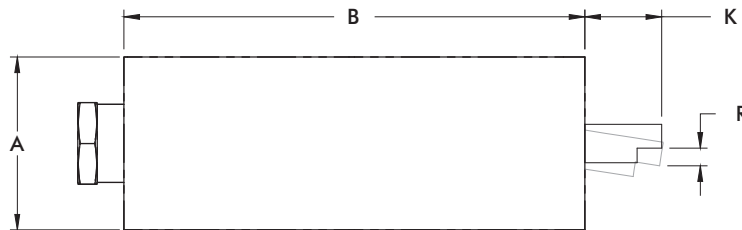
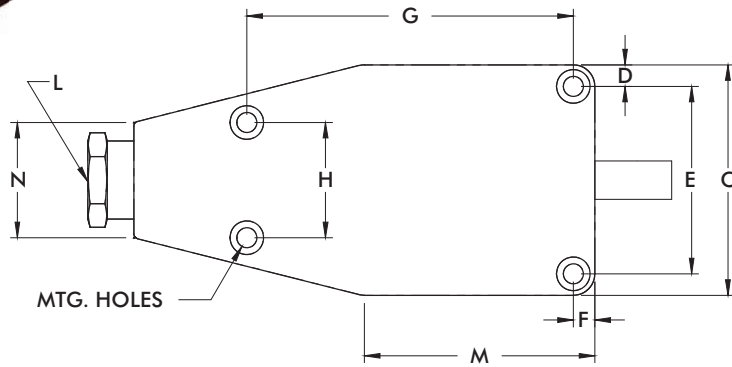
Series 800, 1200 Technical Information, Holding Capacities

Model	Inlet Pressure bar [PSI]	Exerting Force	Max. Pressure at Max. Mechanical Advantage† bar [PSI]	Clamping Range	Weight	Port Size
800	[70~150] 4,8~10,3	[850~1500 lbf] 385~680 N	4,8 [70]	[0.09] 2,3	[2.50lb] 1,13kg	1/4 NPT
800-E		[650~1200 lbf] 295~544 N		[0.16] 4,0		
1200 ⓘ		[750~1600 lbf] 340~725 N		[0.25] 6,4	[4.00lb] 1,81kg	
1200-E ⓘ		[550~1200 lbf] 250~544 N		[0.38] 9,6		

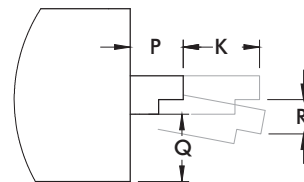
ⓘ This item is available upon request

Series 800, 1200 Standard Clamp Dimensions

800  
800-E



Arm Configuration



Model E

Model	A	B	C	D	E	F	G	H	K	L	M	N	P	Q	R	MNTG HOLES
800	[1.63] 41,4	[4.81] 122,8	[2.72] 69,1	[0.25] 6,4	[2.21] 56,1	[0.25] 6,4	[3.13] 79,5	[1.19] 30,2	[0.50] 12,7		[2.31] 58,37	[1.50] 38,1	-	[0.59] 15,0	[0.09] 2,3	[0.26] 6,6
800-E										1/4 NPT		[0.50] 12,7		[0.16] 4,1		
1200	[2.25] 57,2	[6.00] 152,4	[3.00] 76,2	[0.28] 7,1	[2.44] 62	[0.28] 7,1	[4.25] 108	[1.50] 38,1	[1.00] 25,4		[3.00] 76,2	[1.38] 35,1	-	[0.63] 16	[0.25] 6,4	
1200-E												[0.69] 17,5		[0.38] 9,7		