

## Introduction ..... i-3 – i-6

## Manual Clamping Technology ..... Section 1 – 9



- 1 Vertical Hold Down Clamps
- 2 Horizontal Hold Down Clamps
- 3 Straight Line Action Clamps
- 4 Variable Stroke Straight Line Action Clamps - System RAKO
- 5 Precision Clamping
- 6 Pull Action Latch Clamps
- 7 Squeeze Action Plier Clamps
- 8 Accessories
- 9 Carver Clamps

## Pneumatic Clamping Technology ..... Section 10 – 18



- 10 Pneumatic Clamps
- 11 Pneumatic Swing Clamps
- 12 Pneumatic Swing Clamp Accessories
- 13 Pneumatic Accessories
- 14 Pneumatic Power Cylinders
- 15 Pneumatic Power Clamps
- 16 Pneumatic Pin Packages
- 17 Pneumatic Sheet Metal Grippers
- 18 Pneumatic Pivot Units

## Hydraulic Clamping Technology ..... Section 19

Cylinders  
Thru-Hole Rams  
Swing/Pull Clamps  
Power Supplies  
Accessories

## Technical Appendix ..... Section 20

Manual Clamping Technology  
Pneumatic Clamping Technology

## Index ..... Section 21

DE-STA-CO offers the widest variety of manual, hydraulic and pneumatic products on the market. Availability of specials and custom components ensures a perfect solution to your specific applications.



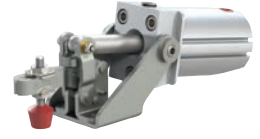
Vertical Clamps



Horizontal Clamps


Straight Line  
Action Clamps


Latch Clamps

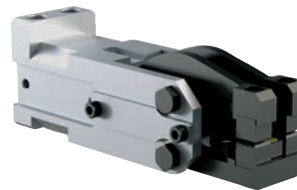

Pneumatic Toggle  
Clamps


Hydraulic and Pneumatic Clamps

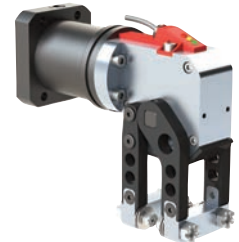


Lightweight Power Clamps

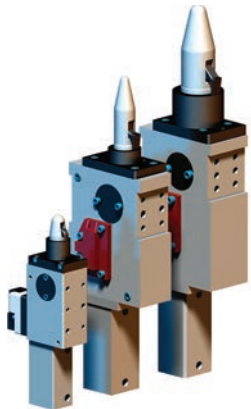

Hydraulic Power  
Booster

High Temperature  
Gripper


Cam Style Grippers



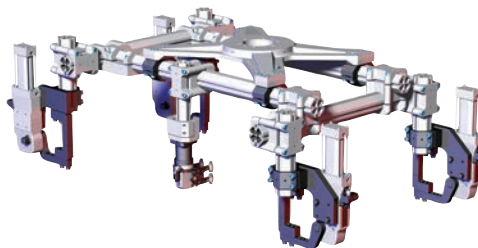
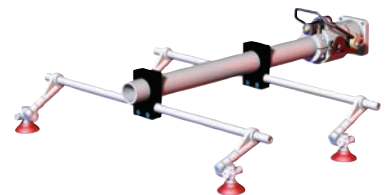
Mini Clamps



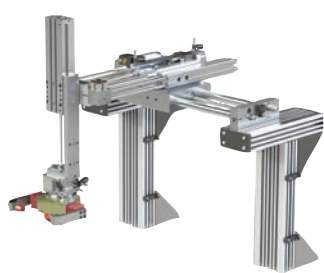
Pneumatic Pin Clamps



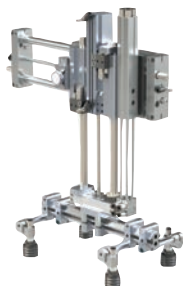
Vacuum Products


Geometric End Effector  
Spidergrip™

Modular End Effector  
Bodybuilder™

Standard and Micro  
Round Tooling Systems

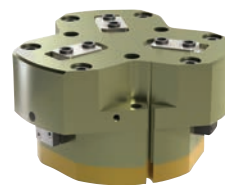
With an incredibly broad variety of standard-setting products, DE-STA-CO raises the bar for total automation solutions. Complementary engineered products can be tailored to meet your unique automation needs



DIRECTCONNECT™ Pick and Place Modules



Rotary Actuators



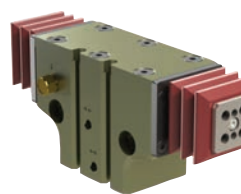
Three Jaw Parallel Grippers



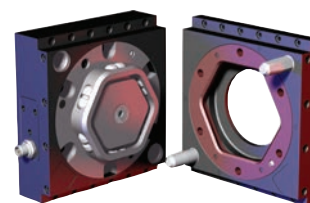
Electric Parallel Grippers



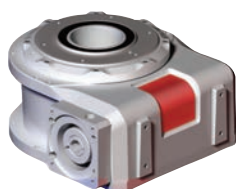
Base Slides



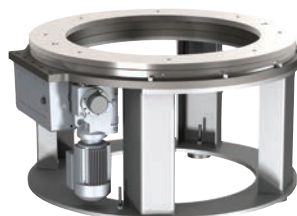
Highly Configurable Parallel Grippers



Robotic Automatic Tool Changers



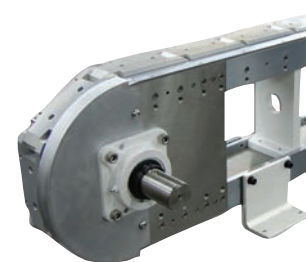
Index Drives



Ring Index Drives



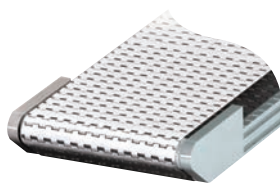
Linear Parts Handlers



Precision Link Conveyors



Direct Drive Conveyors



Modular Conveyors



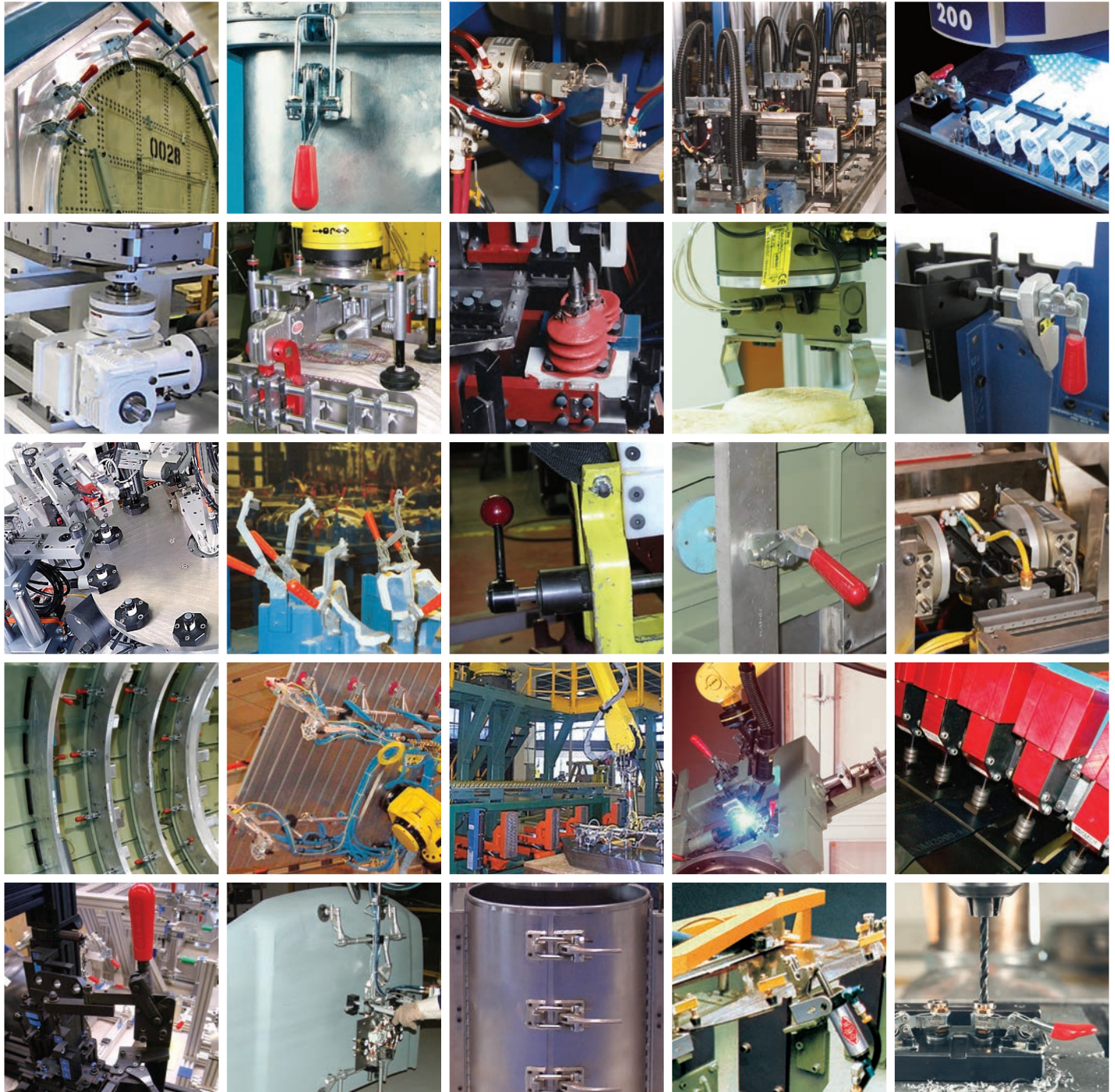
Rapid Transfer Port (CRL)



Three Piece Manipulator (CRL)

Today's manufacturing challenges are tougher than ever. Regardless of the industry or application, DE-STA-CO offers workholding solutions to meet your needs.

Our products are ideal for a wide range of industries and manufacturing processes.



## Best Solutions...Unique Part Numbers...Expert Support

**DE-STA-CO offers special engineering services** which will work extensively with the customer to create solutions that achieves maximum performance and accuracy required in every industry.

Whether it requires building a system with standard products, modifying an existing product or designing a completely unique component,

**DE-STA-CO has solutions that can help you clamp down on productivity.**



**Hi-temp clamping** for composite airframe manufacturing



**Pneumatic clamp** with manual actuation handle



**Plier clamp** modified for mounting plate



**Stainless steel clamp** with special hook and locking tab



**Latch clamp** used as a safety latch for re-usable containers and carts



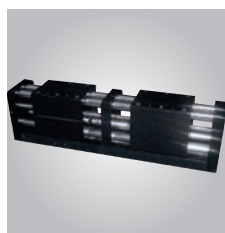
**Vertical clamp** with bar weldment and spring loaded swivel handle



**Squeeze action plier clamp** with non-marring jaws



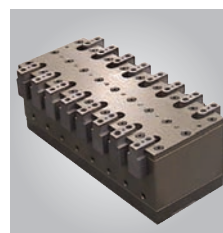
**Stainless steel straight line clamp** used in chemical machining process



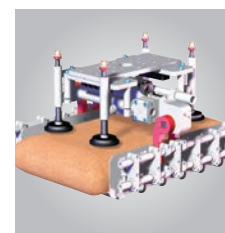
Application required a gripper with long stroke and high grip force in rim handling applications.



Carbon fiber end effector tooling.



Application required grippers to be installed on a very tight centerline with this 8 bank gripper.



Articulating package palletizing end effector tooling system.



Custom Cams