



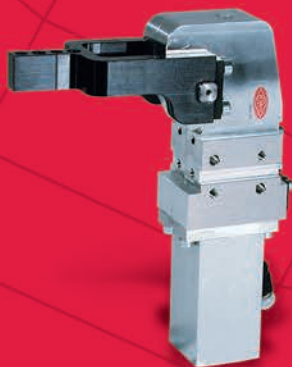
**Index it**



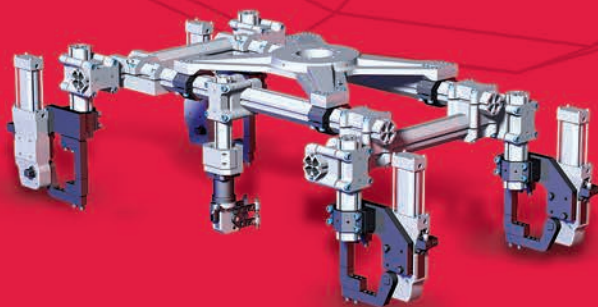
**Clamp it**



**Grip it**



**Hold it**



**Place it**

**GLOBAL CAPABILITIES**  
**WORKHOLDING & AUTOMATION SOLUTIONS**

# WHO IS DE-STA-CO?

DE-STA-CO is a vibrant company with a history of providing manufacturing productivity solutions to customers worldwide. A pioneering manufacturer of innovative material handling tools for any application, DE-STA-CO focuses steadfastly on customers' needs, consistently offering industry-leading products for streamlining manufacturing processes. As a result, DE-STA-CO is now the worldwide leader in the innovation, design, manufacture and support of clamping, gripping, transferring, indexing and robotic tooling solutions for workholding and automation needs. Our growth is a direct result of our commitment to using our global resources to serve customers of all sizes on a local, one-on-one basis. DE-STA-CO is a subsidiary of Dover Corporation, a worldwide, diversified manufacturer of industrial products. The goal of Dover Corporation is to be the leader in all markets served, to the benefit of customers and shareholders.

## TEAM DE-STA-CO

Team DE-STA-CO represents our efforts to provide consistent, standard setting service and products to every DE-STA-CO customer, regardless of geographic location. Through this commitment, we are able to draw on our extensive knowledge base to always provide the perfect solution specific to your unique applications. This progressive global approach to doing business provides a level of expertise that is unmatched in the industry.

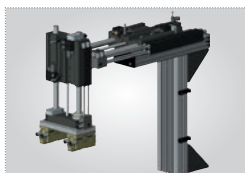


## MILESTONES

- 1915**  
William H. Roberts founds Detroit Stamping Company, providing contract stamping to the rapidly growing automotive industry
- 1936**  
Detroit Stamping Company invents and patents the world's first toggle clamp
- 1954**  
Detroit Stamping Company begins international expansion
- 1958**  
Detroit Stamping Company opens first office in Germany
- 1962**  
Dover Corporation acquires Detroit Stamping Company and changes its name to DE-STA-CO
- 1983**  
DE-STA-CO expands to the Asian market by opening a manufacturing facility in Thailand
- 1996**  
DE-STA-CO acquires Robohand, the first step towards providing complete automation solutions
- 1997**  
DE-STA-CO acquires EOA Systems, an innovative maker of robotic accessories
- 1998**  
DE-STA-CO acquires CCMOP, a French company and leading manufacturer of robotic peripherals
- 1999**  
DE-STA-CO acquires EMA, a Brazilian company and South America's leading manufacturer of manual clamps
- 2001**  
DE-STA-CO acquires CPI Products, a Plymouth, Michigan-based manufacturer of end-effector systems
- 2004**  
DE-STA-CO expands its global presence with new facilities in Shanghai, China
- 2007**  
Established new state-of-the-art headquarters in Auburn Hills, Michigan
- 2007**  
DE-STA-CO acquires IMC, including CAMCO and FERGUSON brands
- 2007**  
Established manufacturing facility in Pune, India
- 2008**  
Central Research Laboratories (CRL) joins Team DE-STA-CO

# VALUE ADDED SERVICES

EACH DAY, DE-STA-CO PROVIDES CUSTOMERS WITH A COMPLETE RANGE OF WORKHOLDING AND AUTOMATION PRODUCTS AND SERVICES that reduce costs, minimize waste and eliminate bottlenecks. As a global supplier, we have extensive experience in bringing optimal solutions to customers of all needs and sizes. When you partner with DE-STA-CO, you put a world of resources at your fingertips.



## MODULAR AUTOMATION

Our full continuum of products provides an extremely flexible approach to automation. Through DE-STA-CO, you receive a solution that is specifically tailored to meet the needs and demands of your operations.



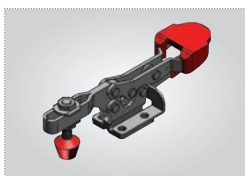
## TRAINING

Providing true solutions requires more than just standard setting products. DE-STA-CO provides customers with a variety of optional training opportunities, including online, on-site and customized training programs.



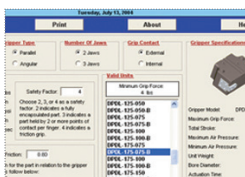
## GLOBAL WEB RESOURCE

In addition to working closely with customers on a face-to-face basis, we provide a wealth of accessible, user-friendly material through our website, [www.destaco.com](http://www.destaco.com). DE-STA-CO's website contains the comprehensive product information you would expect, as well as intuitive tools designed to provide instant customer support.



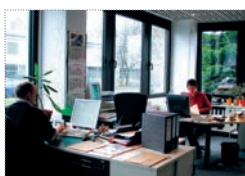
## 3D CAD & CONFIGURATOR

To ensure applicability to the broadest possible base of manufacturers, DE-STA-CO supports a wide variety of CAD programs, ranging from Catia to Unigraphics. All CAD formats are accessible through multiple channels, including our cutting-edge online digital catalog, located at [www.destaco.com](http://www.destaco.com). This web-based 3D CAD library allows engineers to configure individual 3D models from DE-STA-CO's extensive array of workholding and automation products. The intuitive system is part of DE-STA-CO's commitment to providing the exact CAD information you need, whenever you need it.



## ROBOSIZER™ SIZING SOFTWARE

Our web-based Robosizer sizing software allows users to size automation products to fit their application parameters. Product categories featured in the Robosizer software include grippers, rotaries, slides, thrusters, lift tables, load limiters, compliance devices, tool changers, machine load and unload, and feed escapements.



## CUSTOMER SUPPORT

DE-STA-CO provides support to customers available via fax, email or telephone. Our highly trained customer service staff work diligently to address any and all questions you might have.



## TECHNICAL SUPPORT

DE-STA-CO customers receive technical support from our own expert engineers. These highly trained employees work hand-in-hand with you to develop and implement the best possible solutions for your operations.

# CUSTOMIZED SPECIAL PRODUCTS

EACH OF YOUR APPLICATIONS IS UNIQUE and sometimes it takes more than a standard product to achieve maximum performance in manufacturing. When such an occasion arises, an engineer from DE-STA-CO's special engineering service department will work extensively to meet that need by modifying an existing product or creating an entirely new component.

BEST SOLUTIONS

UNIQUE PART NUMBERS

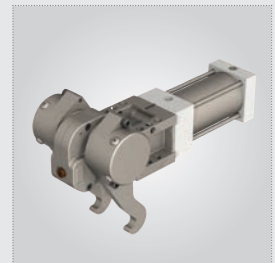
EXPERT SUPPORT



Custom cams



Application required multi-axis oscillator to drive a conveyor and linkages



High temperature pneumatic clamp for airframe manufacturing



Pneumatic clamp with manual actuation handle



Latch clamp with electroless nickel plating



Long stroke, non-synchronous back-to-back gripper for pick and place application



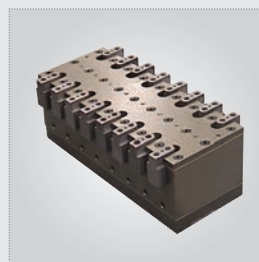
Plier clamp modified for mounting plate



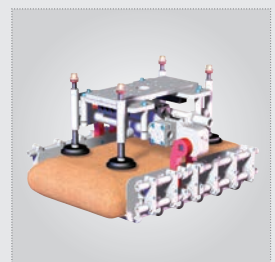
Application required a gripper with long stroke and high grip force in rim handling applications



Carbon fiber end effector tooling



Application required grippers to be installed on a very tight centerline with this eight bank gripper



Articulating package palletizing end effector tooling system



# MODULAR AUTOMATION SOLUTIONS

## UNIQUE ADVANTAGES •• YOUR LEAN BENEFITS!

- Easy to Design •• Reduce and simplify system design time
- DIRECTCONNECT™ Technology •• Improve repeatability and accuracy
- Easy to Order •• Simple steps to walk you through your finished design
- Comprehensive Digital Documentation •• Reference at your fingertips
- Superior Customer Support •• No hang-ups! Speak one-on-one with an engineer for immediate answers
- Infinite Configurations •• Electric and pneumatic product combinations offer an unlimited number of motions
- On-Time Delivery •• No delays to your project
- Work with Experts •• FREE! Use us as an expert consultant to your team!

## DIRECTCONNECT™

DE-STA-CO's unique DIRECTCONNECT™ system eliminates the need for adaptor plates, providing easy and efficient modular automation connectivity. By using standardized mounting patterns, DIRECTCONNECT™ provides the flexibility necessary to meet any automation requirement.

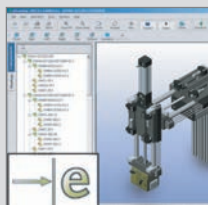


## AN INDUSTRY FIRST



### APPLICATIONS WORKSHEET

- All information gathered in a controlled format



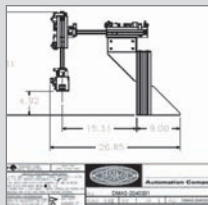
### E-DRAWINGS

- 3D model format with built-in viewer
- Zoom, rotate and pan exploded views



### FORMAL SYSTEM QUOTE

- Pricing and shipping delivery information

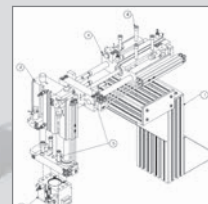


### 2D DIMENSIONAL DRAWINGS

- View 2D line drawings
- Basic overall dimensions of your system

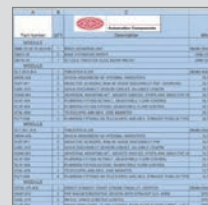
### EXPLODED SYSTEM VIEW

- Exploded system view with balloon numbers



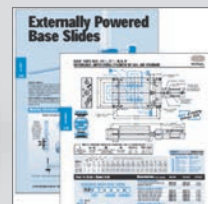
### BILL OF MATERIALS

- Bill of materials with kit order numbers



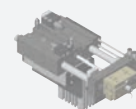
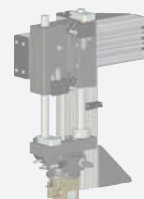
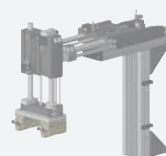
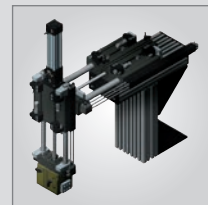
### CATALOG DATASHEETS

- Datasheets specific to your system

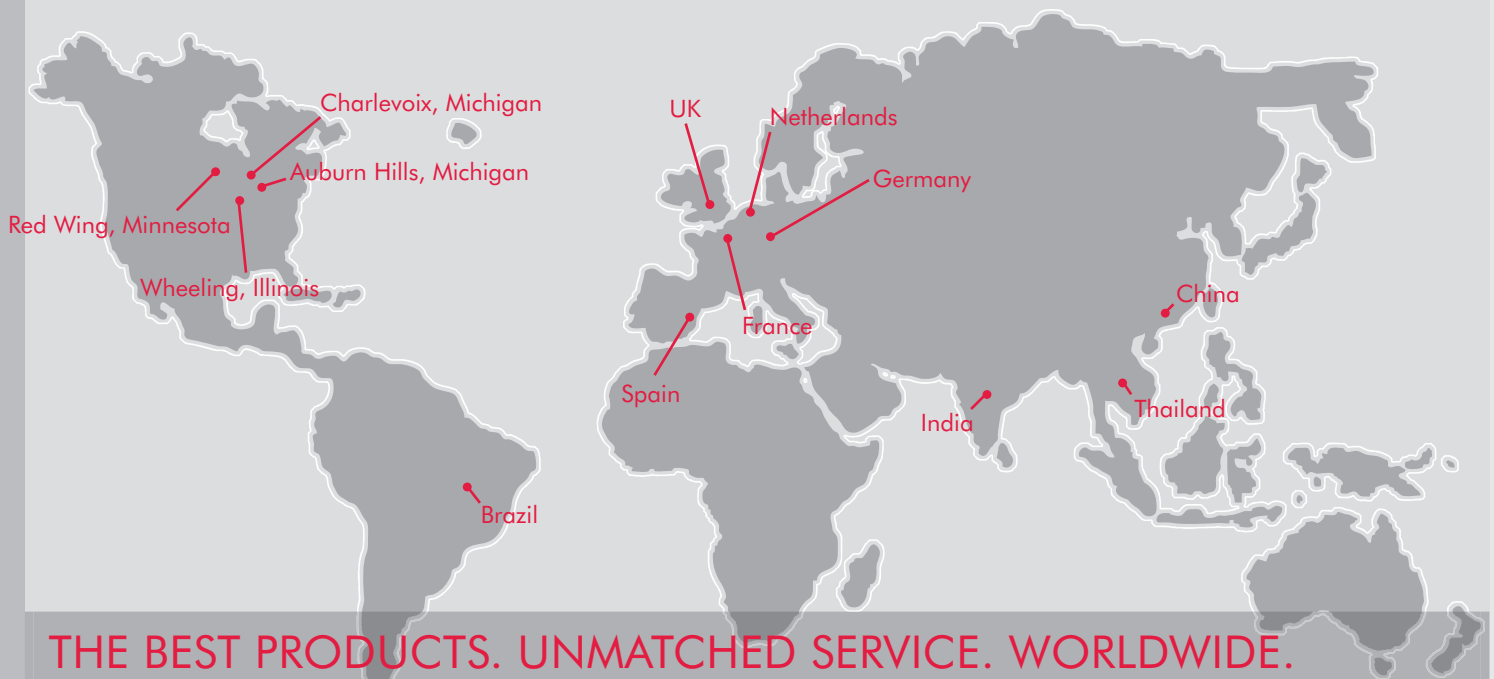


### 3D CAD MODELS

- Available in virtually any CAD format



# A GLOBAL PRESENCE



## THE BEST PRODUCTS. UNMATCHED SERVICE. WORLDWIDE.

With a support network spanning the globe, DE-STA-CO offers consistent, comprehensive service to any location in the world. Whether your operations are localized or span multiple continents, you will always have access to the highest levels of customer service and technical support.

### WWW.DESTACO.COM

Our global website is a one-stop engineering resource center available to customers worldwide. Users have total access to comprehensive product information, data sheets and CAD information.



### OUR GLOBAL WEBSITE ALSO OFFERS:

- Access to local sales representatives and dealers
- Sizing software
- Customer service access
- Expert application advice
- Training information
- Downloadable literature

### EXTENSIVE CAD CAPABILITIES

DE-STA-CO supports a wide variety of CAD programs, ranging from AutoCAD to SolidWorks. Our innovative online, digital catalog features a 3D CAD library that allows engineers to configure individual 3D models from DE-STA-CO's extensive product lines.

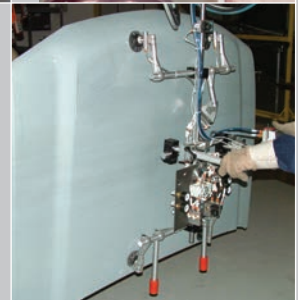
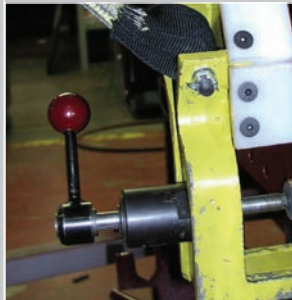
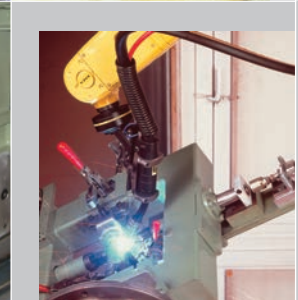
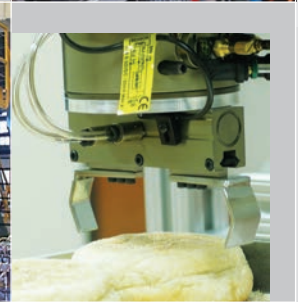
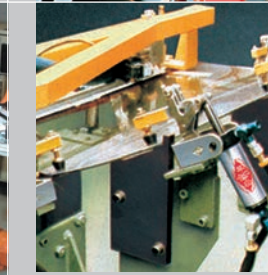
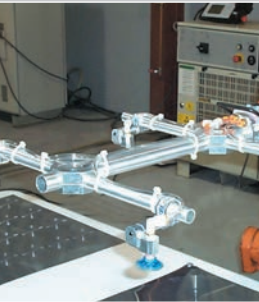
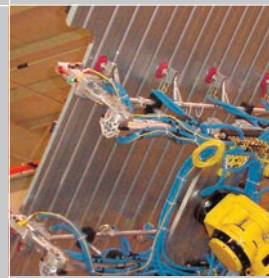
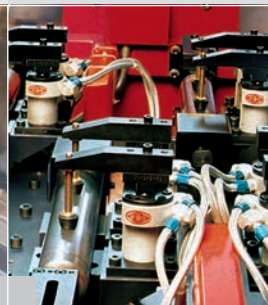
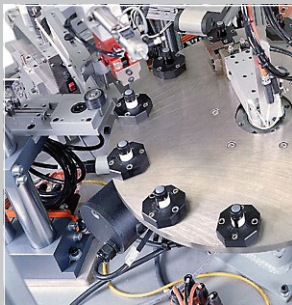
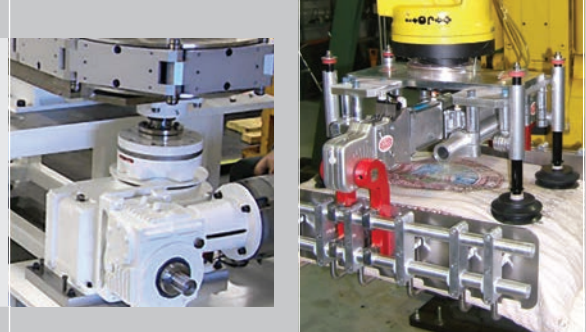
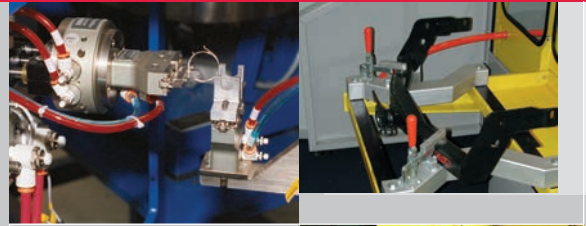




# SOLUTIONS FOR EVERY APPLICATION

Today's manufacturing challenges are tougher than ever. Regardless of your application, DE-STA-CO offers workholding and automation solutions to meet your needs.

OUR PRODUCTS ARE IDEAL FOR A WIDE RANGE OF INDUSTRIES AND MANUFACTURING PROCESSES.



# COMP

## WORKHOLDING SOLUTIONS

From the invention of the first toggle clamp in 1936, DE-STA-CO has maintained its leadership in workholding products.



A DOVER COMPANY

## Workholding

- DE-STA-CO offers the widest variety of manual, hydraulic and pneumatic products on the market
- Durable and reliable end effectors secure workpieces and materials during transfer
- Flexible workholding selection applies to all parts, ranging from small and delicate to large and heavy
- Availability of specials and custom components ensures a perfect solution to your specific applications
- All DE-STA-CO workholding products benefit from the full support of Team DE-STA-CO



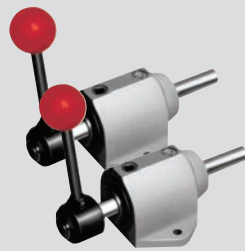
Vertical Clamps



Horizontal Clamps



Straight Line Action Clamps



Variable Stroke Clamps



Plier Clamps



Latch Clamps



Stainless Steel Clamps



DE-STA-CO® Toggle Lock Plus



CARVER Clamps



Pneumatic Toggle Clamps



Hydraulic & Pneumatic Swing Clamps



Pneumatic Pin Clamp



Enclosed Power Clamp



Electric Power Clamps



Retractable Pin Package



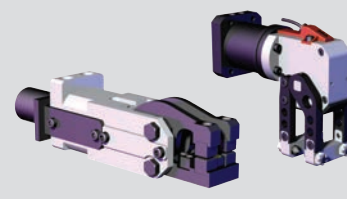
Hydraulic Power Units



Lightweight Power Clamps



Mini-Design Power Clamps



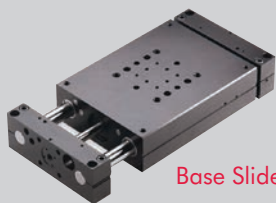
Cam Style Sheet Metal Grippers



High Temperature Grippers



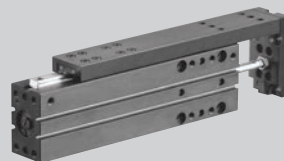
# E H E N S I



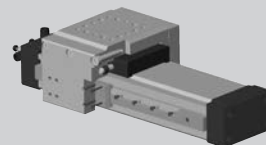
Base Slides



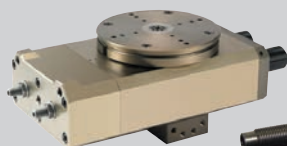
Linear Thrusters



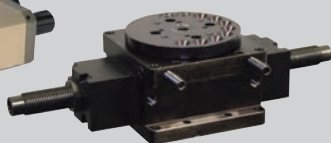
Rail Bearing Slides



Gantry Slides



Rotary Actuators



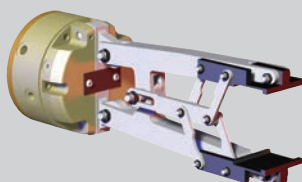
Feed Escapements



Cleanroom Grippers



Angular Grippers



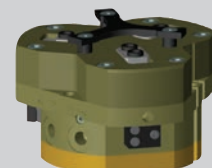
High Temperature Angular Grippers



Miniature Grippers



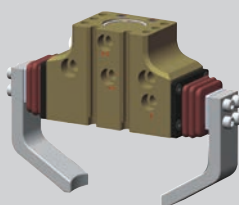
Lightweight Parallel Grippers



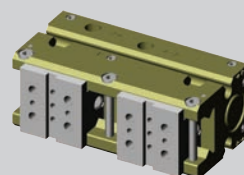
Three Jaw Parallel Grippers



Electric Parallel Grippers



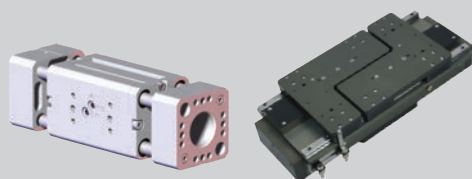
Highly Configurable Parallel Grippers



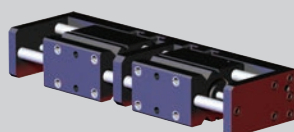
Precision Parallel Grippers



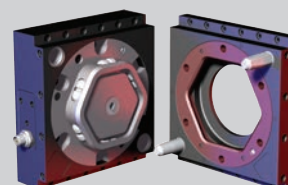
Food Grade Grippers



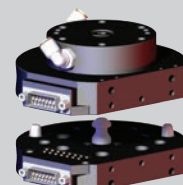
Long Stroke Parallel Grippers



Heavy Duty Parallel Grippers



Robotic Automatic Tool Changers



# VE SOLU

## AUTOMATION SOLUTIONS

With an incredibly broad variety of standard-setting products, DE-STA-CO raises the bar for total automation solutions.

- Complementary engineered products can be tailored to meet your unique automation needs
- Broad products lines include motion control components, robotics, conveyor systems and other automation components
- All DE-STA-CO brands benefit from the full global support of Team DE-STA-CO
- Flexibility of DE-STA-CO lean systems maximizes your productivity



A DOVER COMPANY

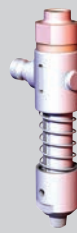
**Automation**  
**Robohand FERGUSON**  
**CAMCO**



Compliance Devices



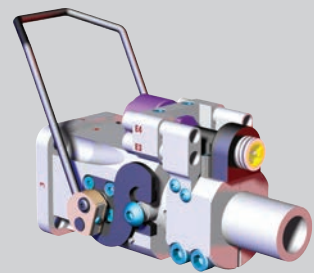
ARV - Auto Release Venturi Vacuum Generator/Cup Mount



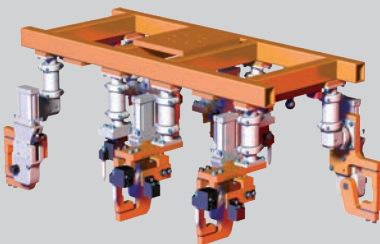
Spring Cup Mounts



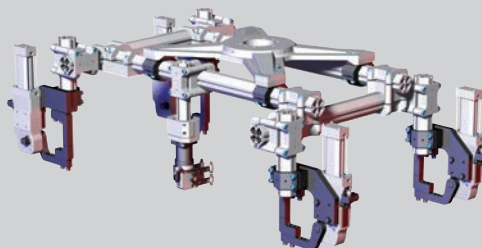
Vacuum Products



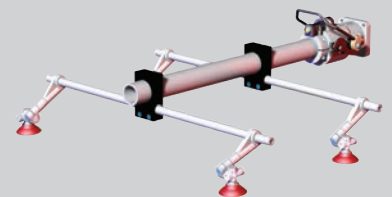
Manual Tool Changers



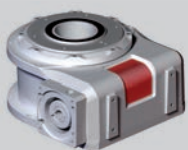
Geometric End Effector – SpiderGrip™



Modular End Effector – Bodybuilder™



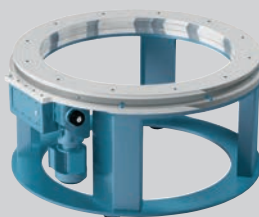
Standard and Micro Round Tooling Systems



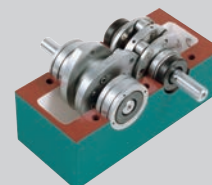
Index Drives



Med-Redi Index Drives



Ring Index Drives



Parallel Index Drives



IM-pAC AC Drives

**Robohand**

**CAMCO**

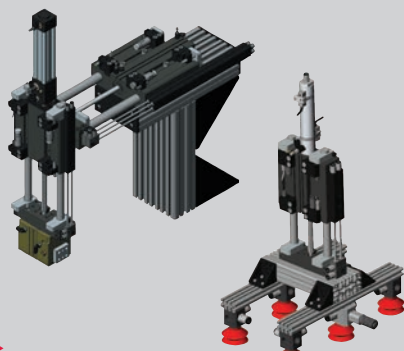
**FERGUSON**

w w w . d e s t a c o . c o m

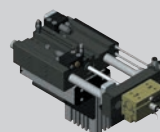
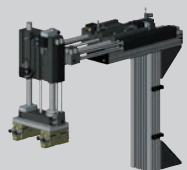
# UTIONS

## **DIRECTCONNECT™**

Our DIRECTCONNECT™ mounting pattern requires no adapter plates, allowing for truly modular connectivity to other DIRECTCONNECT™ products.



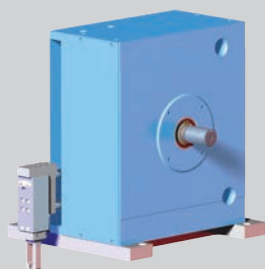
**DIRECTCONNECT™**  
Pick and Place Modules



Modular Systems



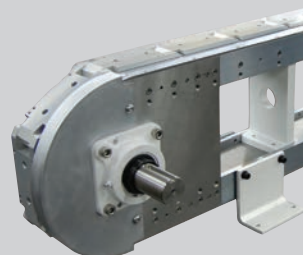
Rotary Parts Handlers



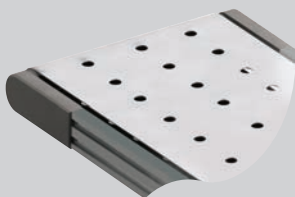
Linear Parts Handlers



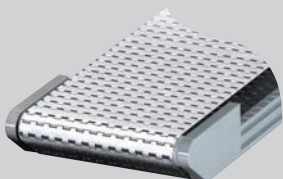
Rite-Link Conveyors



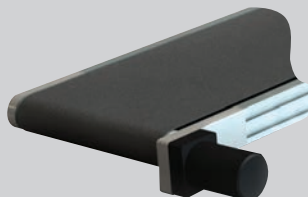
Precision Link Conveyors



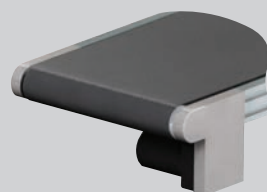
Belt Drive Vacuum Conveyors



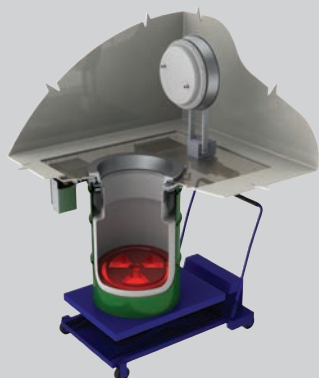
Modular Plastic Conveyors



Direct Drive Conveyors



Offset Drive Conveyors



Bagless Transfer System  
(Central Research Laboratories)



Rapid Transport Port  
(Central Research Laboratories)



Three Piece Manipulator  
(Central Research Laboratories)

**Robohand**

**CAMCO**

**FERGUSON**

w w w . d e s t a c o . c o m





A **DOVER** COMPANY

## Workholding

- Widest variety of workholding products
- High durability and reliability
- Flexible solutions for all applications
- Custom products for unique requirements

## Automation

- Broad range of engineered, automation products
- Complementary products for modular integration
- Unmatched accuracy, reliability and performance
- Unparalleled global sales, service and engineering support

## DE-STA-CO – WORLDWIDE

### NORTH AMERICA

DE-STA-CO Headquarters  
 Auburn Hills, Michigan  
 Tel: 1.248.836.6700  
 Marketing: [marketing@destaco.com](mailto:marketing@destaco.com)  
 Customer Service: [customerservice@destaco.com](mailto:customerservice@destaco.com)  
 Charlevoix, Michigan  
 Tel: 1.888.DESTACO  
 Customer Service: [customerservice@destaco.com](mailto:customerservice@destaco.com)  
 Wheeling, Illinois  
 Tel: 1.800.645.5207  
 Customer Service: [camco@destaco.com](mailto:camco@destaco.com)  
 Red Wing, MN (Central Research Laboratories)  
 Tel: 651.385.2142  
 Customer Service: [sales@centres.com](mailto:sales@centres.com)

### EUROPE

Germany  
 Tel: +49-6171-705-0  
 Customer Service: [europe@destaco.com](mailto:europe@destaco.com)  
 France  
 Tel: +33-1-3996-5000  
 Customer Service: [france@destaco.com](mailto:france@destaco.com)  
 UK  
 Tel: +44-1902-797980  
 Customer Service: [uk@destaco.com](mailto:uk@destaco.com)  
 Spain  
 Tel: +34-936361680  
 Customer Service: [spain@destaco.com](mailto:spain@destaco.com)  
 Netherlands  
 Tel: +31-297285332  
 Customer Service: [benelux@destaco.com](mailto:benelux@destaco.com)

### SOUTH AMERICA

Brazil  
 Tel: 0800-124070  
 Customer Service: [samerica@destaco.com](mailto:samerica@destaco.com)

### ASIA

Thailand  
 Tel: +66-2-326-0812  
 Customer Service: [info@destaco.com](mailto:info@destaco.com)  
 China  
 Tel: +86-21-6081-2888  
 Customer Service: [china@destaco.com](mailto:china@destaco.com)  
 India  
 Tel: +91 80 41123421-426, 22275533  
 Customer Service: [india@destaco.com](mailto:india@destaco.com)

## DE-STA-CO Europe – Distributors

ALGERIA  
 SOUDETOLÉ S a r l  
 Tel: +213 24 880319  
 e-mail: [christian-stenger@wanadoo.fr](mailto:christian-stenger@wanadoo.fr)

AUSTRIA  
 HUB Herzig Unternehmensberatung  
 Tel: +49 89 3105692  
 e-mail: [utreu@herzig-ub.de](mailto:utreu@herzig-ub.de)

BELARUS  
 IOOO RIVAL SVARKA  
 Tel: +375 17 385 15 75  
 e-mail: [wojciech.wierzba@rywal.com.pl](mailto:wojciech.wierzba@rywal.com.pl)

BOSNIA & HERZEGOVINA  
 Refer to Halder d.o.o., Slovenia

BULGARIA  
 Kammarton Bulgaria Ltd.  
 Tel: +359 2 926 60 60  
 e-mail: [kameliya.oblachka@kammarton.com](mailto:kameliya.oblachka@kammarton.com)

CROATIA  
 Refer to Halder d.o.o., Slovenia

CZECH REPUBLIC  
 PROEXPO plus, s.r.o.  
 Tel: +42 0 317 7 01 102  
 e-mail: [jstepan@proexpoplus.cz](mailto:jstepan@proexpoplus.cz)

EXACTEC  
 systémy a komponenty pro automatizaci  
 Tel: +42 485 151 447  
 e-mail: [info@exactec.com](mailto:info@exactec.com)

DENMARK  
 Pneumatics ApS (Workholding)  
 Tel: +45 86 453 453  
 e-mail: [mail@pneumatics.dk](mailto:mail@pneumatics.dk)

Norm-Teknik as (Automation)  
 Tel: +45 74560100  
 e-mail: [nt@norm-teknik.dk](mailto:nt@norm-teknik.dk)

EGYPT  
 Integrated Equipment Company  
 Tel: +20 22 70 09 61  
 e-mail: [ieco@link.net](mailto:ieco@link.net)

ESTONIA  
 Refer to Rywal RHC, Poland

FINLAND  
 Teräskonttori Oy  
 Tel: +358 30 600 3611  
 e-mail: [vesa.heikkinen@teraskonttori.fi](mailto:vesa.heikkinen@teraskonttori.fi)

FRANCE  
 Fenwick S.A.  
 Tel: +33 1 40 10 67 00  
 e-mail: [cpittioni@fenwick.fr](mailto:cpittioni@fenwick.fr)

GREECE  
 MEK Maria Koutseris & Co.  
 Tel: +30 210 52 20 557-559  
 e-mail: [info@mek.com.gr](mailto:info@mek.com.gr)

HUNGARY  
 Kiraly Trading Hungary GmbH  
 Tel: +36 13 07 38 00  
 e-mail: [kiraly@kiralytrading.hu](mailto:kiraly@kiralytrading.hu)

ITALY  
 IBD srl  
 Tel: +39 011 95 88 776  
 e-mail: [rpizzonia@ibdonline.org](mailto:rpizzonia@ibdonline.org)

LITHUANIA  
 UAB "Rywal LT"  
 Tel: +37 37 473235  
 e-mail: [wojciech.wierzba@rywal.com.pl](mailto:wojciech.wierzba@rywal.com.pl)

MACEDONIA  
 Refer to Halder d.o.o., Slovenia

MOLDOVA  
 Refer to SC Parcon SRL, Rumania

MONTENEGRO  
 Refer to Halder d.o.o., Slovenia

NORWAY  
 Bergsli Hantek A.S.  
 Tel: +47 35 50 35 00  
 e-mail: [kran.handtering@bergsli.no](mailto:kran.handtering@bergsli.no)

POLAND  
 Cloos Polska Sp. zo. o.  
 Tel: +48 74 851 86 -60 or -76  
 e-mail: [t.jastrzebski@cloos.pl](mailto:t.jastrzebski@cloos.pl)

Festo Polska Sp. Zo. o.  
 Tel: +48 22 72 04 166  
 e-mail: [Ireneusz\\_Gwizdowski@festo.com](mailto:Ireneusz_Gwizdowski@festo.com)

Rywal RHC  
 Tel: +48 56 66 93 821 or 800  
 e-mail: [wojciech.wierzba@rywal.com.pl](mailto:wojciech.wierzba@rywal.com.pl)

API Automatyka-Pneumatyka-Informatyka  
 Tel: +33 81 22 070  
 e-mail: [zp@api.bielsko.pl](mailto:zp@api.bielsko.pl)

Radius Radpol (Ferguson)  
 Tel: +48 22 72 04 166  
 e-mail: [info@radius-radpol.com.pl](mailto:info@radius-radpol.com.pl)

PORTUGAL  
 Refer to DE-STA-CO, Spain

ROMANIA  
 SC Parcon SRL  
 Tel: +40 265 253 088  
 e-mail: [comert@parcon.ro](mailto:comert@parcon.ro)

RUSSIA  
 OOO "Festo.RF"  
 Tel: +7 495 737 3400  
 e-mail: [festo@festo.ru](mailto:festo@festo.ru)

Refer to Rywal RHC, Poland

SWEDEN  
 DE-STA-CO Svenska AB  
 Tel: +46 31 691510  
 e-mail: [andreas.brandt@destaco.se](mailto:andreas.brandt@destaco.se)

FESTO AB  
 Tel: +46 406 990 684  
 e-mail: [leif.lindahl@festo.se](mailto:leif.lindahl@festo.se)  
 Jens S. Transmission AB (Ferguson)  
 Tel: +46 11 1980 00  
 e-mail: [stefan.jonsson@jens-s.se](mailto:stefan.jonsson@jens-s.se)

SERBIA  
 Refer to Halder d.o.o., Slovenia

SLOVAK REPUBLIC  
 D-S-C Slovensko s.r.o.  
 Tel: +421 908 912 557  
 e-mail: [licko@dscslovensko.sk](mailto:licko@dscslovensko.sk)

SLOVENIA  
 Halder d.o.o.  
 Tel: +38 62 61 82 646  
 e-mail: [danilo.zgrabic@halder.si](mailto:danilo.zgrabic@halder.si)

SOUTH AFRICA  
 Festo (Pty) Ltd.  
 Tel: +27 41 453 2087/8  
 e-mail: [charles\\_hulme@festo.com](mailto:charles_hulme@festo.com)

Clamping Technology  
 Tel: +27 82 576 7510  
 e-mail: [andre@clampingtechnology.co.za](mailto:andre@clampingtechnology.co.za)

SWITZERLAND  
 DE-STA-CO AG  
 Tel: +41 71 89 16 644  
 e-mail: [ady@destaco.ch](mailto:ady@destaco.ch)

TURKEY  
 DSC Mekatronik LTD. STI  
 Tel: +90 224 443 4680-81  
 e-mail: [info@dsc.com.tr](mailto:info@dsc.com.tr)

UKRAINE  
 Refer to Rywal RHC, Poland

Please visit  
**[www.destaco.com](http://www.destaco.com)**  
 for a distributor near you.

