



Angular grippers

<< Parallel grippers



Ball rail slides



<< Thruster slides



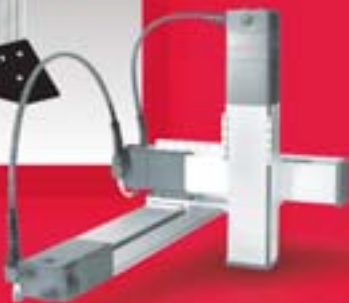
Rotary actuators

Mounting stanchions



<< Smart linear actuators

Feed escapements



Conveyors



AUTOMATION & WORKHOLDING SOLUTIONS Medical Manufacturing Industry



Unique manufacturing challenges require unique solutions.

MEDICAL MANUFACTURERS
FACE A UNIQUE SET OF
PRODUCTION REQUIREMENTS.
DE-STA-CO OFFERS A WIDE
ARRAY OF PRODUCTS
SPECIFICALLY DESIGNED
TO PROVIDE EFFICIENCY
AND RELIABILITY, WHILE
SIMPLIFYING THE HANDLING
OF MATERIALS IN A
MEDICAL MANUFACTURING
ENVIRONMENT.

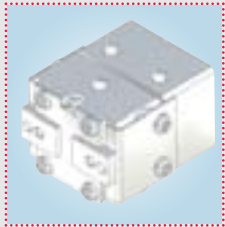
With a long history of serving the industry, DE-STA-CO understands the unique requirements of manufacturing and assembling medical devices. Our spectrum of products includes a broad selection suitable for class 10/100 cleanroom standards.

Through the use of corrosion-resistant materials, our automation and workholding components are able to achieve excellent reliability, even when consistently exposed to de-ionized water. Additionally, a wide range of DE-STA-CO products offer the soft touch required by the handling of delicate medical parts. Whatever the demands of your medical production environment, DE-STA-CO can provide an efficient solution to simplifying your material handling applications.



MORE THAN PRODUCTS. COMPLETE SOLUTIONS.

EXTENSIVE CAD CAPABILITIES



To ensure applicability to the broadest possible base of medical manufacturers, DE-STA-CO supports a wide variety of CAD programs, ranging from Catia to Unigraphics. All CAD formats are accessible through multiple channels, including our cutting-edge online digital catalog, located at www.destaco.com. This web-based 3D CAD library allows engineers to configure individual 3D models from DE-STA-CO's extensive array of workholding and automation products. The intuitive system is part of DE-STA-CO's commitment to providing the exact CAD information you need, whenever you need it.

WWW.DESTACO.COM

Our global website is a constant resource for our customers worldwide. Designed to be a one-stop engineering resource center, our website was developed by engineers for engineers. Presented in multiple languages, www.destaco.com provides detailed comprehensive product information, data sheets and CAD information twenty-four hours a day, seven days a week.



OUR GLOBAL WEBSITE ALSO OFFERS:

- Access to local sales representatives and dealers
- Expert application advice
- Sizing software
- Training information
- Customer service access
- Downloadable literature

TECHNICAL EXPERTISE, SERVICE AND SUPPORT

At DE-STA-CO, we maintain the highest possible standards of service and support across all of our product offerings. Our employees possess extensive engineering knowledge and receive comprehensive training on all of our products. When you partner with DE-STA-CO, you work with specialists that fully understand your operations, our products and how the two work together to provide you with value. Our customer service staff is available via a toll-free phone line, fax, email and our company website, so that you can reach us through whatever medium is most convenient.



MODULAR AUTOMATION SOLUTIONS



TO RECEIVE THE HIGHEST POSSIBLE BENEFIT from an automation system, you need a solution tailored to your specific applications. DE-STA-CO approaches automation from a modular perspective, using our unique DIRECTCONNECT™ technology to allow for quick and easy mounting of components without adaptor plates. This method allows for virtually unlimited motions using up to four axes. By offering a limitless variety of configurations, DE-STA-CO has an automation system perfectly suited for your operations.

UNIQUE ADVANTAGES

YOUR LEAN BENEFITS

- Easy to Design • • Reduce and Simplify System Design Time
- DIRECTCONNECT™ Technology • • Improve Repeatability and Accuracy
- Easy to Order • • Simple Steps to Walk You Through Your Finished Design
- Comprehensive Digital Documentation • • Reference at Your Fingertips
- Superior Customer Support • • No Hang-ups! Speak One-on-one with an Engineer for Immediate Answers
- Infinite Configurations • • Electric and Pneumatic Product Combinations Offer an Unlimited Number of Motions
- On-Time Delivery • • No Delays to Your Project
- Work with Experts • • FREE! Use Us as an Expert Consultant to Your Team!

DIRECTCONNECT™

DIRECTCONNECT™

DE-STA-CO's unique DIRECTCONNECT™ system eliminates the need for adaptor plates, providing easy and efficient modular automation connectivity. By using standardized mounting patterns, DIRECTCONNECT™ provides the flexibility necessary to meet any automation requirement.



Dual Gripper Two Axis Box Motion



Three Axis Box Motion Vacuum Pick and Place



Servo "X", "Y", and "Z" with Pneumatic Rotary and Gripper



DCM-L1 Light Duty Conveyor Series

CUSTOMIZED SPECIAL PRODUCTS

EACH OF YOUR APPLICATIONS IS UNIQUE and sometimes it takes more than a standard product to achieve maximum performance in medical manufacturing. When such an occasion arises, DE-STA-CO's special engineering service department will work extensively to meet that need by modifying an existing product or creating an entirely new component. Throughout this process, you will work with a highly trained engineer who understands your specific needs. Once a special product is created, it is assigned a part number and entered into our system. This guarantees a quick response to future orders, even if you are the only company in the world that is using that specific product.

- BEST SOLUTIONS.
- UNIQUE PART NUMBERS.
- EXPERT SUPPORT.



Application required grippers to be installed on a very tight centerline with this 8 bank gripper.



Long stroke, non-synchronous back to back gripper for pick and place application.



Peek gripper



Application required a gripper with long stroke and high grip force in rim handling applications.



Latch clamp with electroless nickel plating.



Plier clamp modified for mounting plate.



Stainless steel clamp with special hook and locking tab.



High temperature pneumatic clamp.



GRIPPERS FOR THE MEDICAL INDUSTRY

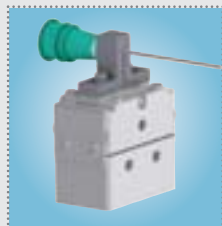
RPLC & RPMC CLEANROOM PARALLEL GRIPPERS

- **Precision applications:** Patented preloaded Dual-V roller bearings provide superior jaw support for excellent part position and repeatability.
- **Class 10/100 cleanroom:** Internal components are lubricated with a cleanroom grade grease, and a scavenge port reduces the escape of particulate.



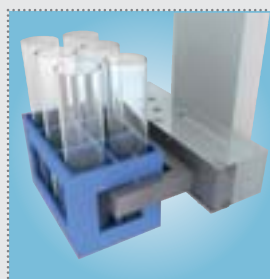
RPLC

- **Long finger applications:** Rigid design supports increased finger length.
- **Non-synchronous motion:** Option allows for pick and place at an off-center point.



RPMC

- **Miniature size:** Compact design enables handling of small parts in small spaces.
- **Top manifold:** Top manifold allows mounting of grippers in close array.

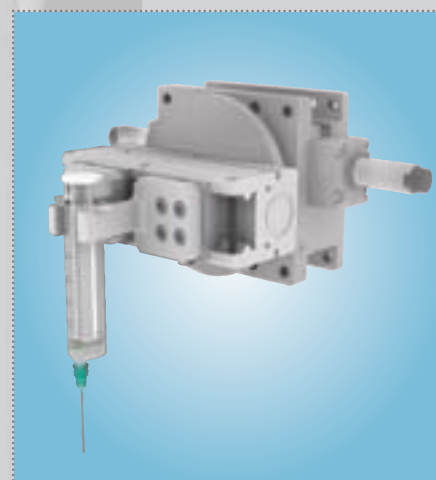


Our RPLC and RPMC grippers are suitable for use in class 10/100 cleanroom environments and are ideal for the most precise laboratory applications involving even the most delicate parts.

NEW

DPP PRECISION PARALLEL GRIPPER

- **Precision applications:** Patented preloaded Dual-V roller bearings provide superior jaw support for excellent part position and repeatability.
- **Delicate part handling:** Low friction mechanism allows for repeatable gripping forces for holding delicate parts.
- **Multiple mounting locations:** Nearly all sizes contain DIRECTCONNECT™ top mounting and DIRECTCONNECT™ thru hole mounting on the back side.
- **Multiple air port locations:** Tapped air ports are available on the top, front and both sides, and the top port is also manifold ready.
- **Long finger applications:** Rigid design supports increased finger length.
- **Non-synchronous motion:** Option allows for pick and place at an off-center point.
- **Spring return:** Optional double acting spring assist provides increased force, failsafe operation or single-action operation.
- **Sensing options:** Magneto-resistive or inductive proximity sensors can be added to sense up to four positions.



Our new DPP grippers offer the convenience of modular automation, and are ideal for applications requiring soft touch and the use of long fingers in a low pressure environment.



DPP 10-06

DIRECTCONNECT™

NEW

DCT ANGULAR GRIPPERS

- **Full jaw opening:** 180° opening allows direct feed of part, avoiding any release movement by a robot or by the actuator.
- **Compact size:** Compact design is designed for use in confined spaces.
- **Harsh environments:** Shielded design repels chips and other particulate from internal drive mechanism.



DCT 40M



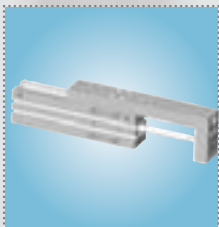
The compact design of our **DCT** angular grippers are ideal for use in confined spaces.

DIRECTCONNECT™

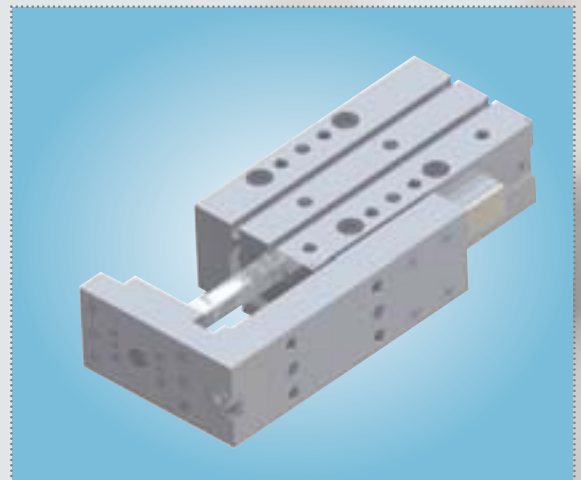
NEW

DLM MINI BALL RAIL SLIDE

- **Flexible air porting:** Tapped air ports are located on the rear, bottom and each side, and bottom air ports can be manifold or o-ring sealed.
- **Stroke adjustments:** Retract and extend adjustments provide precise positioning with infinite stroke adjustability.
- **Multiple mounting locations:** DIRECTCONNECT™ tapped and dowel mounting is available on the tool plate and body, as is thru-body mounting.
- **Sensing:** Optional adjustable magneto-resistive sensors through the full stroke range can sense up to eight positions.
- **Double bearing option:** Use of double bearings allows for longer strokes with greater load and moment capacity.
- **Precision hard stop option:** Delrin extend and retract internal stops provide increased repeatability.



DLM 07-38



Ideal for the the packaging and assembly of small and delicate parts, the **DLM** slide offers excellent bearing support and power for its size.

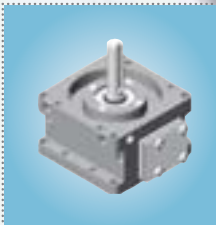
DIRECTCONNECT™

ROTARY ACTUATORS FOR THE MEDICAL INDUSTRY

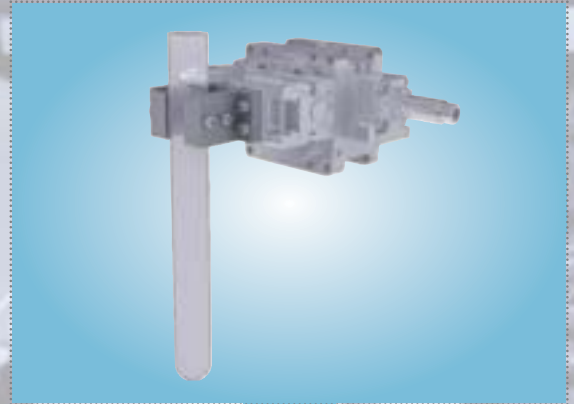
NEW

DRF ROTARY ACTUATOR

- **High precision:** Design excels in applications requiring precision end stop position and zero backlash.
- **Excellent flexibility:** Maximum flexibility is provided through tapped and thru flange on top and bottom mounting surfaces and a DIRECTCONNECT™ tapped pattern on the bottom flange.
- **Modular integration:** DIRECTCONNECT™ allows for use with grippers or other components without requiring adaptor plates.



DRF 075



The **DRF** rotary actuator offers the highest level of precision, repeatability and reliability in applications involving the packaging and assembly of small parts.

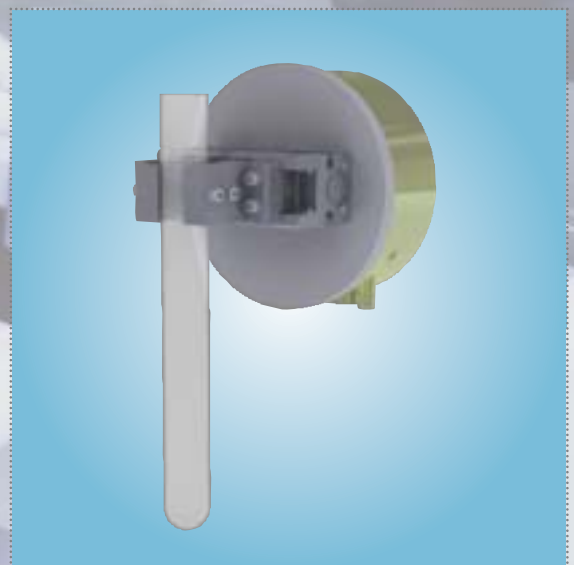
DIRECTCONNECT™

RR LIGHT DUTY ROTARY ACTUATOR

- **Compact:** Small size, low profile and bearing supported turn table is ideal for payloads up to 3 lbs.
- **Corrosion resistive:** Optional sealed flange with corrosion resistant hardware available.
- **High precision:** Zero backlash, preloaded ball bearings, and slip fit dowel pins offer maximum precision and repeatability.
- **Air manifold:** Option eliminates twisted airlines.



RR 28



The **RR** rotary actuator is ideal for payloads up to 3 lbs.

ACTUATORS & MOUNTING STANCHIONS FOR THE MEDICAL INDUSTRY

SMART LINEAR ACTUATOR

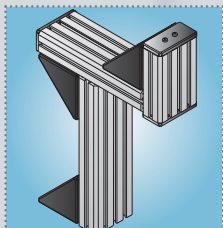
- **Smart motor technology:** Drive is located on the actuator, eliminating the need for an external controller in most cases.
- **Simplified operation:** No external computer is required for simple 2-3 axis synchronized motion.
- **Integrated solution:** No upfront engineering time is required for matching motors with drives.
- **Extended performance:** Control by just six conductors results in a lighter cable bundle, improving product life cycle.
- **Flexible integration:** Our DIRECTCONNECT™ design allows our SMART MOTOR slides to easily integrate with our DIRECTCONNECT™ pneumatic components.



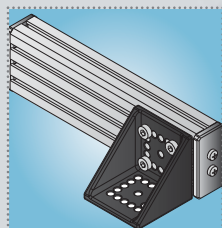
Our **SLA** operating software is PC-based, which allows for alternate software capabilities, including LabVIEW. Its on-board servo control allows for local machine control and smaller control panels, which make it ideal for laboratory environments.

DMM MOUNTING STANCHIONS

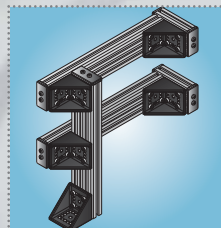
- **DIRECTCONNECT™:** Base slides and thrusters can be quickly and easily mounted.
- **Proven design:** Construction from extruded aluminum beams includes t-slots that correspond to DIRECTCONNECT™ mounting patterns.
- **Diverse selection:** The largest variety of pre-engineered designs in the industry guarantees maximum flexibility.
- **Easy set-up:** Assembly requires aligning of disassembly marks and then screwing together of components with the included Allen wrench.



08-05



08-06



08-10



The **DMM** mounting module makes laboratory automation simpler and easier in even the most challenging environments.

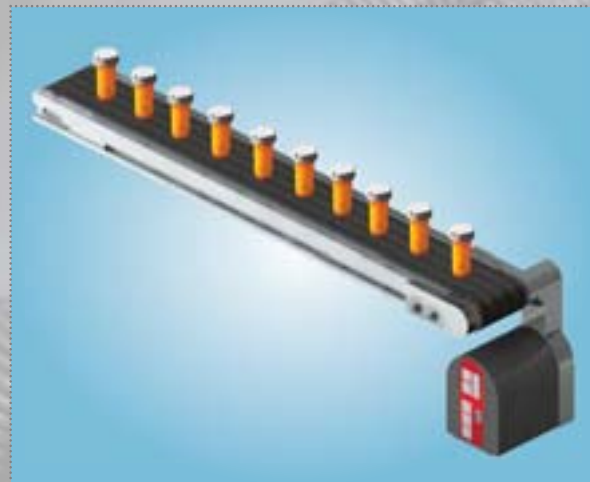
DIRECTCONNECT™

CONVEYORS & OTHER COMPONENTS FOR THE MEDICAL INDUSTRY

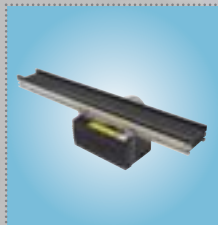
NEW

CONVEYORS

- **Flexible options:** Assembled and component-based systems offer lower prices and shorter delivery times.
- **Comprehensive solutions:** We offer numerous conveyor system options for light, medium and heavy duty applications, as well as modular conveying systems.
- **Intelligent control electronics:** Regulate the belt speed independent of load.
- **Fast and easy belt change:** Belts can be changed in less than eight minutes for the center drive, and only three minutes for the end drive.



LIGHT-DUTY
CONVEYORS



MEDIUM-DUTY
CONVEYORS



HEAVY-DUTY
CONVEYORS



PALLETIZED SYSTEMS



ACCESSORIES

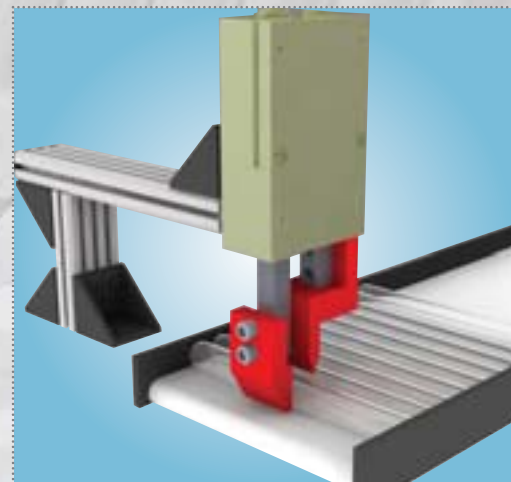
NEW

RFE FEED ESCAPEMENTS

- **Part separation:** Offers the most effective mechanism for separating components fed from a track or conveyor.
- **Failsafe locking fingers:** Eliminate the premature retraction of the extended finger by using a locking key design, minimizing part jamming and multiple parts feeding at a time.
- **Sealed design:** Prevents internal component wear
- **Flexible:** Can be mounted using top, bottom or face surface



RFE 12M

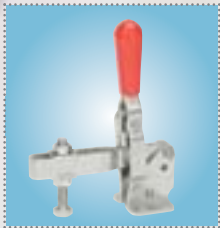


Our **RFE** feed escapements are ideal for separating components fed from a conveyor.

MANUAL AND PNEUMATIC CLAMPS FOR THE MEDICAL INDUSTRY

STAINLESS STEEL CLAMPS

- **Maximum reliability:** Corrosion-resistant and heat-resistant steel guarantee long product life, even in harsh conditions.
- **Safe design:** Oil-resistant, ergonomically shaped DE-STA-CO handle grip increases operational safety.
- **Uncompromised quality:** All surfaces are smooth and free of burrs.
- **Durable construction:** Clamp rivets are made of stainless steel.



201-USS, 202-USS,
207-USS

STAINLESS STEEL VERTICAL CLAMPS

- Bar openings range from 104° to 110°.
- Holding capacity ranges from 450 N – 2.800 N.



205-USS

STAINLESS STEEL HORIZONTAL CLAMPS

- Bar openings range from 90° to 92°.
- Holding capacity ranges from 450 N – 2.200 N.



323-SS

STAINLESS STEEL LATCH CLAMPS

- DE-STA-CO® Toggle Lock Plus models feature thumb-release lever for locking in secure position.
- Holding capacity ranges from 1.600 N – 27.000 N.

PNEUMATIC SWING CLAMPS

- Innovative compact design provides fast operation and excellent reliability
- Access to the workpiece from above
- Compact design for restricted space applications
- High flexibility in the application – clamps different workpiece sizes



89R



9500 SERIES

A TRUE GLOBAL PRESENCE

Through a constant commitment to the Team DE-STA-CO philosophy, we draw from our worldwide pool of information and resources to offer the highest levels of service to each of our customers, regardless of geographic location. Our status as a truly global company empowers us to improve the global competitiveness of your operations. Whatever your automation or workholding need, Team DE-STA-CO has the best possible solution.



DE-STA-CO – worldwide

NORTH AMERICA

DE-STA-CO Headquarters
Auburn Hills Michigan
Tel: 1.248.836.6700
Marketing: marketing@destaco.com

DE-STA-CO Workholding Products
Auburn Hills Michigan
Tel: 1.888.DESTACO
Customer Service:
cs-workholding@destaco.com

DE-STA-CO Automation Products
Monroe, Connecticut
Tel: 1.888.DESTACO
Customer Service:
cs-automation@destaco.com

DE-STA-CO Automotive Products
Charlevoix, Michigan
Tel: 1.888.DESTACO
Customer Service:
cs-automation@destaco.com

EUROPE

DE-STA-CO Europe (Germany)
Tel: +49-6171-705-0
Customer Service: europe@destaco.com

DE-STA-CO France
Tel: + 33-1-3996-5000
Customer Service: france@destaco.com

DE-STA-CO UK
Tel: +44-1902-797980
Customer Service: uk@destaco.com

DE-STA-CO Spain
Tel: +34-936361680
Customer Service: spain@destaco.com

DE-STA-CO Benelux
Tel: +31-297285332
Customer Service: benelux@destaco.com

ASIA

DE-STA-CO Thailand
Tel: +66-2-326-0812
Customer Service: info@destaco.com

DE-STA-CO Shanghai Co., Ltd.
Tel: +86-21-5423-4435
Customer Service: china@destaco.com

SOUTH AMERICA

DE-STA-CO Brazil
Tel: 0800-124070
Customer Service: samerica@destaco.com

INDIA

DE-STA-CO (Dover India, Ltd.)
Tel: +91 80 22211961, 22275533
Customer Service: info@destaco.com

DE-STA-CO Europe – Distributors

AUSTRIA
Büll & Strunz Werkzeughandels GmbH
Tel: +43 22 36 29 077 7223
e-mail: g.horvath@buellstrunz.at
e.lang@buellstrunz.at

CROATIA
Halder d.o.o.
Refer to SLOVENIA

CZECH REPUBLIC
Ing. Lubomir Siman
Tel: +42 0 2 4191 1998
e-mail: lsiman@destaco.com

DE-STA-CO Distribution Center
PROEXPO plus, s.r.o.
Tel: +42 0 317 7 01 102
e-mail: stepanj1@quick.cz

DENMARK
Refer to DE-STA-CO Benelux

EGYPT
Integrated Equipment Company
Tel: +20 22 70 09 61
e-mail: ieco@link.net

FINLAND
TERÄSKONTTORI OY
Tel: +35 83 31 41 22 16
e-mail: sami.suominen@teraskonttori.fi
info@teraskonttori.fi

FRANCE
FENWICK S.A.
Tel: +33 1 40 10 67 00
e-mail: cpittioni@fenwick.fr

GREECE
MEK MARIA KOUTSERIS & CO.
Tel: +30 210 52 20 557-559
e-mail: mekouts@hellasnet.gr

HUNGARY
Király-Torma
Tel: +36 13 07 38 00
e-mail: kiraly@kiraly-torma.hu

ISRAEL
Arnold Trading Co.
Tel: +972 355 81 313
e-mail: arnold1@inter.net.il

ITALY
IBD s.r.l.
Tel: +39 011 95 88 776
e-mail: rpizzonia@ibdonline.org

NORWAY
BERGSLI Hantek A.S.
Tel: +47 35 50 35 00
e-mail: kran.handtering@bergsli.no

POLAND
Cloos Polska
Tel: +48 74 851 86-60 or -76
e-mail: t.jastrzebski@cloos.pl
a.nieroba@cloos.pl

Rywal RHC
Tel: +48 56 66 93-821 or -800
e-mail: wojciech.wierzba@rywal.com.pl

Festo Polska
Tel: +48 22 72 04 166
e-mail: jacek_budzynski@festo.com

PORTUGAL
FIXSOLDA
Tel: +351 21 96 24 733 or -084
e-mail: Fixsolda@sapo.pt

RUMANIA
SC Parcon SRL
Tel: +40 365 410 572
e-mail: comert@parcon.ro

SLOVAK REPUBLIC
KJELLBERG SLOVENSKO s.r.o.
Tel: +421 43 42 21 544
e-mail: Obchod@kjellberg.sk

SLOVENIA
Halder d.o.o.
Tel: +38 62 61 82 646
e-mail: danilo.zgrabic@halder.si

SOUTH AFRICA
Lubrication Equipment Pty.
Tel: +27 11 49 38 235
e-mail: carolin@lubrequip.co.za

FESTO (Pty) Ltd
Tel: +27 41 453 2087 / 8
e-mail: charles.hulme@festo.com

SWEDEN
DE-STA-CO Svenska AB
Tel: +46 84 64 89 11
e-mail: klas.brandt@destaco.se
kent.boholm@destaco.se

FESTO AB
Tel: +46 45 53 62 884
e-mail: leif.lindahl@festo.se

SWITZERLAND
DE-STA-CO AG
Tel: +41 71 89 16 644
e-mail: ady@destaco.ch

TURKEY
DSC Mekatronik Yedek Parça
Tel: +90 224 443 4680 or -81
e-mail: info@dsc.com.tr

Please visit
www.destaco.com
for a distributor near you.



Positioning our customers for productivity.