

Round End Effector Tooling - Structures  
Main Booms and Tubing, Rods, and Bushings

**CFRP** Carbon Fiber World Tool Booms

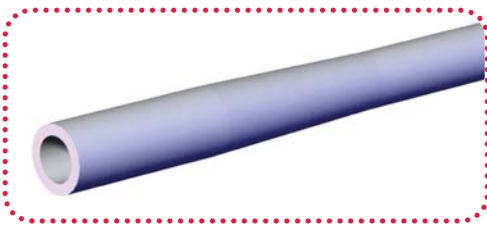


Interpress Main Boom  
CPI-CFRP-T1-1250



End of Line/Destacker  
Main Boom  
CPI-CFRP-T2-1675

**PAT** Tapered Aluminum Round World Tool Booms



(Ø) Diameter: Ø3.00" Tapered to Ø2.50"

Length

55.00" ..... CPI-PAT-30TP-1M-55

60.00" ..... CPI-PAT-30TP-0M-60

**PAT** Thin Wall Aluminum Round Tubing



(Ø) Diameter

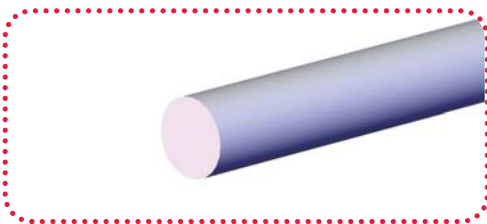
Ø0.50" ..... CPI-PAT-50T-(L)

Ø0.75" ..... CPI-PAT-75T-(L)

Ø1.00" ..... CPI-PAT-100T-(L)

(L) = Specify Length in 12.00" [300mm] Increments  
Imperial Example: 12 = 12.00" (CPI-PAT-50T-12)

**PAB** Solid Aluminum Rods



(Ø) Diameter

Ø1.00" ..... CPI-PAB-10-(L)

Ø25mm ..... CPI-PAB-25-(L)

(L) = Specify Length in 6.00" [150mm] Increments  
Imperial Example: 06 = 6.00" (CPI-PAB10-06)  
Metric Example: 150 = 150mm (CPI-PAB-10-150)

**PCT** Carbon Fiber Round Tubing



(Ø) Diameter

Ø1.50" ..... CPI-PCT-150-(L)

Ø2.50" ..... CPI-PCT-250-(L)

(L) = Specify Length in 6.00" [150mm] Increments  
Imperial Example: 12 = 12.00" (CPI-PCT150-12)

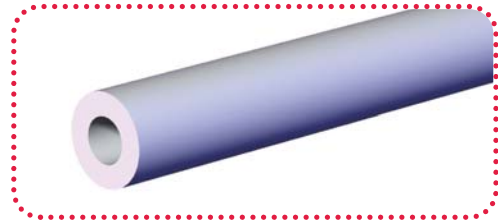
Round End Effector Tooling - Structures  
Aluminum and Steel Round Tubing

PAT Aluminum Round Tubing

(Ø) Diameter

- Ø1.00" ..... CPI-PAT-1025-(L)
- Ø1.25" ..... CPI-PAT-125-(L)
- Ø1.50" ..... CPI-PAT-15-(L)
- Ø40mm ..... CPI-PAT-40-(L)
- Ø2.50" ..... CPI-PAT-25-(L)
- Ø60mm ..... CPI-PAT-60-(L)
- Ø2.50" (0.375" wall) ..... CPI-PAT-2538-(L)

(L) = Specify Length in 6.00" [150mm] Increments  
Imperial Example: 06 = 6.00" (CPI-PAT-1025-06)  
Metric Example: 150 = 150mm (CPI-PAT-60-150)



BTI Aluminum Round Slotted Tubing

(Ø) Diameter

- Ø1.00" ..... CPI-BTI-1025-75-(L)
- Ø2.50" ..... CPI-BTI-25-95-(L)
- Ø40mm ..... CPI-BTI-40-75-(L)
- Ø60mm ..... CPI-BTI-60-95-(L)

(L) = Specify Length in 6.00" [150mm] Increments  
Imperial Example: 06 = 6.00" (CPI-BTI-1025-75-06)  
Metric Example: 150 = 150mm (CPI-BTI-60-95-150)



Steel Round Tubing

(Ø) Diameter

- Ø1.00" ..... CPI-PST-10-(L)
- Ø1.25" ..... CPI-PST-1212-(L)
- Ø1.00" (0.19" Wall) ..... CPI-HYD-TUBE-(L)
- Ø1.00" (0.19" Wall) ..... M1512-(L)

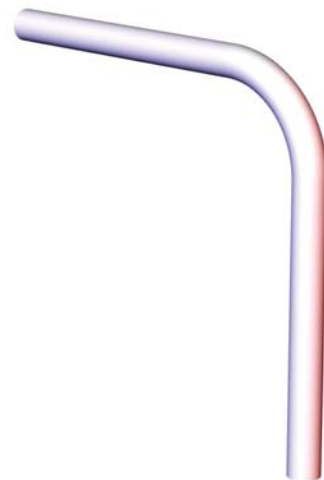
(L) = Specify Length in 12.00" [300mm] Increments  
Imperial Example: 12 = 12.00" (CPI-PST-10-12)



PST Bent Steel Round Tubing

(Ø) Diameter/Angle

- Ø1.00"/90° ..... CPI-PST-10-300-300
- Ø25mm/135° ..... CPI-PST-10-300-300-45
- Ø25mm/90° ..... CPI-PST-10-300-300-90



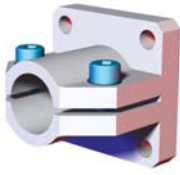
CB Aluminum Bushings

(Ø) Outside/Inside Diameter

- Ø1.50"/Ø1.00" ..... CPI-CB-15-10
- Ø2.00"/Ø1.50" ..... CPI-CB-20-15
- Ø2.50"/Ø2.00" ..... CPI-CB-25-75

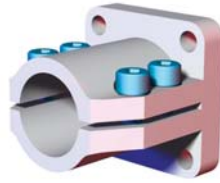


Round End Effector Tooling - Transition Brackets and Blocks  
End Flange, Offet, Swivel and Guide Mounts



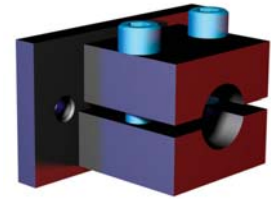
Ø20mm/0.75"  
End Flange Mount

| Model              | Tube (Ø) |
|--------------------|----------|
| CPI-CLM-20M-15F    | 20mm     |
| CPI-CLM-75-15F-ATI | .75"(in) |



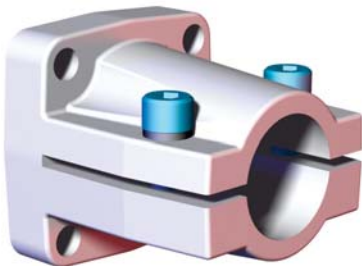
Ø25mm/1.00"  
End Flange Mount

| Model           | Tube (Ø)  |
|-----------------|-----------|
| CPI-CLM-25M-15F | 25mm      |
| CPI-CLM-10-15F  | 1.00"(in) |



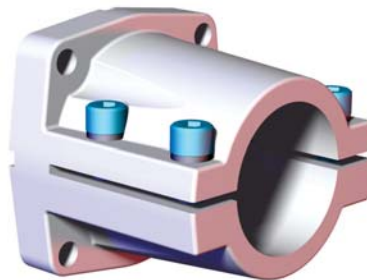
Ø25mm/1.00"  
End Flange Mount

| Model | Tube (Ø)  |
|-------|-----------|
| M1511 | 1.00"(in) |



Ø40mm/1.50"  
End Flange Mount

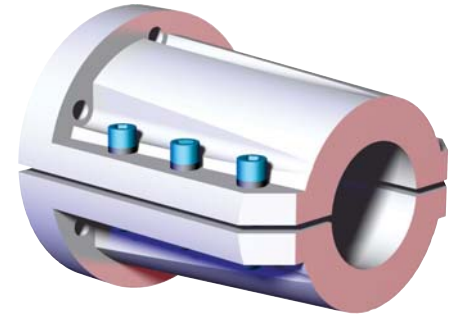
| Model          | Tube (Ø)  |
|----------------|-----------|
| CPI-KL-40-60F  | 40mm      |
| CPI-CL-15-238F | 1.50"(in) |



Ø60mm/2.50"  
End Flange Mount

| Model            | Tube (Ø)  |
|------------------|-----------|
| CPI-KL-60-78F    | 60mm      |
| CPI-CL-25-312BBF | 2.50"(in) |
| CPI-CL-25-312F*  | 2.50"(in) |

\*312BBF without Keyway



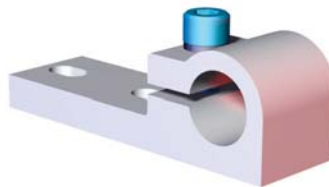
Ø60mm/2.50"/3.00"  
End Flange Mount

| Model           | Tube (Ø)  |
|-----------------|-----------|
| CPI-CL-60-125F  | 60mm      |
| CPI-CL-250-125F | 2.50"(in) |
| CPI-CL-300-125F | 3.00"(in) |



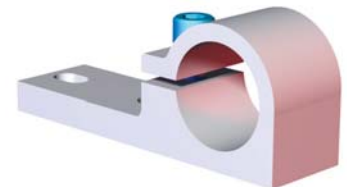
Ø40mm  
Swivel Flange Mount

| Model           | Tube (Ø) |
|-----------------|----------|
| CPI-RJM-78F-40S | 40mm     |



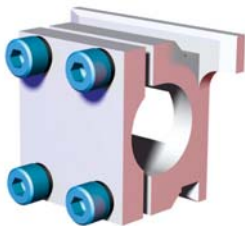
Ø25mm/1.00"  
Offset Flange Mount

| Model         | Tube (Ø)  |
|---------------|-----------|
| CPI-BC-00-25  | 25mm      |
| CPI-BC-00-100 | 1.00"(in) |



Ø40mm/1.50"  
Offset Flange Mount

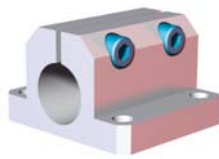
| Model         | Tube (Ø)  |
|---------------|-----------|
| CPI-BC-00-40  | 40mm      |
| CPI-BC-00-150 | 1.50"(in) |



Ø30mm Guide Mount for  
Crossbar Tooling Systems

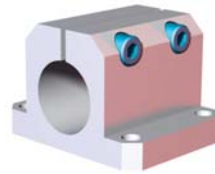
| Model       | Tube (Ø) |
|-------------|----------|
| CPI-SGM-191 | 30mm     |

## Round End Effector Tooling - Transition Brackets and Blocks Mid Flange and Direct Mounts



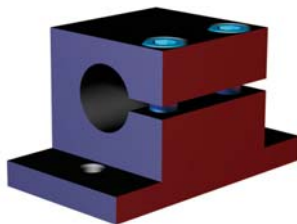
Ø20mm/0.75"  
Mid Flange Mount

| Model                   | Tube (Ø)  |
|-------------------------|-----------|
| CPI-CLM-20M-1517F-90    | 20mm      |
| CPI-CLM-75-1517F-90-ATI | 0.75"(in) |



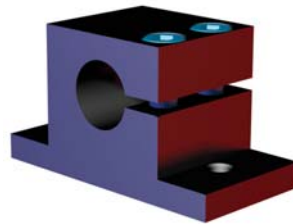
Ø25mm/1.00"  
Mid Flange Mount

| Model               | Tube (Ø)  |
|---------------------|-----------|
| CPI-CLM-25M-152F-90 | 25mm      |
| CPI-CLM-10-152F-90  | 1.00"(in) |



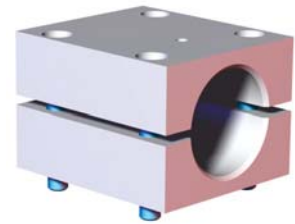
Ø1.00" Inline  
Mid Flange Block

| Model | Tube (Ø)  |
|-------|-----------|
| M1509 | 1.00"(in) |



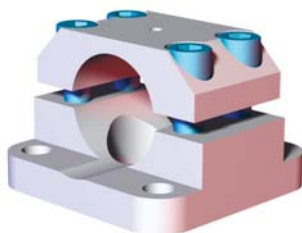
Ø1.00"  
Mid Flange Block

| Model | Tube (Ø)  |
|-------|-----------|
| M1510 | 1.00"(in) |



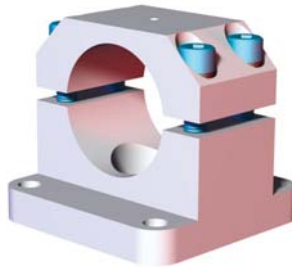
Ø40mm  
Mid Flange Mount

| Model          | Tube (Ø) |
|----------------|----------|
| CPI-TP-40M-100 | 40mm     |



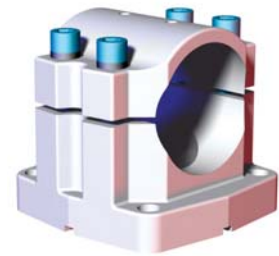
Ø40mm/1.50"  
Mid Flange Mount

| Model             | Tube (Ø)  |
|-------------------|-----------|
| CPI-KL-40-60F-90  | 40mm      |
| CPI-CL-15-238F-90 | 1.50"(in) |



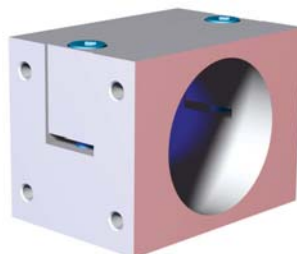
Ø60mm with 78/80mm Mounting  
Mid Flange Mount

| Model            | Mounting |
|------------------|----------|
| CPI-KL-60-78F-90 | 78mm sq. |
| CPI-KL-60-80F-90 | 80mm sq. |



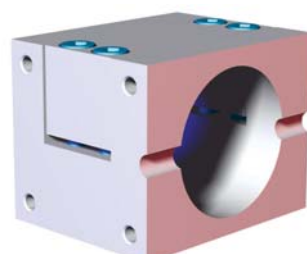
Ø2.50" with 3.125" Mounting  
Mid Flange Mount

| Model             | Mounting   |
|-------------------|------------|
| CPI-CL-25-312F-90 | 3.125" sq. |



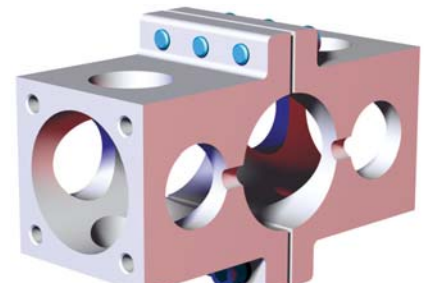
Ø2.50" Direct Mount  
for RDN-10 Housings

| Model            | Tube (Ø)  |
|------------------|-----------|
| CPI-CL-25-DM-10F | 2.50"(in) |



Ø60mm/2.50" Direct Mount  
for RDN-40 Housings

| Model            | Tube (Ø)  |
|------------------|-----------|
| CPI-CL-60-DM-40F | 60mm      |
| CPI-CL-25-DM-15F | 2.50"(in) |



Ø2.50" World Tool Direct Mount  
for RDN-40 Housings

| Model          | Tube (Ø) |
|----------------|----------|
| CPI-TP-40M-100 | 40mm     |



## Round End Effector Tooling - Transition Brackets and Blocks

### Cross Transition Brackets and Blocks

#### CLM (Micro) Cross Transition Brackets



Ø20mm/.75" to Ø12mm/0.50"

| Model           | Tube 1 (Ø) | Tube 2 (Ø) |
|-----------------|------------|------------|
| CPI-CLM-20M-12M | 12mm       | 20mm       |
| CPI-CLM-75-50   | .50"(in)   | 0.75"(in)  |



Ø12mm/0.50" to Ø12mm/0.50"

| Model           | Tube (Ø)  |
|-----------------|-----------|
| CPI-CLM-12M-12M | 12mm      |
| CPI-CLM-50-50   | 0.50"(in) |



Ø25mm/1.00" to Ø12mm/.50"

| Model           | Tube 1 (Ø) | Tube 2 (Ø) |
|-----------------|------------|------------|
| CPI-CLM-25M-12M | 12mm       | 25mm       |
| CPI-CLM-10-50   | .50"(in)   | 1.00"(in)  |



Ø12mm/0.50" to Ø12mm/0.50"

| Model              | Tube (Ø) |
|--------------------|----------|
| CPI-CLM-20M-20M    | 20mm     |
| CPI-CLM-20M-20M-ST | 20mm     |
| CPI-CLM-75-75      | .75"(in) |

Material: Aluminum  
Material: Steel  
Material: Aluminum



Ø25mm/1.00" to Ø20mm/.75"

| Model           | Tube 1 (Ø) | Tube 2 (Ø) |
|-----------------|------------|------------|
| CPI-CLM-25M-20M | 20mm       | 25mm       |
| CPI-CLM-10-75   | .75"(in)   | 1.00"(in)  |



Ø25mm/1.00" to Ø25mm/1.00"

| Model           | Tube (Ø)  |
|-----------------|-----------|
| CPI-CLM-25M-25M | 25mm      |
| CPI-CLM-10-10   | 1.00"(in) |

#### M Series Cross Transition Blocks



Ø1.00" to Ø1.00"

**Model**  
M1513

#### SC (Single Bolt) Cross Transition Blocks



Ø25mm/1.00" to Ø25mm/1.00"  
Single Bolt

| Model           | Tube (Ø)  | Finish |
|-----------------|-----------|--------|
| CPI-SC-25-25    | 25mm      | Silver |
| CPI-SC-25-25-BL | 25mm      | Blue   |
| CPI-SC-10-10    | 1.00"(in) | Silver |



Ø1.00" to Ø0.50"

**Model**  
M1563



Ø25mm to Ø30mm  
Single Bolt

**Model**  
CPI-SC-25-30



Ø25mm to Ø40mm  
Single Bolt

**Model**  
CPI-SC-25-40



Ø40mm to Ø40mm  
Single Bolt

**Model**  
CPI-SC-40-40

Round End Effector Tooling - Transition Brackets and Blocks  
 Cross Transition Brackets and Blocks/Single End Assembly Cross Clamp

M-Block (Double Bolt) Cross Transition Blocks



Ø25mm/1.00" to Ø25mm/1.00"

| Model       | Tube (Ø)  | Finish |
|-------------|-----------|--------|
| M-25M-25M-M | 25mm      | Blue   |
| M-10E-10E-M | 1.00"(in) | Black  |



Ø25mm/1.00" to Ø40mm/1.25"/1.50"

| Model       | Tube 1 (Ø) | Tube 2 (Ø) | Finish |
|-------------|------------|------------|--------|
| M-10E-12E-M | 1.25"(in)  | 1.00"(in)  | Black  |
| M-10E-15E-M | 1.50"(in)  | 1.00"(in)  | Black  |
| M-25M-40M-M | 40mm       | 25mm       | Blue   |



Ø25mm/1.00" to Ø60mm/2.50"

| Model       | Tube 1 (Ø) | Tube 2 (Ø) | Finish |
|-------------|------------|------------|--------|
| M-25M-60M-M | 60mm       | 25mm       | Blue   |
| M-10E-25E-M | 2.50"(in)  | 1.00"(in)  | Black  |



Ø40mm/1.25"/1.50" to Ø40mm/1.25"/1.50"

| Model       | Tube 1 (Ø) | Tube 2 (Ø) | Finish |
|-------------|------------|------------|--------|
| M-12E-12E-M | 1.25"(in)  | 1.25"(in)  | Black  |
| M-12E-15E-M | 1.25"(in)  | 1.50"(in)  | Black  |
| M-15E-15E-M | 1.50"(in)  | 1.50"(in)  | Black  |
| M-40M-40M-M | 40mm       | 40mm       | Blue   |



Ø40mm/1.50" to Ø60mm/2.50"

| Model       | Tube 1 (Ø) | Tube 2 (Ø) | Finish |
|-------------|------------|------------|--------|
| M-40M-60M-M | 60mm       | 40mm       | Blue   |
| M-15E-25E-M | 2.50"(in)  | 1.50"(in)  | Black  |



Ø60mm/2.50" to Ø60mm/2.50"

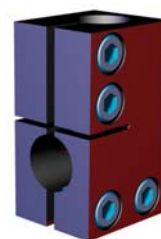
| Model       | Tube (Ø)  | Finish |
|-------------|-----------|--------|
| M-60M-60M-M | 60mm      | Blue   |
| M-25E-25E-M | 2.50"(in) | Black  |



Ø1.00" to Ø1.00"  
 (72mm [2.83]  
 Center to Center)

**Model**  
**M1584**

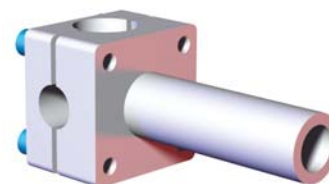
M-Block  
 (Double Bolt) T-Clamp



Ø1.00" to Ø1.00"

**Model**  
**M-1519**

TA15E  
 Single End Extension

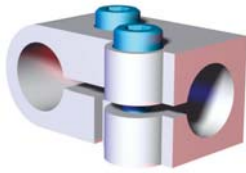


Ø1.50"/1.00" to Ø1.50"  
 Single End Extension  
 Bracket Assembly

**Model**  
**CPI-TA15E-1015-M**

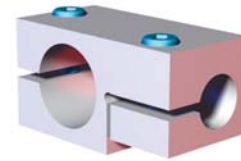
### Round End Effector Tooling - Transition Brackets and Blocks

#### TCA T-Clamps Transition Brackets and Blocks



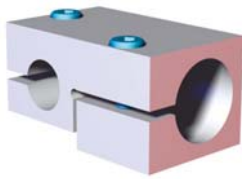
Ø25mm/1.00"

| Model         | Tube (Ø)  |
|---------------|-----------|
| CPI-TCA-25-25 | 25mm      |
| CPI-TCA10-10  | 1.00"(in) |



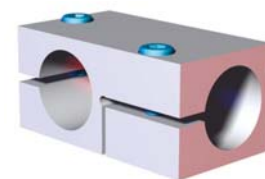
Ø40mm/1.50" to Ø25mm/1.00"

| Model         | Tube 1 (Ø) | Tube 2 (Ø) |
|---------------|------------|------------|
| CPI-TCA-25-40 | 40mm       | 25mm       |
| CPI-TCA-10-15 | 1.50"(in)  | 1.00"(in)  |



Ø25mm/1.00" to Ø40mm/1.50"

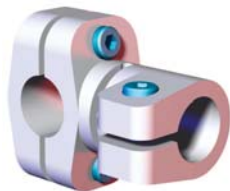
| Model         | Tube 1 (Ø) | Tube 2 (Ø) |
|---------------|------------|------------|
| CPI-TCA-40-25 | 25mm       | 40mm       |
| CPI-TCA-15-10 | 1.00"(in)  | 1.50"(in)  |



Ø40mm/1.50"

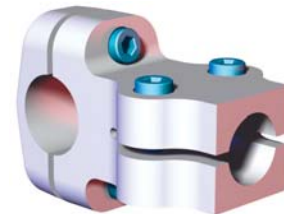
| Model         | Tube (Ø)  |
|---------------|-----------|
| CPI-TCA-40-40 | 40mm      |
| CPI-TCA-15-15 | 1.50"(in) |

#### TCA T-Clamps for Crossbar Tooling



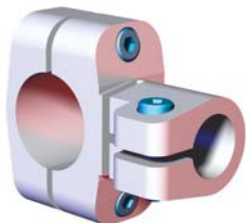
Ø25mm/1.00"

| Model            | Tube (Ø)  |
|------------------|-----------|
| CPI-TCA25-25-SGM | 25mm      |
| CPI-TCA10-10-SGM | 1.00"(in) |



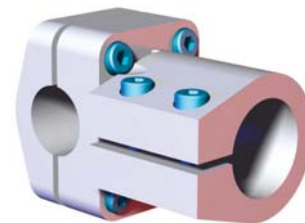
Ø30mm to Ø25mm

| Model           | Tube 1 (Ø) | Tube 2 (Ø) |
|-----------------|------------|------------|
| CPI-TCA25-30-HD | 30mm       | 25mm       |



Ø40mm to Ø25mm

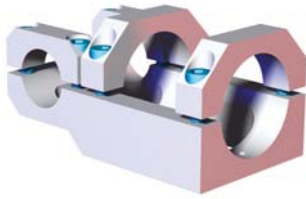
| Model             | Tube 1 (Ø) | Tube 2 (Ø) |
|-------------------|------------|------------|
| CPI-TCA-25-40-SGM | 40mm       | 25mm       |



Ø30mm to Ø40mm

| Model        | Tube 1 (Ø) | Tube 2 (Ø) |
|--------------|------------|------------|
| CPI-TCA40-30 | 30mm       | 40mm       |

Round End Effector Tooling - Transition Brackets and Blocks  
T-Clamps and Parallel Transition Brackets and Blocks



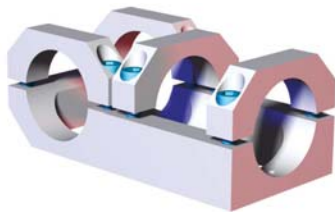
Ø1.50" to Ø2.50"

| Model           | Tube 1 (Ø) | Tube 2 (Ø) |
|-----------------|------------|------------|
| CPI-TCA-250-150 | 1.50"(in)  | 2.50"(in)  |



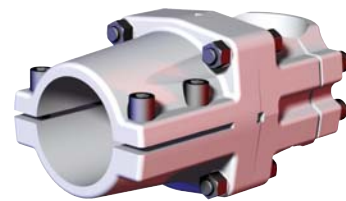
Ø40mm to Ø60mm/2.50"

| Model           | Tube 1 (Ø) | Tube 2 (Ø) |
|-----------------|------------|------------|
| CPI-TCA-60M-40M | 40mm       | 60mm       |
| CPI-TCA-250-40M | 40mm       | 2.50"(in)  |



Ø60mm/2.50" to Ø60mm/2.50"

| Model           | Tube 1 (Ø) |
|-----------------|------------|
| CPI-TCA-60M-60M | 60mm       |
| CPI-TCA-250-250 | 2.50"(in)  |



Ø60mm/2.50" to Ø60mm/2.50"  
90° Adjustable

| Model          | Tube 1 (Ø) |
|----------------|------------|
| CPI-HD-250-BBF | 2.50"(in)  |

Parallel Transition Blocks



Ø1.00" to Ø0.50"

| Model |
|-------|
| M1581 |



Ø40mm to Ø25mm

| Model        |
|--------------|
| CPI-PC-25-40 |



Ø60mm/2.50" to Ø60mm/2.50"

| Model     | Tube 1 (Ø) |
|-----------|------------|
| M-1523-MT | 25mm       |
| M1523     | 1.00"(in)  |



Round End Effector Tooling - Transition Brackets and Blocks

SECM (Micro) Low-Profile Wrist



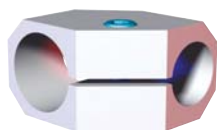
Ø20mm/0.75" to Ø12mm/0.50"

| Model          | Tube 1 (Ø) | Tube 2 (Ø) |
|----------------|------------|------------|
| CPI-SECM-2012M | 12mm       | 20mm       |
| CPI-SECM-7550  | .50"(in)   | .75"(in)   |



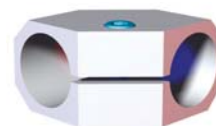
Ø25mm/1.00"

| Model          | Tube (Ø) |
|----------------|----------|
| CPI-SECM-2020M | 20mm     |
| CPI-SECM-7575  | .75"(in) |



Ø25mm/1.00" to Ø20mm/0.75"

| Model          | Tube 1 (Ø) | Tube 2 (Ø) |
|----------------|------------|------------|
| CPI-SECM-2520M | 25mm       | 20mm       |
| CPI-SECM-1075  | 1.00"(in)  | .75"(in)   |



Ø25mm/1.00"

| Model          | Tube (Ø)  |
|----------------|-----------|
| CPI-SECM-2525M | 25mm      |
| CPI-SECM-1010  | 1.00"(in) |

SEC/SLK Low-Profile Wrist



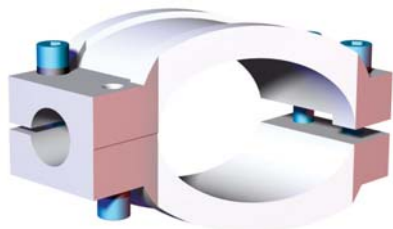
Ø40mm/1.50" to Ø25mm/1.00"

| Model        | Tube 1 (Ø) | Tube 2 (Ø) |
|--------------|------------|------------|
| CPI-SEC-1510 | 1.50"(in)  | 1.00"(in)  |
| CPI-SLK-4025 | 40mm       | 25mm       |



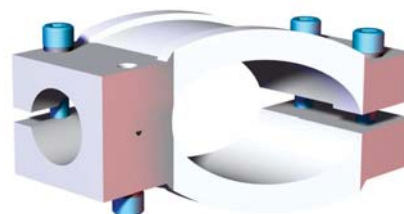
Ø34mm to Ø25mm/34mm

| Model        | Tube 1 (Ø) | Tube 2 (Ø) |
|--------------|------------|------------|
| CPI-SEC-3425 | 25mm       | 34mm       |
| CPI-SEC-3434 | 34mm       | 34mm       |



Ø60mm/2.50" to Ø25mm/1.00"

| Model        | Tube 1 (Ø) | Tube 2 (Ø) |
|--------------|------------|------------|
| CPI-SLK-6025 | 60mm       | 25mm       |
| CPI-SEC-2510 | 2.50"(in)  | 1.00"(in)  |

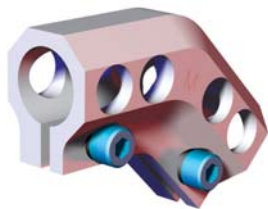


Ø2.50" to Ø1.50"

| Model        | Tube 1 (Ø) | Tube 2 (Ø) |
|--------------|------------|------------|
| CPI-SEC-2515 | 2.50"(in)  | 1.50"(in)  |

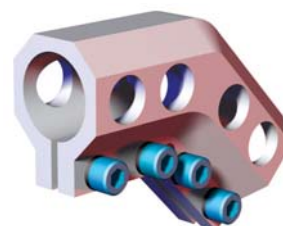
## Round End Effector Tooling - Transition Brackets and Blocks

### DC Elbow and Swivel Transition Brackets



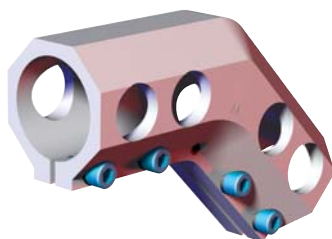
Ø25mm/1.50" 45° Elbow

| Model           | Tube (Ø)  |
|-----------------|-----------|
| CPI-DC-2525M-45 | 25mm      |
| CPI-DC-1010-45  | 1.00"(in) |



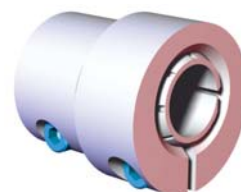
Ø60mm/2.50" 45° Elbow

| Model           | Tube (Ø)  |
|-----------------|-----------|
| CPI-DC-40-40-45 | 40mm      |
| CPI-DC-1515-45  | 1.50"(in) |



Ø60mm/2.50" 45° Elbow

| Model           | Tube (Ø)  |
|-----------------|-----------|
| CPI-DC-6060M-45 | 60mm      |
| CPI-DC-2525-45  | 2.50"(in) |

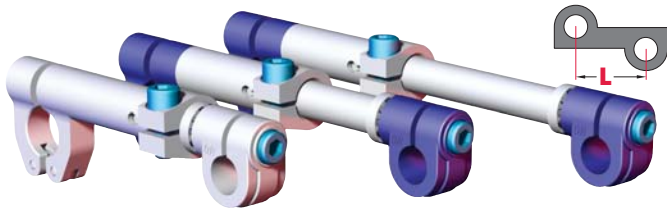


Ø25mm/1.00" Swivel

| Model          | Tube (Ø)  |
|----------------|-----------|
| CPI-DC-2525S-8 | 25mm      |
| CPI-DC-1010S-8 | 1.00"(in) |

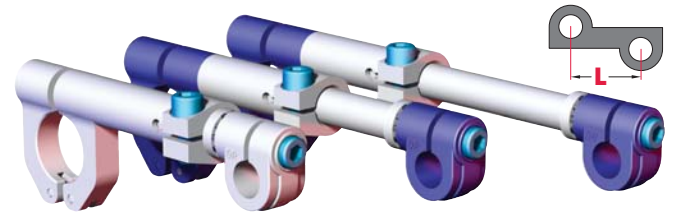
Round End Effector Tooling - Swivel Arms and Accessories

TSA Telescoping Swivel Arms for Apple Core and Swivel Ball Mount Accessories



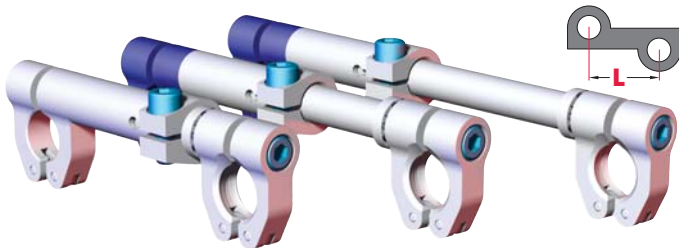
Ø25mm/1.00" for Ø0.75" Apple Core

| Model          | Tube (Ø)  | (L)    | Finish |
|----------------|-----------|--------|--------|
| CPI-55-1-TSA   | 1.00"(in) | [5.66] | SILVER |
| CPI-140-25-TSA | 25mm      | 143.7  | BLUE   |
| CPI-75-1-TSA   | 1.00"(in) | [7.66] | SILVER |
| CPI-190-25-TSA | 25mm      | 194.5  | BLUE   |
| CPI-95-1-TSA   | 1.00"(in) | [9.66] | SILVER |
| CPI-240-25-TSA | 25mm      | 245.3  | BLUE   |



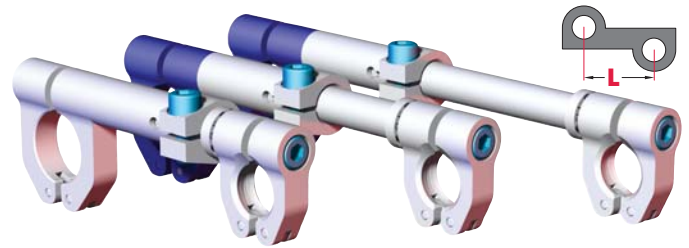
Ø40mm/1.50" for Ø0.75" Apple Core

| Model          | Tube (Ø)  | (L)     | Finish |
|----------------|-----------|---------|--------|
| CPI-55-150-TSA | 1.50"(in) | [5.94]  | SILVER |
| CPI-140-40-TSA | 40mm      | 150.9   | BLUE   |
| CPI-75-150-TSA | 1.50"(in) | [7.94]  | SILVER |
| CPI-190-40-TSA | 40mm      | 201.7   | BLUE   |
| CPI-95-150-TSA | 1.50"(in) | [12.00] | SILVER |
| CPI-240-40-TSA | 40mm      | 304.8   | BLUE   |



Ø25mm/1.00" for Ø1.125" Swivel Ball Mount

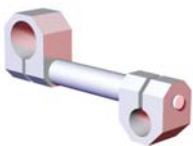
| Model               | Tube (Ø)  | (L)    | Finish |
|---------------------|-----------|--------|--------|
| CPI-55-1-TSA-B112   | 1.00"(in) | [5.65] | SILVER |
| CPI-140-25-TSA-B112 | 25mm      | 143.6  | BLUE   |
| CPI-75-1-TSA-B112   | 1.00"(in) | [7.65] | SILVER |
| CPI-190-25-TSA-B112 | 25mm      | 194.4  | BLUE   |
| CPI-95-1-TSA-B112   | 1.00"(in) | [9.65] | SILVER |
| CPI-240-25-TSA-B112 | 25mm      | 245.2  | BLUE   |



Ø40mm/1.50" for Ø1.125" Swivel Ball Mount

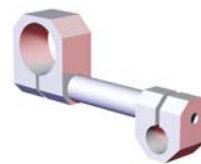
| Model               | Tube (Ø)  | (L)    | Finish |
|---------------------|-----------|--------|--------|
| CPI-55-150-TSA-B112 | 1.50"(in) | [5.93] | SILVER |
| CPI-140-40-TSA-B112 | 40mm      | 150.7  | BLUE   |
| CPI-75-150-TSA-B112 | 1.50"(in) | [7.93] | SILVER |
| CPI-190-40-TSA-B112 | 40mm      | 201.5  | BLUE   |
| CPI-95-150-TSA-B112 | 1.50"(in) | [9.93] | SILVER |
| CPI-240-40-TSA-B112 | 40mm      | 252.3  | BLUE   |

MSA (Micro) Swivel Arms for Ø0.50" Apple Core Accessories



Ø20mm/0.75" for Ø.50 Apple Core

| Model             | Tube (Ø) | (L)    |
|-------------------|----------|--------|
| CPI-200-7550-MSA  | .75"(in) | [2.00] |
| CPI-200-20M50-MSA | 20mm     | 50.8   |
| CPI-300-7550-MSA  | .75"(in) | [3.00] |
| CPI-300-20M50-MSA | 20mm     | 76.2   |
| CPI-400-7550-MSA  | .75"(in) | [4.00] |
| CPI-400-20M50-MSA | 20mm     | 101.7  |
| CPI-500-7550-MSA  | .75"(in) | [5.00] |
| CPI-500-20M50-MSA | 20mm     | 127.1  |
| CPI-600-7550-MSA  | .75"(in) | [6.00] |
| CPI-600-20M50-MSA | 20mm     | 152.5  |

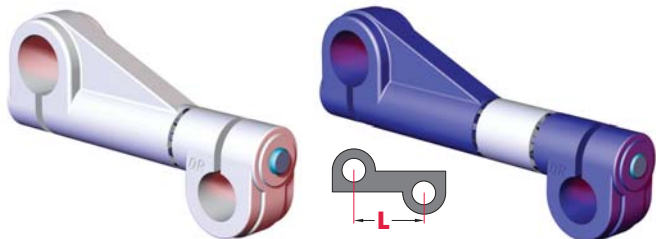


Ø25mm/1.00" for Ø.50 Apple Core

| Model             | Tube (Ø)  | (L)    |
|-------------------|-----------|--------|
| CPI-200-1050-MSA  | 1.00"(in) | [2.00] |
| CPI-200-25M50-MSA | 25mm      | 50.7   |
| CPI-300-1050-MSA  | 1.00"(in) | [3.00] |
| CPI-300-25M50-MSA | 25mm      | 76.1   |
| CPI-400-1050-MSA  | 1.00"(in) | [4.00] |
| CPI-400-25M50-MSA | 25mm      | 101.6  |
| CPI-500-1050-MSA  | 1.00"(in) | [5.00] |
| CPI-500-25M50-MSA | 25mm      | 127.0  |
| CPI-600-1050-MSA  | 1.00"(in) | [6.00] |
| CPI-600-25M50-MSA | 25mm      | 152.4  |

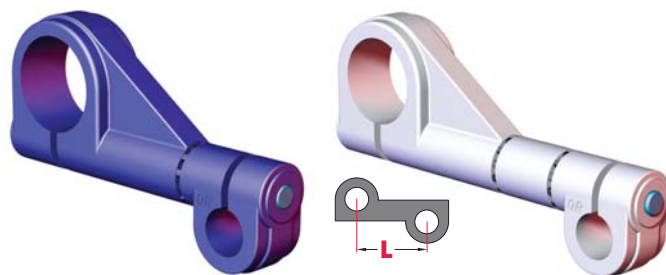
## Round End Effector Tooling - Swivel Arms and Accessories

SA Standard Swivel Arms for Apple Core and Swivel Ball Mount Accessories



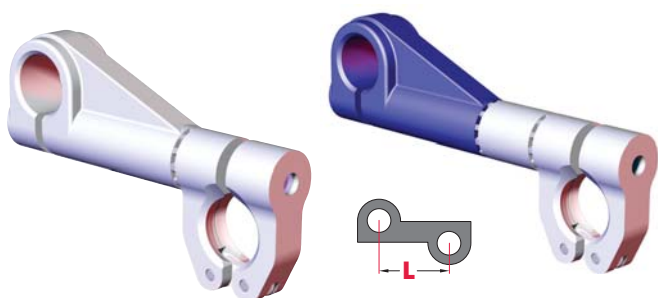
Ø25mm/1.00" for Ø0.75" Apple Core

| Model         | Tube (Ø)  | (L)    | Finish |
|---------------|-----------|--------|--------|
| CPI-400-1-SA  | 1.00"(in) | [3.90] | SILVER |
| CPI-100-25-SA | 25mm      | 99.1   | BLUE   |
| CPI-500-1-SA  | 1.00"(in) | [5.12] | SILVER |
| CPI-140-25-SA | 25mm      | 130.1  | BLUE   |
| CPI-600-1-SA  | 1.00"(in) | [5.90] | SILVER |
| CPI-160-25-SA | 25mm      | 149.9  | BLUE   |
| CPI-700-1-SA  | 1.00"(in) | [6.67] | SILVER |
| CPI-180-25-SA | 25mm      | 169.4  | BLUE   |
| CPI-800-1-SA  | 1.00"(in) | [8.25] | SILVER |
| CPI-200-25-SA | 25mm      | 209.6  | BLUE   |



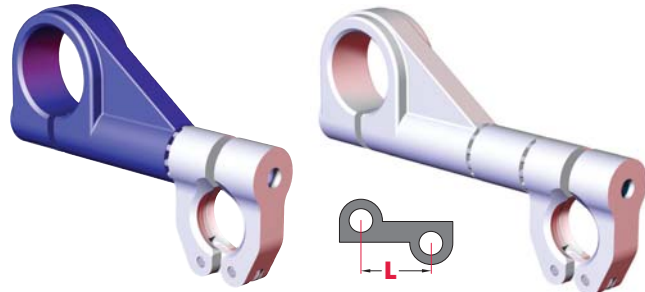
Ø40mm/1.50" for Ø0.75" Apple Core

| Model         | Tube (Ø)  | (L)    | Finish |
|---------------|-----------|--------|--------|
| CPI-400-15-SA | 1.50"(in) | [3.75] | SILVER |
| CPI-100-40-SA | 40mm      | 95.2   | BLUE   |
| CPI-500-15-SA | 1.50"(in) | [4.97] | SILVER |
| CPI-140-40-SA | 40mm      | 126.1  | BLUE   |
| CPI-600-15-SA | 1.50"(in) | [5.75] | SILVER |
| CPI-160-40-SA | 40mm      | 146.0  | BLUE   |
| CPI-700-15-SA | 1.50"(in) | [6.52] | SILVER |
| CPI-180-40-SA | 40mm      | 165.5  | BLUE   |
| CPI-800-15-SA | 1.50"(in) | [8.10] | SILVER |
| CPI-200-40-SA | 40mm      | 205.6  | BLUE   |



Ø25mm/1.00" for Ø1.125" Swivel Ball Mount

| Model              | Tube (Ø)  | (L)    | Finish |
|--------------------|-----------|--------|--------|
| CPI-400-1-SA-B112  | 1.00"(in) | [3.90] | SILVER |
| CPI-100-25-SA-B112 | 25mm      | 98.9   | BLUE   |
| CPI-500-1-SA-B112  | 1.00"(in) | [5.12] | SILVER |
| CPI-140-25-SA-B112 | 25mm      | 129.9  | BLUE   |
| CPI-600-1-SA-B112  | 1.00"(in) | [5.90] | SILVER |
| CPI-160-25-SA-B112 | 25mm      | 149.7  | BLUE   |
| CPI-700-1-SA-B112  | 1.00"(in) | [6.67] | SILVER |
| CPI-180-25-SA-B112 | 25mm      | 169.3  | BLUE   |
| CPI-800-1-SA-B112  | 1.00"(in) | [8.25] | SILVER |
| CPI-200-25-SA-B112 | 25mm      | 209.4  | BLUE   |



Ø40mm/1.50" for Ø1.125" Swivel Ball Mount

| Model              | Tube (Ø)  | (L)    | Finish |
|--------------------|-----------|--------|--------|
| CPI-400-15-SA-B112 | 1.50"(in) | [3.74] | SILVER |
| CPI-100-40-SA-B112 | 40mm      | 95.0   | BLUE   |
| CPI-500-15-SA-B112 | 1.50"(in) | [4.96] | SILVER |
| CPI-140-40-SA-B112 | 40mm      | 126.0  | BLUE   |
| CPI-600-15-SA-B112 | 1.50"(in) | [5.74] | SILVER |
| CPI-160-40-SA-B112 | 40mm      | 145.8  | BLUE   |
| CPI-700-15-SA-B112 | 1.50"(in) | [6.51] | SILVER |
| CPI-180-40-SA-B112 | 40mm      | 165.4  | BLUE   |
| CPI-800-15-SA-B112 | 1.50"(in) | [8.09] | SILVER |
| CPI-200-40-SA-B112 | 40mm      | 205.5  | BLUE   |

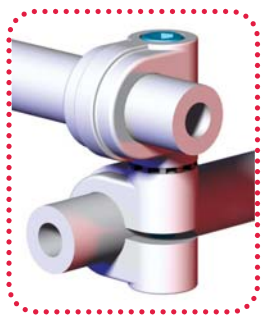
Round End Effector Tooling - Swivel Arms and Accessories

Ø25mm/1.00" Transition Swivel Arms for Ø19mm/0.75" Apple Core Accessories



Ø25mm/1.00" for Ø0.75" Apple Core (Single-Bolt)

| Model               | Tube (Ø)  | (L)    | Finish |
|---------------------|-----------|--------|--------|
| CPI-SA10-100-075-02 | 1.00"(in) | [1.96] | SILVER |
| CPI-SA25-25-19-50   | 25mm      | 49.8   | BLUE   |
| CPI-SA10-100-075-03 | 1.00"(in) | [3.02] | SILVER |
| CPI-SA25-25-19-75   | 25mm      | 76.8   | BLUE   |



Transition Swivel Arms can be used in the same fashion as a Standard Swivel Arm or as a transition junction from tube to Single End Extensions or tube

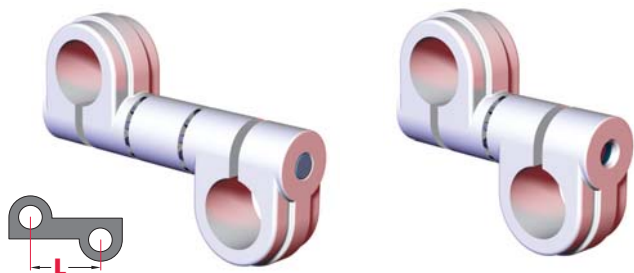
Double-Bolt Transition Swivel Arms allow individual adjustment at each end of the swivel arm for more flexibility.

Ø25mm/1.00" for Ø0.75" Apple Core (Double-Bolt)

| Model               | Tube (Ø)  | (L)              | Finish |
|---------------------|-----------|------------------|--------|
| CPI-ED10-100-075-04 | 1.00"(in) | [4.05]<br>102.9  | SILVER |
| CPI-ED25-25-19-100  | 25mm      | [4.00]<br>101.6  | BLUE   |
| CPI-ED10-100-075-05 | 1.00"(in) | [5.05]<br>128.3  | SILVER |
| CPI-ED10-100-075-06 | 1.00"(in) | [6.05]<br>153.7  | SILVER |
| CPI-ED25-25-19-150  | 25mm      | [5.98]<br>151.9  | BLUE   |
| CPI-ED10-100-075-07 | 1.00"(in) | [7.05]<br>179.1  | SILVER |
| CPI-ED10-100-075-08 | 1.00"(in) | [8.05]<br>204.5  | SILVER |
| CPI-ED25-25-19-200  | 25mm      | [7.95]<br>201.9  | BLUE   |
| CPI-ED10-100-075-09 | 1.00"(in) | [9.05]<br>229.9  | SILVER |
| CPI-ED10-100-075-10 | 1.00"(in) | [10.05]<br>255.3 | SILVER |
| CPI-ED25-25-19-250  | 25mm      | [9.92]<br>252.0  | BLUE   |
| CPI-ED10-100-075-11 | 1.00"(in) | [11.05]<br>280.7 | SILVER |
| CPI-ED10-100-075-12 | 1.00"(in) | [12.05]<br>306.1 | SILVER |
| CPI-ED25-25-19-300  | 25mm      | [11.89]<br>302.0 | BLUE   |
| CPI-ED10-100-075-13 | 1.00"(in) | [13.05]<br>331.5 | SILVER |
| CPI-ED10-100-075-14 | 1.00"(in) | [14.05]<br>356.9 | SILVER |
| CPI-ED25-25-19-350  | 25mm      | [13.85]<br>351.8 | BLUE   |
| CPI-ED10-100-075-15 | 1.00"(in) | [15.05]<br>382.3 | SILVER |
| CPI-ED10-100-075-16 | 1.00"(in) | [16.05]<br>407.7 | SILVER |
| CPI-ED25-25-19-400  | 25mm      | [15.82]<br>401.8 | BLUE   |



Round End Effector Tooling - Swivel Arms and Accessories  
 Ø25mm/1.00" to Ø25mm/1.00" Transition Swivel Arms



Ø25mm/1.00" to Ø25mm/1.00" (Single-Bolt)

| Model               | Tube (Ø)  | (L)    | Finish |
|---------------------|-----------|--------|--------|
| CPI-SA10-100-100-02 | 1.00"(in) | [2.00] | SILVER |
| CPI-SA25-25-25-50   | 25mm      | 50.9   | BLUE   |
| CPI-SA10-100-100-03 | 1.00"(in) | [3.07] | SILVER |
| CPI-SA25-25-25-75   | 25mm      | 77.9   | BLUE   |
| CPI-SA10-100-100-04 | 1.00"(in) | [4.04] | SILVER |
| CPI-SA25-25-25-100  | 25mm      | 102.7  | BLUE   |
| CPI-SA10-100-100-05 | 1.00"(in) | [5.03] | SILVER |
| CPI-SA25-25-25-125  | 25mm      | 127.9  | BLUE   |
| CPI-SA10-100-100-06 | 1.00"(in) | [6.02] | SILVER |
| CPI-SA25-25-25-150  | 25mm      | 153.0  | BLUE   |
| CPI-SA10-100-100-07 | 1.00"(in) | [7.00] | SILVER |
| CPI-SA25-25-25-175  | 25mm      | 177.9  | BLUE   |
| CPI-SA10-100-100-08 | 1.00"(in) | [7.99] | SILVER |
| CPI-SA25-25-25-200  | 25mm      | 203.0  | BLUE   |

Ø25mm/1.00" to Ø25mm/1.00" (Double-Bolt)

| Model               | Tube (Ø)  | (L)              | Finish |
|---------------------|-----------|------------------|--------|
| CPI-ED10-100-100-04 | 1.00"(in) | [4.09]<br>104.0  | SILVER |
| CPI-ED25-25-25-100  | 25mm      | [4.04]<br>102.7  | BLUE   |
| CPI-ED10-100-100-05 | 1.00"(in) | [5.09]<br>129.4  | SILVER |
| CPI-ED10-100-100-06 | 1.00"(in) | [6.09]<br>154.8  | SILVER |
| CPI-ED25-25-25-150  | 25mm      | [6.02]<br>153.0  | BLUE   |
| CPI-ED10-100-100-07 | 1.00"(in) | [7.09]<br>180.2  | SILVER |
| CPI-ED10-100-100-08 | 1.00"(in) | [8.09]<br>205.6  | SILVER |
| CPI-ED25-25-25-200  | 25mm      | [7.99]<br>203.0  | BLUE   |
| CPI-ED10-100-100-09 | 1.00"(in) | [9.09]<br>231.0  | SILVER |
| CPI-ED10-100-100-10 | 1.00"(in) | [10.09]<br>256.4 | SILVER |
| CPI-ED25-25-25-250  | 25mm      | [9.96]<br>253.1  | BLUE   |
| CPI-ED10-100-100-11 | 1.00"(in) | [11.09]<br>281.8 | SILVER |
| CPI-ED10-100-100-12 | 1.00"(in) | [12.09]<br>307.2 | SILVER |
| CPI-ED25-25-25-300  | 25mm      | [11.93]<br>303.1 | BLUE   |
| CPI-ED10-100-100-13 | 1.00"(in) | [13.09]<br>332.6 | SILVER |
| CPI-ED10-100-100-14 | 1.00"(in) | [14.09]<br>358.0 | SILVER |
| CPI-ED25-25-25-350  | 25mm      | [13.89]<br>352.9 | BLUE   |
| CPI-ED10-100-100-15 | 1.00"(in) | [15.09]<br>383.4 | SILVER |
| CPI-ED10-100-100-16 | 1.00"(in) | [16.09]<br>408.8 | SILVER |
| CPI-ED25-25-25-400  | 25mm      | [15.86]<br>402.9 | BLUE   |

Round End Effector Tooling - Swivel Arms and Accessories

Ø40mm/1.50" Transition Swivel Arms for Ø19mm/0.75" Apple Core Accessories



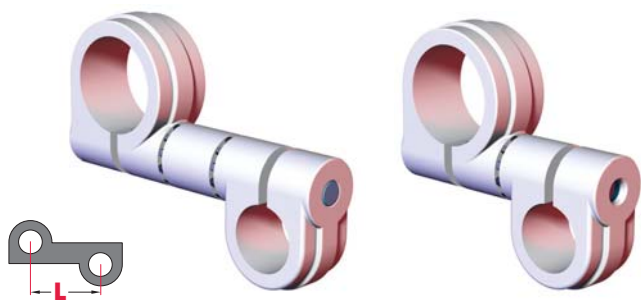
Ø40mm/1.50" for Ø0.75" Apple Core (Single-Bolt)

| Model               | Tube (Ø)  | (L)     | Finish |
|---------------------|-----------|---------|--------|
| CPI-SA10-150-075-02 | 1.50"(in) | [[1.96] | SILVER |
| CPI-SA25-40-19-50   | 40mm      | 49.8    | BLUE   |
| CPI-SA10-150-075-03 | 1.50"(in) | [3.03]  | SILVER |
| CPI-SA25-40-19-75   | 40mm      | 76.9    | BLUE   |

Ø40mm/1.50" for Ø0.75" Apple Core (Double-Bolt)

| Model               | Tube (Ø)  | (L)              | Finish |
|---------------------|-----------|------------------|--------|
| CPI-ED10-150-075-04 | 1.50"(in) | [4.05]<br>102.9  | SILVER |
| CPI-ED25-40-19-100  | 40mm      | [4.00]<br>101.7  | BLUE   |
| CPI-ED10-150-075-05 | 1.50"(in) | [5.05]<br>128.3  | SILVER |
| CPI-ED10-150-075-06 | 1.50"(in) | [6.05]<br>153.7  | SILVER |
| CPI-ED25-40-19-150  | 40mm      | [5.98]<br>152.0  | BLUE   |
| CPI-ED10-150-075-07 | 1.50"(in) | [7.05]<br>179.1  | SILVER |
| CPI-ED10-150-075-08 | 1.50"(in) | [8.05]<br>204.5  | SILVER |
| CPI-ED25-40-19-200  | 40mm      | [7.95]<br>202.0  | BLUE   |
| CPI-ED10-150-075-09 | 1.50"(in) | [9.05]<br>229.9  | SILVER |
| CPI-ED10-150-075-10 | 1.50"(in) | [10.05]<br>255.3 | SILVER |
| CPI-ED25-40-19-250  | 40mm      | [9.92]<br>252.0  | BLUE   |
| CPI-ED10-150-075-11 | 1.50"(in) | [11.05]<br>280.7 | SILVER |
| CPI-ED10-150-075-12 | 1.50"(in) | [12.05]<br>306.1 | SILVER |
| CPI-ED25-40-19-300  | 40mm      | [11.89]<br>302.1 | BLUE   |
| CPI-ED10-150-075-13 | 1.50"(in) | [13.05]<br>331.5 | SILVER |
| CPI-ED10-150-075-14 | 1.50"(in) | [14.05]<br>356.9 | SILVER |
| CPI-ED25-40-19-350  | 40mm      | [13.85]<br>351.9 | BLUE   |
| CPI-ED10-150-075-15 | 1.50"(in) | [15.05]<br>382.3 | SILVER |
| CPI-ED10-150-075-16 | 1.50"(in) | [16.05]<br>407.7 | SILVER |
| CPI-ED25-40-19-400  | 40mm      | [15.82]<br>401.9 | BLUE   |

Round End Effector Tooling - Swivel Arms and Accessories  
 Ø40mm/1.50" to Ø25mm/1.00" Transition Swivel Arms



Ø40mm/1.50" to Ø25mm/1.00" (Single-Bolt)

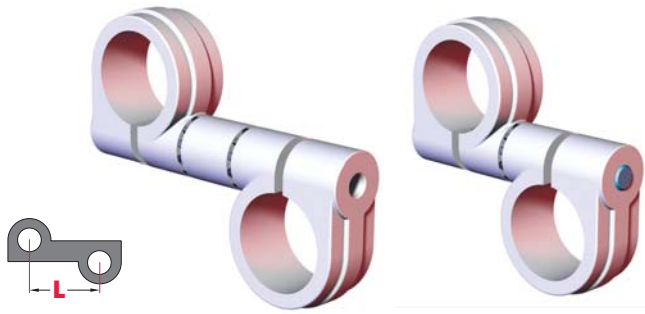
| Model               | Tube (Ø)  | (L)    | Finish |
|---------------------|-----------|--------|--------|
| CPI-SA10-150-100-02 | 1.50"(in) | [2.01] | SILVER |
| CPI-SA25-40-25-50   | 40mm      | 51.0   | BLUE   |
| CPI-SA10-150-100-03 | 1.50"(in) | [3.07] | SILVER |
| CPI-SA25-40-25-75   | 40mm      | 78.0   | BLUE   |
| CPI-SA10-150-100-04 | 1.50"(in) | [4.05] | SILVER |
| CPI-SA25-40-25-100  | 40mm      | 102.8  | BLUE   |
| CPI-SA10-150-100-05 | 1.50"(in) | [5.04] | SILVER |
| CPI-SA25-40-25-125  | 40mm      | 127.9  | BLUE   |
| CPI-SA10-150-100-06 | 1.50"(in) | [6.03] | SILVER |
| CPI-SA25-40-25-150  | 40mm      | 153.1  | BLUE   |
| CPI-SA10-150-100-07 | 1.50"(in) | [7.01] | SILVER |
| CPI-SA25-40-25-175  | 40mm      | 178.0  | BLUE   |
| CPI-SA10-150-100-08 | 1.50"(in) | [8.00] | SILVER |
| CPI-SA25-40-25-200  | 40mm      | 203.1  | BLUE   |

Ø40mm/1.50" to Ø25mm/1.00" (Double-Bolt)

| Model               | Tube (Ø)  | (L)              | Finish |
|---------------------|-----------|------------------|--------|
| CPI-ED10-150-100-04 | 1.50"(in) | [4.10]<br>104.1  | SILVER |
| CPI-ED25-40-25-100  | 40mm      | [4.05]<br>102.8  | BLUE   |
| CPI-ED10-150-100-05 | 1.50"(in) | [5.10]<br>129.5  | SILVER |
| CPI-ED10-150-100-06 | 1.50"(in) | [6.10]<br>154.9  | SILVER |
| CPI-ED25-40-25-150  | 40mm      | [6.03]<br>153.1  | BLUE   |
| CPI-ED10-150-100-07 | 1.50"(in) | [7.10]<br>180.3  | SILVER |
| CPI-ED10-150-100-08 | 1.50"(in) | [8.10]<br>205.7  | SILVER |
| CPI-ED25-40-25-200  | 40mm      | [8.00]<br>203.1  | BLUE   |
| CPI-ED10-150-100-09 | 1.50"(in) | [9.10]<br>231.1  | SILVER |
| CPI-ED10-150-100-10 | 1.50"(in) | [10.10]<br>256.5 | SILVER |
| CPI-ED25-40-25-250  | 40mm      | [9.97]<br>253.2  | BLUE   |
| CPI-ED10-150-100-11 | 1.50"(in) | [11.10]<br>281.9 | SILVER |
| CPI-ED10-150-100-12 | 1.50"(in) | [12.10]<br>307.3 | SILVER |
| CPI-ED25-40-25-300  | 40mm      | [11.94]<br>303.2 | BLUE   |
| CPI-ED10-150-100-13 | 1.50"(in) | [13.10]<br>332.7 | SILVER |
| CPI-ED10-150-100-14 | 1.50"(in) | [14.10]<br>358.1 | SILVER |
| CPI-ED25-40-25-350  | 40mm      | [13.90]<br>353.0 | BLUE   |
| CPI-ED10-150-100-15 | 1.50"(in) | [15.10]<br>383.5 | SILVER |
| CPI-ED10-150-100-16 | 1.50"(in) | [16.10]<br>408.9 | SILVER |
| CPI-ED25-40-25-400  | 40mm      | [15.87]<br>403.0 | BLUE   |

Round End Effector Tooling - Swivel Arms and Accessories

Ø40mm/1.50" to Ø40mm/1.50" Transition Swivel Arms



Ø40mm/1.50" to Ø40mm/1.50" (Single-Bolt)

| Model               | Tube (Ø)  | (L)             | Finish |
|---------------------|-----------|-----------------|--------|
| CPI-SA10-150-150-02 | 1.50"(in) | [2.01]<br>51.1  | SILVER |
| CPI-SA25-40-40-50   | 40mm      |                 | BLUE   |
| CPI-SA10-150-150-03 | 1.50"(in) | [3.07]<br>78.1  | SILVER |
| CPI-SA25-40-40-75   | 40mm      |                 | BLUE   |
| CPI-SA10-150-150-04 | 1.50"(in) | [4.05]<br>102.9 | SILVER |
| CPI-SA25-40-40-100  | 40mm      |                 | BLUE   |
| CPI-SA10-150-150-05 | 1.50"(in) | [5.04]<br>128.0 | SILVER |
| CPI-SA25-40-40-125  | 40mm      |                 | BLUE   |
| CPI-SA10-150-150-06 | 1.50"(in) | [6.03]<br>153.2 | SILVER |
| CPI-SA25-40-40-150  | 40mm      |                 | BLUE   |
| CPI-SA10-150-150-07 | 1.50"(in) | [7.01]<br>178.1 | SILVER |
| CPI-SA25-40-40-175  | 40mm      |                 | BLUE   |
| CPI-SA10-150-150-08 | 1.50"(in) | [8.00]<br>203.2 | SILVER |
| CPI-SA25-40-40-200  | 40mm      |                 | BLUE   |

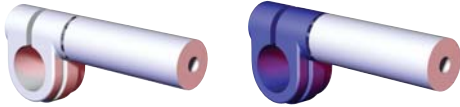
Ø40mm/1.50" to Ø40mm/1.50" (Double-Bolt)

| Model               | Tube (Ø)  | (L)              | Finish |
|---------------------|-----------|------------------|--------|
| CPI-ED10-150-150-04 | 1.50"(in) | [4.10]<br>104.1  | SILVER |
| CPI-ED25-40-40-100  | 40mm      | [4.05]<br>102.9  | BLUE   |
| CPI-ED10-150-150-06 | 1.50"(in) | [6.10]<br>154.9  | SILVER |
| CPI-ED25-40-40-150  | 40mm      | [6.03]<br>153.2  | BLUE   |
| CPI-ED10-150-150-08 | 1.50"(in) | [8.10]<br>205.7  | SILVER |
| CPI-ED25-40-40-200  | 40mm      | [8.00]<br>203.2  | BLUE   |
| CPI-ED10-150-150-10 | 1.50"(in) | [10.10]<br>256.4 | SILVER |
| CPI-ED25-40-40-250  | 40mm      | [9.97]<br>253.2  | BLUE   |
| CPI-ED10-150-150-12 | 1.50"(in) | [12.10]<br>307.3 | SILVER |
| CPI-ED25-40-40-300  | 40mm      | [11.94]<br>303.3 | BLUE   |
| CPI-ED10-150-150-14 | 1.50"(in) | [14.10]<br>358.1 | SILVER |
| CPI-ED25-40-40-350  | 40mm      | [13.90]<br>353.1 | BLUE   |
| CPI-ED10-150-150-16 | 1.50"(in) | [16.10]<br>408.9 | SILVER |
| CPI-ED25-40-40-400  | 40mm      | [15.87]<br>403.1 | BLUE   |



Round End Effector Tooling - Swivel Arms and Accessories  
**ES** and **MSE** Single End Extensions

**ES** Rod End Extensions



Ø25mm/1.00" Tube to Ø25mm/1.00" Rod

| Model            | Tube (Ø)  | Rod (Ø)   | Finish |
|------------------|-----------|-----------|--------|
| CPI-ES10-100-(L) | 1.00"(in) | 1.00"(in) | SILVER |
| CPI-ES25-25-(L)  | 25mm      | 25mm      | BLUE   |

(L) = Specify Length

Length Availability

Imperial Lengths:

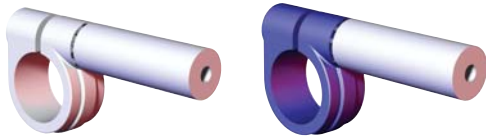
From **03**(3.00") to **19**(19.00") in 1.00" Increments

Order Example: CPI-ES10-100-06 (6.00" Length)

Metric Lengths:

From **50**(50mm) to **400**(400mm) in 50mm Increments

Order Example: CPI-ES25-25-250 (250mm Length)



Ø40mm/1.50" Tube to Ø25mm/1.00" Rod

| Model            | Tube (Ø)  | Rod (Ø)   | Finish |
|------------------|-----------|-----------|--------|
| CPI-ES10-150-(L) | 1.50"(in) | 1.00"(in) | SILVER |
| CPI-ES25-40-(L)  | 40mm      | 25mm      | BLUE   |

(L) = Specify Length

Length Availability

Imperial Lengths:

From **03**(3.00") to **16**(16.00") in 1.00" Increments

Order Example: CPI-ES10-150-06 (6.00" Length)

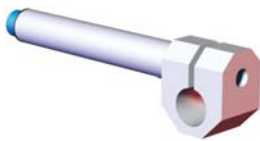
Metric Lengths:

From **50**(50mm) to **400**(400mm) in 50mm Increments

Order Example: CPI-ES25-40-250 (250mm Length)

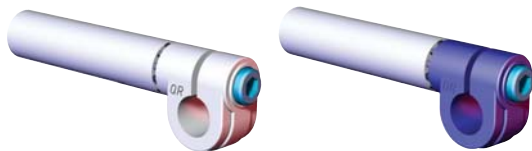
**MSE** (Micro) Mounting End Extensions

Ø0.50" Rod for Ø0.50" Apple Core



| Model            | Rod (Ø) | (L)             |
|------------------|---------|-----------------|
| CPI-MSE-50-50-03 | [.50]   | [3.48]<br>88.3  |
| CPI-MSE-50-50-06 | 12.7    | [6.23]<br>158.2 |

**ES** Mounting End Extensions



Ø25mm/1.00" for Ø0.75" Apple Core

| Model            | Rod (Ø)   | Finish |
|------------------|-----------|--------|
| CPI-ES10-075-(L) | 1.00"(in) | SILVER |
| CPI-ES25-19-(L)  | 25mm      | BLUE   |

(L) = Specify Length

Length Availability

Imperial Lengths:

From **03**(3.00") to **28**(28.00") in 1.00" Increments

Order Example: CPI-ES10-075-06 (6.00" Length)

Metric Lengths:

From **50**(50mm) to **400**(400mm) in 50mm Increments

Order Example: CPI-ES25-19-250 (250mm Length)



Ø25mm/1.00" for Ø1.125" Swivel Ball Mount

| Model             | Rod (Ø)   | Finish |
|-------------------|-----------|--------|
| CPI-ES10-B112-(L) | 1.00"(in) | SILVER |
| CPI-ES25-B112-(L) | 25mm      | BLUE   |

(L) = Specify Length

Length Availability

Imperial Lengths:

From **03**(3.00") to **18**(18.00") in 1.00" Increments

Order Example: CPI-ES10-150-06 (6.00" Length)

Metric Lengths:

From **50**(50mm) to **400**(400mm) in 50mm Increments

Order Example: CPI-ES25-40-250 (250mm Length)