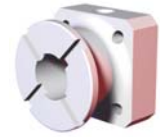
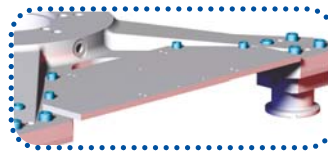
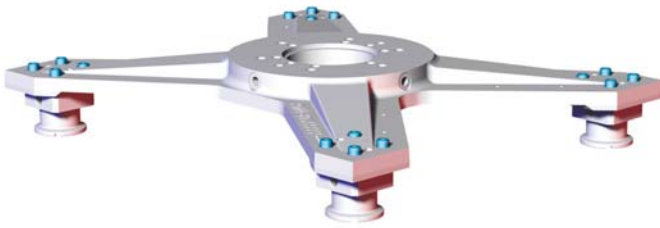
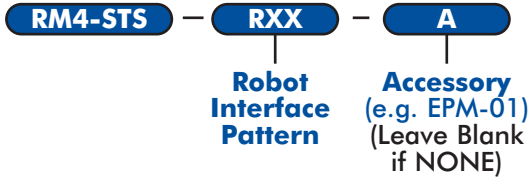


SpiderGrip Precision Tooling System Heavy Duty Mid Mount Assembly



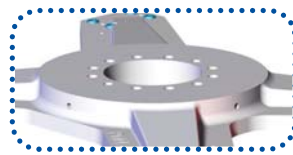
Mid Mount Anchor
40 x 40mm M.P.
50mm Offset

Model
STS0013-BM2



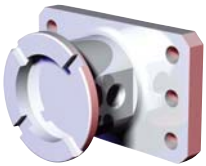
Accessory Plate for Heavy Duty Mid Mount

(A)	Pattern	Model
EPM-01	Standard	CPI-BM2-EPM-01
EPM-BLK	Blank	CPI-BM2-EPM-BLK



For Standard Robot Interface Mounting Patterns and Accessory Plate, Add to end of Model as shown below.
Ex: **RM4-ST5-R01-EPM-01**
(See Bodybuilder Section for mounting Patterns)

Anchors, Collar and Key Assemblies, and Tether Assemblies



Base Anchor
Engineered Breakaway
80 x 40mm M.P.
50mm Face Offset

Model
STS0016-NA



Key & Collar Assembly

Model
STCCLRX-NA



Collar Assembly

Model
STCCLR2-NA



X-Kex Assembly

Model
STCXKEY-NA



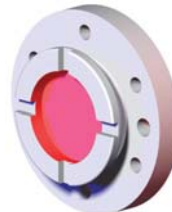
HD Anchor Mount
(3) Hole, Ø190mm M.P.
50mm Face Offset

Model
STP0001-NA



25mm Anchor Mount
(6) Hole, Ø70mm M.P.
25mm Face Offset

Model
STS0025-NA



25mm Anchor Mount
Engineered Breakaway
(6) Hole, Ø70mm M.P.
25mm Face Offset

Model
STS0025-NA-BA-1500



Tether Assembly

Length	Model
9.00"	STS-TETHER-09
16.00"	STS-TETHER-16

SpiderGrip Precision Tooling System
Booms and Boom Spacers

350
300
250
200
150
100
075
050

“L” = length (± 0.02) in [mm] **Ex: STB0200-NA = 200mm Length**

$\text{\O}60\text{mm}$ Boom
Model
STB0(L)-NA

25mm Boom Spacer
Non-Breakaway
Model
STB0025-NA

25mm Boom Spacer
Engineered Breakaway
Model
STB0025-NA-800

Junction and Single End Extension Components

2-Face 45° Corner
Model
STN0C45-NA

2-Face 90° Corner
Model
STN0C90-NA

3-Face 90° Corner
Model
STN0C3F-NA

4-Face 90° Corner
Model
STN0C4F-NA

3-Face Transition
Model
STN0T3F-NA

4-Face Transition
Model
STN0T4F-NA

5-Face Transition
Model
STN0T5F-NA

Offset	Model
100mm	STV0100-NA
200mm	STV0200-NA

Edge Components

90° Mount with
15mm Center Offset
Model
STS0010-NA

“25mm”
“50mm”
90° Mount with
Center Offset

Offset	Model
25mm	STS0011-NA
50mm	STS0012-NA

Offset Mount with
40 x 40mm M.P.
 $\text{\O}8\text{mm}$ (4off)
25mm Face Offset
Model
STS0014-NA

Inline Mount with
80 x 40mm M.P.
 $\text{\O}8\text{mm}$ (4off)
50mm Face Offset
Model
STS0019-NA

**ALGERIA**

SOUDETOLE S a r l
Tel: +213 24 880319
e-mail: loubriki@hotmail.com

AUSTRIA

HUB Herzig Unternehmensberatung
Tel: +49 89 3105692
e-mail: utreu@destaco.com

BELARUS

IOOO RIVAL SVARKA
Tel: +375 17 385 15 75
e-mail:
wojciech.wierzba@rywal.com.pl

BOSNIA & HERZEGOVINA

See Halder d.o.o., Slovenia

BULGARIA

Kammarton Bulgaria Ltd.
Tel: +359 2 9360040
e-mail:
borislava.tasseva@kammarton.com

CROATIA

See Halder d.o.o., Slovenia

CZECK REPUBLIC

PROEXPO plus, s.r.o.
Tel: +42 0 317 7 01 102
e-mail: jstepan@proexpoplus.cz

EXACTEC

systémy a komponenty pro
automatizaci
Tel: +42 485 151 447
e-mail: info@exactec.com

DENMARK

Pneumatics ApS (Workholding)
Tel: +45 86 453 453
e-mail: mail@pneumatics.dk

Norm-Teknik as (Automation)
Tel: +45 74560100
e-mail: nt@norm-teknik.dk

EGYPT

Integrated Equipment Company
Tel: +20 22 70 09 61
e-mail: ieco@link.net

ESTONIA

See Rywal RHC, Poland

FINLAND

Teräskonttori Oy
Tel: +358 9 615 471
e-mail: info@teraskonttori.fi

FRANCE

Fenwick S.A.
Tel: +33 1 40 10 67 00
e-mail: cpittioni@fenwick.fr

GREECE

MEK Maria Koutseris & Co.
Tel: +30 210 52 20 557-559
e-mail: info@mek.com.gr

HUNGARY

Kiraly Trading Hungary GmbH
Tel: +36 13 07 38 00
e-mail: kiraly@kiralytrading.hu

ITALY

IBD srl
Tel: +39 011 95 88 776
e-mail: rpizzonia@ibdonline.org

LITHUANIA

UAB "Rywal LT"
Tel: +37 37 473235
e-mail:
wojciech.wierzba@rywal.com.pl

MACEDONIA

See Halder d.o.o., Slovenia

MOLDOVA

See SC Parcon SRL, Romania

MONTENEGRO

See Halder d.o.o., Slovenia

NORWAY

Bergsli Hantek A.S.
Tel: +47 35 50 35 00
e-mail: kran.handtering@bergsli.no

POLAND

Cloos Polska Sp.zo.o.
Tel: +48 74 851 86 -60 or -76
e-mail: t.jastrzebski@cloos.pl

Festo Polska Sp. Zo.o.
Tel: +48 22 72 04 166
e-mail:
Ireneusz_Gwizdkowski@festo.com

Rywal RHC
Tel: +48 56 66 93 821 or 800
e-mail:
wojciech.wierzba@rywal.com.pl

API Automatyka-Pneumatyka-
Informatyka
Tel: +33 81 22 070
e-mail: zp@api.bielsko.pl

Radius Radpol (Ferguson)
Tel: +48 22 72 04 166
e-mail: info@radius-radpol.com.pl

PORTUGAL

See DE-STA-CO, Spain (Back Cover)

ROMANIA

SC Parcon SRL
Tel: +40 265 253 088
e-mail: comert@parcon.ro

RUSSIA

OOO "Festo.RF"
Tel: +7 495 737 3400
e-mail: festo@festo.ru

See Rywal RHC, Poland

SWEDEN

DE-STA-CO Svenska AB
Tel: +46 31 691510
e-mail: andreas.brandt@destaco.se

FESTO AB
Tel: +46 406 990 684
e-mail: leif.lindahl@festo.se

Jens S. Transmissioner AB (Ferguson)
Tel: +46 11 1980 00
e-mail: stefan.jonsson@jens-s.se

SERBIA

See Halder d.o.o., Slovenia

SLOVAK REPUBLIC

Kjellberg Slovensko s.r.o.
Tel: +421 43 4221 544
e-mail: licko@kjellberg.sk

SLOVENIA

Halder d.o.o.
Tel: +38 62 61 82 646
e-mail: danilo.zgrabic@halder.si

SOUTH AFRICA

Festo (Pty) Ltd.
Tel: +27 41 453 2087/8
e-mail: charles_hulme@festo.com

SWITZERLAND

DE-STA-CO AG
Tel: +41 71 89 16 644
e-mail: ady@destaco.ch

TURKEY

DSC Mekatronik LTD. STI
Tel: +90 224 443 4680-81
e-mail: info@dsc.com.tr

UKRAINE

See Rywal RHC, Poland



A DOVER COMPANY

PRECISELY POSITIONING OUR CUSTOMERS FOR PRODUCTIVITY.

Workholding

- Widest variety of workholding products
- High durability and reliability
- Flexible solutions for all applications
- Custom products for unique requirements

Automation

- Broad range of engineered automation products
- Complementary products for modular integration
- Unmatched accuracy, reliability and performance
- Unparalleled global sales, service and engineering support

DE-STA-CO GLOBAL LOCATIONS

EUROPE

Germany
Tel: +49-6171-705-0
Customer Service: europe@destaco.com

France
Tel: +33-1-3996-5000
Customer Service: france@destaco.com

UK
Tel: +44-1902-797980
Customer Service: uk@destaco.com

Spain
Tel: +34-936361680
Customer Service: spain@destaco.com

BENELUX
Tel: +31-297285332
Customer Service: benelux@destaco.com

ASIA

Thailand
Tel: +66-2-326-0812
Customer Service: info@destaco.com

China
Tel: +86-21-60812888
Customer Service: china@destaco.com

India
Tel: +91-80-41123421-426
Customer Service: india@destaco.com

NORTH AMERICA

DE-STA-CO Headquarters
Auburn Hills, Michigan
Tel: 1.248.836.6700
Toll Free: 1.888.DESTACO
Marketing: marketing@destaco.com
Customer Service: customerservice@destaco.com

Charlevoix, Michigan
Tel: 1.888.DESTACO
Customer Service: customerservice@destaco.com

Wheeling, Illinois
Tel: 1.800.645.5207
Customer Service: camco@destaco.com

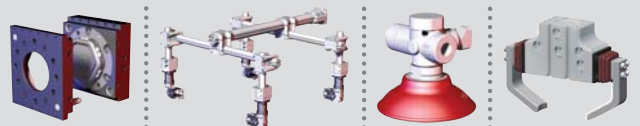
Red Wing, MN (Central Research Laboratories)
Tel: 651.385.2142
Customer Service: sales@centres.com

SOUTH AMERICA

Brazil
Tel: 0800-124070
Customer Service: samerica@destaco.com

To find a representative in your area,
Please visit our website

www.destaco.com



Precisely positioning our customers for productivity.