



Vacuum Products - Standard Vacuum Cups
Durometers and Mounts

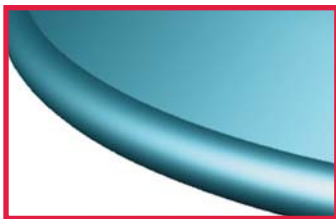


US Patents# 7,309,089 - 7,712,807

DE-STA-CO Vacuum Cups are offered in different families, and may be offered in different durometers. Vacuum cups are also offered in Imperial and Metric mounting options which may vary according to the size and type of the vacuum cup.

Vacuum cups can be ordered as follows:
CPI-**"MODEL"**-**"M**ounting"-**"DuR**ometer"

Vacuum Cup Durometers ("**DR**") (Color equals Durometer (Shore A Scale))



30

This soft durometer is useful for dryer, contoured panels. However, this durometer has less life.



45

This medium hard durometer will seal and adapt to contours well and is good for all around usage. This durometer has a longer life than the 30 durometer.



60

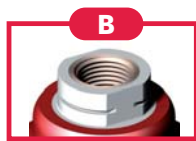
This hard durometer is helpful for extremely oily panels and flat surfaces such as a destacker operation. Vacuum cups of this durometer will have the longest life span.

~~DR~~ = Durometer not available in cup style.

Imperial Vacuum Cup Mounting Options (**M**)



1/4" NPT



3/8" NPT



1.25" SQUARE



1/2" NPT



1/8" NPT MALE

Metric Vacuum Cup Mounting Options (**M**)



1/4" G



3/8" G



1.25" SQUARE

Specialty Vacuum Cup Mounting Options (**M**)



M10 MALE



M8 FEMALE



QUICK DISCONNECT



SMOOTH BORE

M-**CUP** = Mount **only** available in this cup size.

~~**M**-**CUP**~~ = Mount **not** available in this cup size.

Vacuum Products - Standard Vacuum Cups

Destacker Stress Relieving Vacuum Cups



US Patents #7,309,089
7,712,807

(DR) = Durometer
 60

Imperial
 Ø3.00" CPI-30DC-(M)-60
 Ø4.00" CPI-40DC-(M)-60

.....(M) = Mounts Available.....

K B C D E1

Metric
 Ø75mm CPI-75DC-(M)-60
 Ø100mm CPI-100DC-(M)-60

.....(M) = Mounts Available.....

A B C

Round Traction Vacuum Cups



(DR) = Durometer
 45 60

Imperial
 Ø3.50" CPI-35TC-(M)-(DR)
 Ø4.50" CPI-45TC-(M)-(DR)
 Ø5.50" CPI-55TC-(M)-(DR)

.....(M) = Mounts Available.....

K B C D E1

Metric
 Ø90mm CPI-90HT-(M)-(DR)
 Ø115mm CPI-115HT-(M)-(DR)
 Ø140mm CPI-140HT-(M)-(DR)

.....(M) = Mounts Available.....

A B C

Round Belcup Vacuum Cups



(DR) = Durometer
 45 60

Imperial
 Ø1.50" CPI-15AC-(M)-(DR)
 Ø2.00" CPI-20AC-(M)-(DR)
 Ø3.00" CPI-30AC-(M)-(DR)
 Ø4.00" CPI-40AC-(M)-(DR)
 Ø5.00" CPI-50AC-(M)-(DR)

.....(M) = Mounts Available.....

K B C D ~~T5AC~~ ~~T2AC~~ ~~E1~~ ~~T3AC~~ **M8F** **20AC**

Metric
 Ø40mm CPI-40BT-(M)-(DR)
 Ø50mm CPI-50BT-(M)-(DR)
 Ø75mm CPI-75BT-(M)-(DR)
 Ø100mm CPI-100BT-(M)-(DR)
 Ø125mm CPI-125BT-(M)-(DR)

.....(M) = Mounts Available.....

A B C M10

Oval Deepdish Vacuum Cups



(DR) = Durometer
 45

Imperial
 1.00" x 5.00" CPI-15DD-(M)-45
 3.00" x 6.00" CPI-36DD-(M)-45

.....(M) = Mounts Available.....

K ~~T5DD~~ **B C U18** ~~36DD~~

Metric
 25 x 125mm CPI-25-125DM-(M)-45
 75 x 150mm CPI-75-150DM-(M)-45

.....(M) = Mounts Available.....

A ~~25-125DM~~ **B C U18** ~~75-150DM~~



Vacuum Products - Standard Vacuum Cups
 Round Flatfoot Vacuum Cups

Imperial

- Ø2.00" CPI-20FF-(M)-(DR)
- Ø3.00" CPI-30FF-(M)-(DR)
- Ø4.00" CPI-40FF-(M)-(DR)
- Ø5.00" CPI-50FF-(M)-(DR)

(M) = Mounts Available

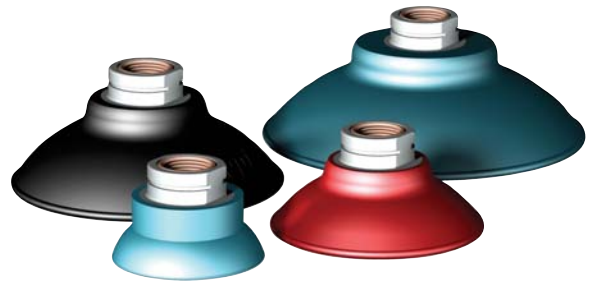
- K B C D** ~~40FF~~ ~~50FF~~ **E1**

Metric

- Ø50mm CPI-50PF-(M)-(DR)
- Ø75mm CPI-75PF-(M)-(DR)
- Ø100mm CPI-100PF-(M)-(DR)
- Ø125mm CPI-125PF-(M)-(DR)

(M) = Mounts Available

- A B C**



(DR) = Durometer

- 30 45 60**

CC Series Round Flatfoot Vacuum Cups

- Ø1.25" CPI-10CC-U18-60



Imperial

- Ø2.00" CPI-20DD-(M)-(DR)
- Ø3.00" CPI-30DD-(M)-(DR)
- Ø4.00" CPI-40DD-(M)-(DR)

(M) = Mounts Available

- K B C**

Metric

- Ø50mm CPI-50DM-(M)-(DR)
- Ø75mm CPI-75DM-(M)-(DR)
- Ø100mm CPI-100DM-(M)-(DR)

(M) = Mounts Available

- A B C**

Round Deepdish Vacuum Cups



(DR) = Durometer

- 30 45** ~~60~~

Imperial

- 1.50" x 3.00" CPI-153FF-(M)-(DR)
- 2.00" x 4.00" CPI-24FF-(M)-(DR)
- 2.50" x 5.00" CPI-255FF-(M)-(DR)
- 3.00" x 6.00" CPI-36FF-(M)-(DR)

(M) = Mounts Available

- K B C D** ~~24FF~~ ~~E1~~ ~~24FF~~

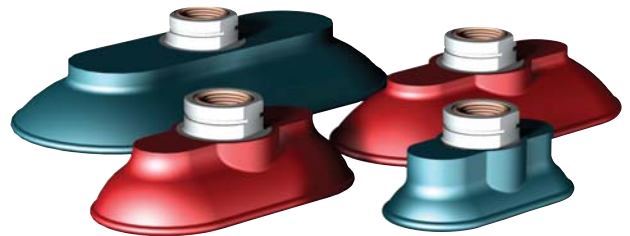
Metric

- 40 x 75mm CPI-40-75PF-(M)-(DR)
- 50 x 100mm CPI-50-100PF-(M)-(DR)
- 63 x 125mm CPI-63-125PF-(M)-(DR)
- 75 x 150mm CPI-75-150PF-(M)-(DR)

(M) = Mounts Available

- A B C** ~~63-125PF~~

Oval Flatfoot Vacuum Cups



(DR) = Durometer

- 30 45** ~~60~~

Vacuum Products

Best Vacuum Cup for the Job

Vacuum Cup Family

DESTACKER APPLICATION	FLAT CONTOURS	MILD CONTOURS	HIGH CONTOURS	SLICK/OILY SURFACES	DRY SURFACES	Application Direction
-----------------------	---------------	---------------	---------------	---------------------	--------------	-----------------------

US Patents #7,309,089
7,712,807



Destacker Vacuum Cups

5	5	N/A	N/A	3	5	VERTICAL
N/A	N/A	N/A	N/A	N/A	N/A	HORIZONTAL



Round Traction Vacuum Cups

4	5	4	2	5	5	VERTICAL
N/A	5	3	1	5	5	HORIZONTAL



Round Flatfoot Vacuum Cups

4	4	5	3	4	4	VERTICAL
N/A	4	5	3	4	4	HORIZONTAL



Round Belcup Vacuum Cups

4	5	4	2	3	4	VERTICAL
N/A	3	3	1	2	4	HORIZONTAL



Round Deepdish Vacuum Cups

1	1	3	5	3	3	VERTICAL
N/A	1	3	5	3	3	HORIZONTAL



Oval Deepdish Vacuum Cups

1	3	4	2	4	3	VERTICAL
N/A	3	4	2	3	3	HORIZONTAL



Oval Flatfoot Vacuum Cups

3	4	3	1	4	4	VERTICAL
N/A	4	3	1	3	4	HORIZONTAL

Worst Cup for the Job **1** **2** **3** **4** **5** Best Cup for the Job **N/A** Not Advised for the application

This chart is a guide to aid in selecting the right family of cup for general surfaces, contours, and applications.



Vacuum Products - Micro Vacuum Cups

Flat Micro Vacuum Cups

Metric

Ø15mm	VC-F15(M)-(T)
Ø20mm	VC-F20(M)-(T)
Ø30mm	VC-F30(M)-(T)
Ø40mm	VC-F40(M)-(T)
Ø50mm	VC-F50(M)-(T)

(T) = Thread

10M 18M 18F

Only Available in Ø15 and Ø20mm

(M) = Material

V **Viton** Hi-Temp applications where silicon is not allowed
Not Available in Ø15 and Ø20mm



S **Silicon** Extremely hot or cold environments

N **Nitrile** General Purpose

Metric

Ø05mm	VC-B05(M)-(T)
Ø10mm	VC-B10(M)-(T)
Ø15mm	VC-B15(M)-(T)
Ø20mm	VC-B20(M)-(T)
Ø30mm	VC-B30(M)-(T)
Ø40mm	VC-B40(M)-(T)
Ø50mm	VC-B50(M)-(T)

(T) = Thread

10M 18M 18F

Only Available in Ø5, Ø10, Ø15, Ø20mm

(M) = Material

V **Viton** Hi-Temp applications where silicon is not allowed



S **Silicon** Extremely hot or cold environments

N **Nitrile** General Purpose

Metric

Ø20mm	VC-BM20(M)-(T)
Ø30mm	VC-BM30(M)-(T)
Ø40mm	VC-BM40(M)-(T)
Ø50mm	VC-BM50(M)-(T)

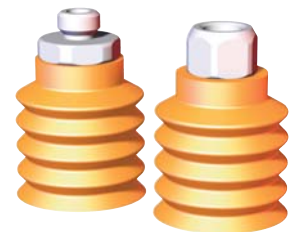
(T) = Thread

10M 18M 18F

Only Available in Ø20mm

(M) = Material

~~V~~ **Viton** Hi-Temp applications where silicon is not allowed



S **Silicon** Extremely hot or cold environments

N **Nitrile** General Purpose

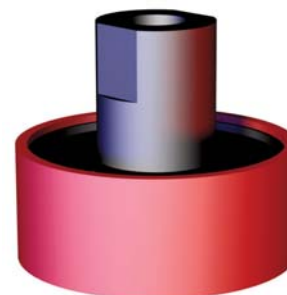
Multi-Bellows Micro Vacuum Cups

Mag-Lift Part Lifting Magnets



Ø1.50" Magnet Complete Assembly
CPI-TPLP15RB

Ø1.50" Magnet Pad Only
RB15-CPI



Ø1.50" Magnet Complete Assembly
CPI-TPLP50373

Ø1.50" Magnet Pad Only
RB30-CPI

Vacuum Products - Venturi Style Vacuum Generator/Cup Mounts

ARV Auto Release Venturi (Standard Flow, Aluminum)



Left Hand Apple Core
CPI-VSA-ARVL-750-(X)



Right Hand Apple Core
CPI-VSA-ARVR-750-(X)



Without Apple Core
CPI-VSA-ARVR-000-(X)



RH/LH Spherical Ball
CPI-VSA-ARV(R/L)-B112-(X)

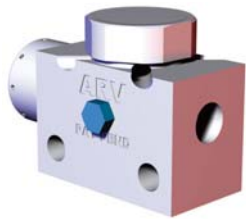


(X) = Mounting Thread
U38 = 3/8" NPT Male
G38 = 3/8" G Male

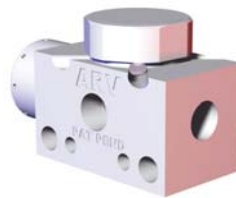


Vacuum Sensor Option
Add "-VS" to end of "ARV"
order code

ARV Auto Release Venturi Block Style for Remote Mounting



Block Style
CPI-VSA-ARVR-312-(X)
(X) = Vacuum Port Thread
U38 = 3/8" NPT Female
G38 = 3/8" G Female



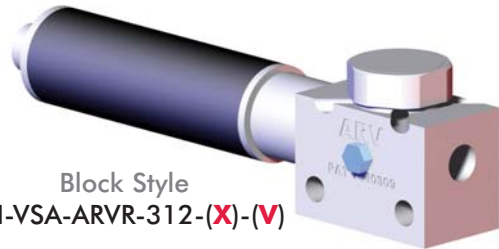
SCARA Block Style
CPI-VSA-ARVS-5-U18
Also compatible with

**Robohand
DIRECTCONNECT**

Multi-Flow ARV Auto Release Venturi (Available in all Mounting Styles)



Right Hand Apple Core
CPI-VSA-ARVR-750-(X)-(V)



Block Style
CPI-VSA-ARVR-312-(X)-(V)



(X) = Mounting Thread
U38 = 3/8" NPT Male
G38 = 3/8" G Male

(V) = Vacuum Flow Option
MF = Medium Flow
HF = High Flow



Vacuum Sensor Option
Add "-VS" to end of "ARV"
order code

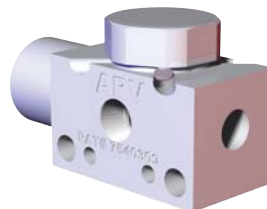
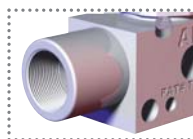
Standard Cartridge	Medium-flow Cartridge	High-flow Cartridge
<p>(1.00 s.c.f.m @ 60 psi)</p>	<p>(2.80 s.c.f.m @ 60 psi)</p>	<p>(4.20 s.c.f.m @ 60 psi)</p>
<p>Smooth Plastic Glass Smooth Metal Fiberglass (Non-porous products)</p>	<p>High-Density Cardboard Plastic Bags Textured Metal Smooth Wood Drywall</p>	<p>Paper Medium-Density Cardboard Wood Styrofoam High-Density Cloth Textured Plastic</p>

Stainless Steel ARV Auto Release Venturi

(Ideal for Clean Room Solutions)



US PAT #: 7,540,309 - 7,681,603



Stainless Steel Block Style
CPI-VSA-ARVS-5-U18-SS
Also compatible with

**Robohand
DIRECTCONNECT**



Vacuum Products - Venturi Style Vacuum Generator/Cup Mounts
 Low Profile **750/19 Series** with Blow-off



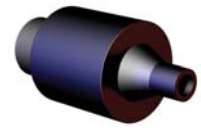
Low-Profile **750/19** with Blow-off (No Options)
CPI-VSA-(X)-BO-LP



Low-Profile **750/19** with Blow-off and Detector Port
CPI-VSA-(X)-BO-LP-DET



Low-Profile **750/19** with Blow-off and Switch Port
CPI-VSA-(X)-BO-LP-VS



Silencer Option
 Add "**-ST2**" to end of order code

Standard **750/19 Series** with Blow-off



Standard **750/19** with Blow-off (No Options)
CPI-VSA-(X)-BO



Standard **750/19** with Blow-off and Detector Port
CPI-VSA-(X)-BO-DET



Standard **750/19** with Blow-off and Switch Port
CPI-VSA-(X)-BO-VS

750/19 Series without Blow-off (Barrel Style)



750/19 (Barrel Style) with No Options
CPI-VSA-(X)



750/19 (Barrel Style) with Detector Port
CPI-VSA-(X)-DET



750/19 (Barrel Style) with Switch Port
CPI-VSA-(X)-VS



Silencer Option
 Add "**-ST2**" to end of order code

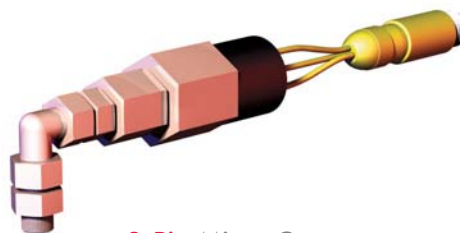
750/19 Series with blow-off (Low-Profile and Standard)

(X)	Std Mount Thread	Vacuum (Air-in) Port	Standard "Blow off" OPTION	DET/VS thread
19	3/8" G Male	1/4" G	1/8" G	DET = M5
750	3/8" NPT Male	1/4" NPT	1/8" NPT	VS = 1/8 NPT

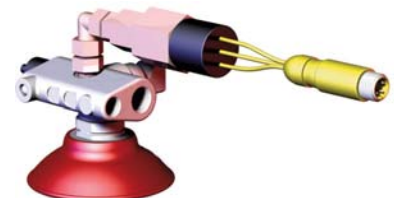
Micro Connector Vacuum Switches



4-Pin Euro Micro Connector Vacuum Switch
CPI-VS-VM-2C-18



3-Pin Micro Connector Vacuum Switch
CPI-VS-VM17-3MC-G18B



Low-Profile **750 Series** Venturi with Blow-off, Vacuum Switch and Silencer as shown above
CPI-VSA-750-BO-LP-VSS-ST2

Vacuum Products - Venturi Style Vacuum Generator Cup Mounts
 Low-Profile **000 Series** with Blow-off for Mounting to Spring-Loaded Products



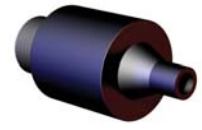
Low-Profile **000** with Blow-off (No Options)
 CPI-VSA-**000-BO-LP-(X)***



Low-Profile **000** with Blow-off and Detector Port
 CPI-VSA-**000-BO-LP-(X)*-DET**



Low-Profile **000** with Blow-off with Switch Port
 CPI-VSA-**000-BO-LP-(X)*-VS**



Silencer Option
 Add "**-ST2**" to end of order code

Standard **000 Series** with Blow-off for Mounting to Spring-Loaded Products



Standard **000** with Blow-off (No Options)
 CPI-VSA-**000-BO-(X)***



Standard **000** with Blow-off and Detector Port
 CPI-VSA-**000-BO-(X)*-DET**



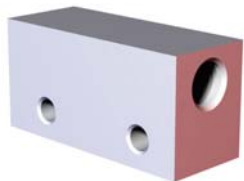
Standard **000** with Blow-off and Switch Port
 CPI-VSA-**000-BO-(X)*-VS**

000 Series with blow-off (Low-Profile and Standard)

(X)*	Std/Opt	Mount Thread	Vacuum (Air-in) Port
Omit*	Standard	3/8" NPT Male	1/4" NPT
G38	Optional	3/8" G Male	1/4" G
U14	Optional	1/4" NPT Male	1/4" NPT
G14	Optional	1/4" G Male	1/4" G

DET/VS thread
DET = M5
VS = 1/8 NPT

6/8/312 Series Block Style Venturi for Remote Mounting



6/8/312 Block Style (for Remote Mounting)
 CPI-VSA-**(X)**



8/312 Block Style with Blow-off (No Options) (for Remote Mounting)
 CPI-VSA-**(X)-BO**

6/8/312 Series Block Style

(X)	Mount Thread	Vacuum Port	Remote Mounting
6	1/8" NPT Female	1/8" NPT	M6 X 1.0
8	3/8" G Female	1/4" G	M8 X 1.25
312	3/8" NPT Female	1/4" NPT	M8 X 1.25



Silencer Option
 Add "**-ST2**" to end of order code
 Not available on **(-BO)** Blow-off Version



Vacuum Products - Port Only Adaptor and Micro Cup Mounts
750/19 Series Apple Core Port Adaptor

750/19 Series
 Port Only Adaptor
 CPI-PA-(X)

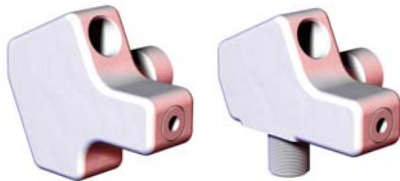


750/19 Series Port Only Adaptor

(X)	Mount Thread	Vacuum Port
19	3/8" G Male	1/4" G
750	3/8" NPT Male	1/4" NPT

500 Series Micro Apple Core Vacuum Generator Cup Mounts

500 Series Micro
 CPI-VSA-500-(A)



F18

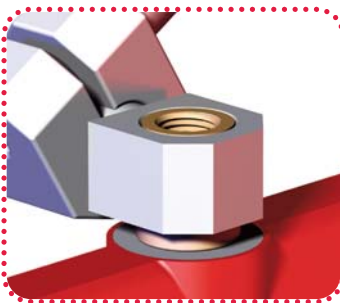
M18

500 Series Micro Venturi Style Vacuum Generator

(A)	Vacuum port to External Mounting Tread
F18	Female 1/8" NPT to Female 1/8" NPT
M18	Female 1/8" NPT to Male 1/8" NPT

500 Series Micro Series Apple Core Port Adaptor

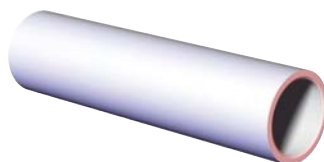
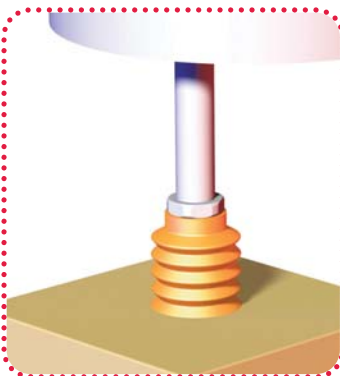
500 Series Micro Port Only Adaptor



500 Series Micro
 Port Only Adaptor
 CPI-PA-500-(A)-(B)

Description	Port (A)	Port (B)
Female 1/8" NPT to Female 1/8" NPT	F18	F18
Female 1/8" G to Female 1/8" G	FG18	FG18
Female M5 to Female M5	FM5	FM5
Female 1/8" NPT to Male 1/8" NPT	F18	M18
Female 1/8" G to Male 1/8" G	FG18	MG18
Female M5 to Male M5	FM5	MM5

1/8 NPT Micro Series Vacuum Extension



Ø0.50"-1/8" Micro Series
 Vacuum Extension
 CPI-PAT-50T-"L"-U18

"L" = Standard Lengths

- 02** = 2.00"
- 03** = 3.00"
- 04** = 4.00"
- 05** = 5.00"
- 06** = 6.00"

Vacuum Products - Spring-Loaded Cup Mounts
Bulk Head Style Micro Series Level Compensators



0.30" Travel
Micro Series
Level Compensator
CPI-LC10

Mounting Tread
G1/8" BSPP

Ports
Vacuum = M5 Female
Mounting = M5 Female



.75" Travel
Micro Series
Level Compensator
CPI-LC18

Mounting Tread
M16 x 1

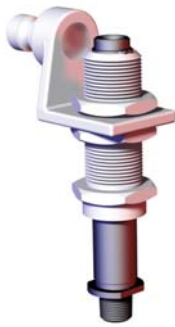
Ports
Vacuum = G1/8" NPS Female
Mounting = G1/8" NPS Male



Micro Series
Level Compensator Mount
CPI-LCM-10-"D"

"D" = (Ø) Diameter
16 = Ø16mm [.63"]
10 = Ø10mm [.39"]

Standard Travel Spring Loaded Cup Mounts



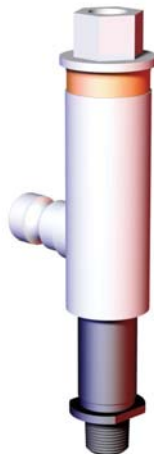
CPI-RCM-150-U14-NR
Shown with CPI-SAP-30

Bulkhead Style Spring-Loaded Cup Mounts

Travel	
0.75" CPI-RCM-30
1.50" CPI-RCM-150-U14-NR
3.00" CPI-RCM-300-U14-NR

RCM Series Bulkhead Style

Version	Mount Thread	Vacuum Port
Imperial	3/8" NPT Female	1/4" NPT



CPI-SCM-150-U14-NR

Apple-Core Style Spring-Loaded Cup Mounts

Imperial Travel	
0.75" CPI-SCM-075-(X)-U14-NR
1.50" CPI-SCM-150-(X)-U14-NR
3.00" CPI-SCM-300-(X)-U14-NR
Metric Travel	
19mm CPI-SCM-19-(X)-U14-NR
40mm CPI-SCM-40-(X)-U14-NR
75mm CPI-SCM-75-(X)-U14-NR

SCM-(19/075)-(X)-NR

(X)	Mount Thread	Vacuum Port	Version
G14	3/8" G	1/4" G	Metric
U14	3/8" NPT	1/4" NPT	Imperial

CPI-SCM-(40/150 & 75/300)-(X)-NR

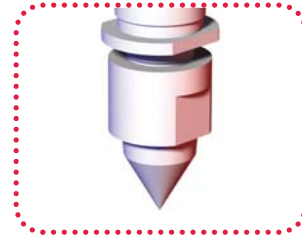
(X)	Mount Thread	Vacuum Port	Version
G14	3/8" G	3/8" G	Metric
U14	3/8" NPT	3/8" NPT	Imperial

Vacuum Products - Spring-Loaded Cup Mounts

ULP - Locating Pins (Only) for Standard Travel Spring-Loaded Cup Mount

Diameter

- Ø .50" CPI-ULP-50-75
- Ø .62" CPI-ULP-62-100
- Ø .75" CPI-ULP-75-112
- Ø 1.00" CPI-ULP-100-125



Locating Pins ordered with Standard Spring-Loaded Cup Mounts - 0.75" Travel

Pin Diameter

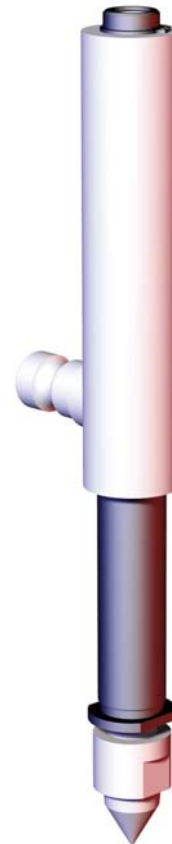
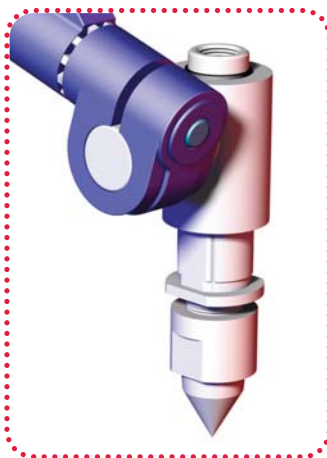
- Ø .50" CPI-SCM-075-50-LP
- Ø .62" CPI-SCM-075-62-LP
- Ø .75" CPI-SCM-075-75-LP
- Ø 1.00" CPI-SCM-075-100-LP



Locating Pins ordered with Standard Spring-Loaded Cup Mounts - 3.00" Travel

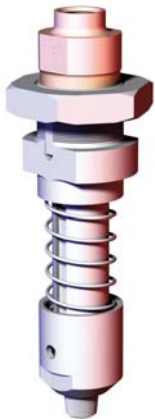
Pin Diameter

- Ø .50" CPI-SCM-300-50-LP
- Ø .62" CPI-SCM-300-62-LP
- Ø .75" CPI-SCM-300-75-LP
- Ø 1.00" CPI-SCM-300-100-LP

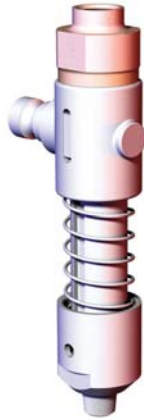


Vacuum Products - Spring-Loaded Cup Mounts

Extended-Travel Spring-Loaded Cup Mounts



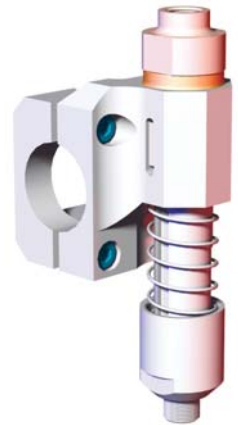
Ø1.25"
Bulkhead Mount
CPI-SCMB-(T)



Ø0.75"
Apple Core Mount
CPI-SCMA-(T)

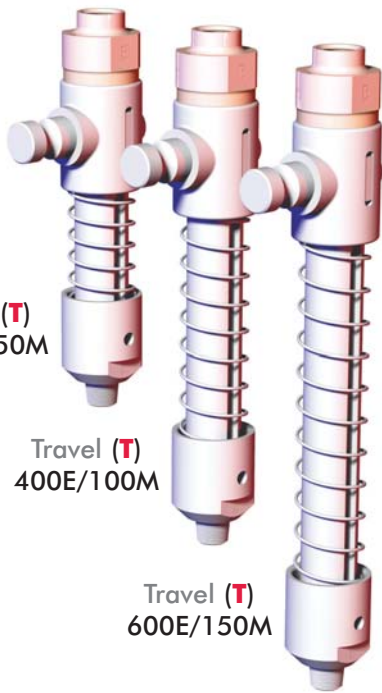


Ø1.00"/25MM
Extension Mount
CPI-SCM10/25-(T)



Ø1.50"/40MM
Tube Mount
CPI-SCMC-(D)-(T)-(O)

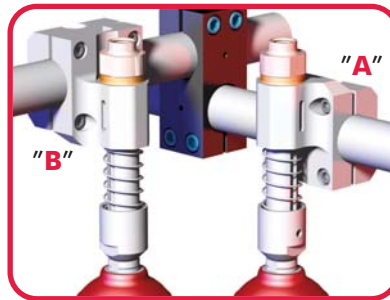
Vertical Travel Length for **SCM(A,B,C,10/25)**



Travel (T)
200E/050M

Travel (T)
400E/100M

Travel (T)
600E/150M

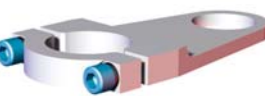
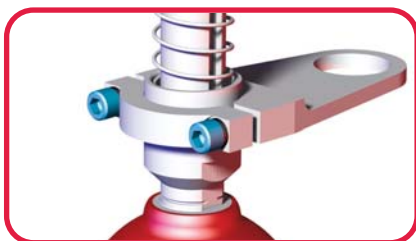


(O) = SMC Mounting Orientation
A = Lowered Position
B = Raised Position

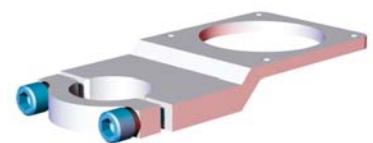
Extended Travel Spring-Loaded Cup Mounts

Version	Travel (T)	Mounting/Vacuum	(D)
Imperial	200E (2.00")	3/8" NPT	150 (Ø1.50")
	400E (4.00")	3/8" NPT	150 (Ø1.50")
	600E (6.00")	3/8" NPT	150 (Ø1.50")
Metric	050M (50mm)	3/8" G	40M (Ø40mm)
	100M (100mm)	3/8" G	40M (Ø40mm)
	150M (150mm)	3/8" G	40M (Ø40mm)

SAP Extended Travel Spring-Loaded Cup Mount Proximity Switch Mounts



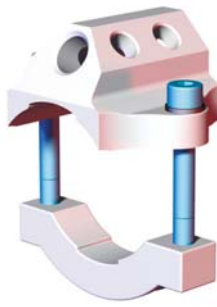
30mm Barrel Style
CPI-SAP-30-PM-150



50mm Square Style
CPI-SAP-NI50-PM-150

Vacuum Products - Manifolds

MLK/MBC Boom Mounted 4 and 8-Port Manifolds



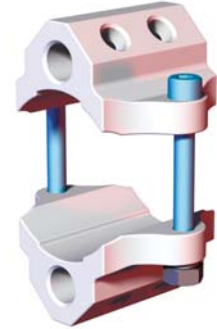
MLK/MBC (Single 4-Port)
with 30° Angled Input Port

Model	Tube (Ø)
CPI-MLK-60-G44-30	60mm
CPI-MBC-250-4-4-30	2.50"(in)



MLK/MBC (Single 4-Port)

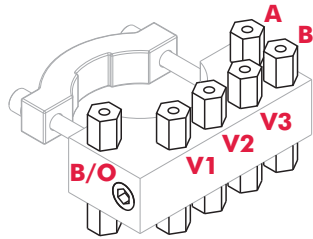
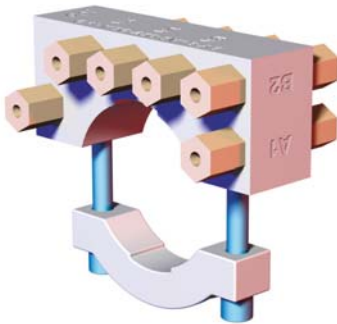
Model	Tube (Ø)
CPI-MLK-40-G44	40mm
CPI-MBC-150-4-4	1.50"(in)
CPI-MLK-60-G44	60mm
CPI-MBC-250-4-4	2.50"(in)



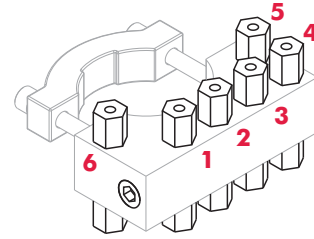
MLK/MBC (Double 8-Port)

Model	Tube (Ø)
CPI-MLK-40-G88	40mm
CPI-MBC-150-8-8	1.50"(in)
CPI-MLK-60-G88	60mm
CPI-MBC-250-8-8	2.50"(in)

MBC Boom Mounted 6-Port Manifolds

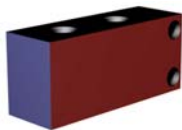


6-Port (with Blow-off)
CPI-MBC-250-3V1B-AB

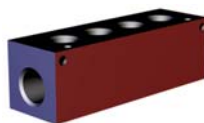


6-Port
CPI-MBC-250-4V2B

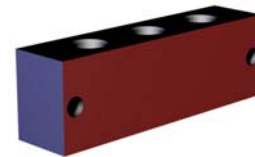
GDA/MMB Block Style Manifolds



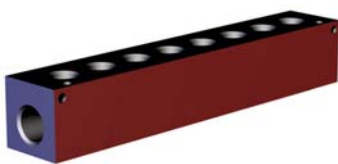
(2) in/(4) Out
CPI-GDA-M24-37327



(1) in/(4) Out
CPI-MMB-4P



(3) in/(6) Out
CPI-MMB-4V2B-LG



(1) in/(8) Out
CPI-MMB-8P



(5) in/(7) Out
CPI-MMB-4V5P-AB



(4) in/(6) Out
CPI-MMB-3V1B-AB